



White Horse Road, E1

£588 Per week

 2  1  2 

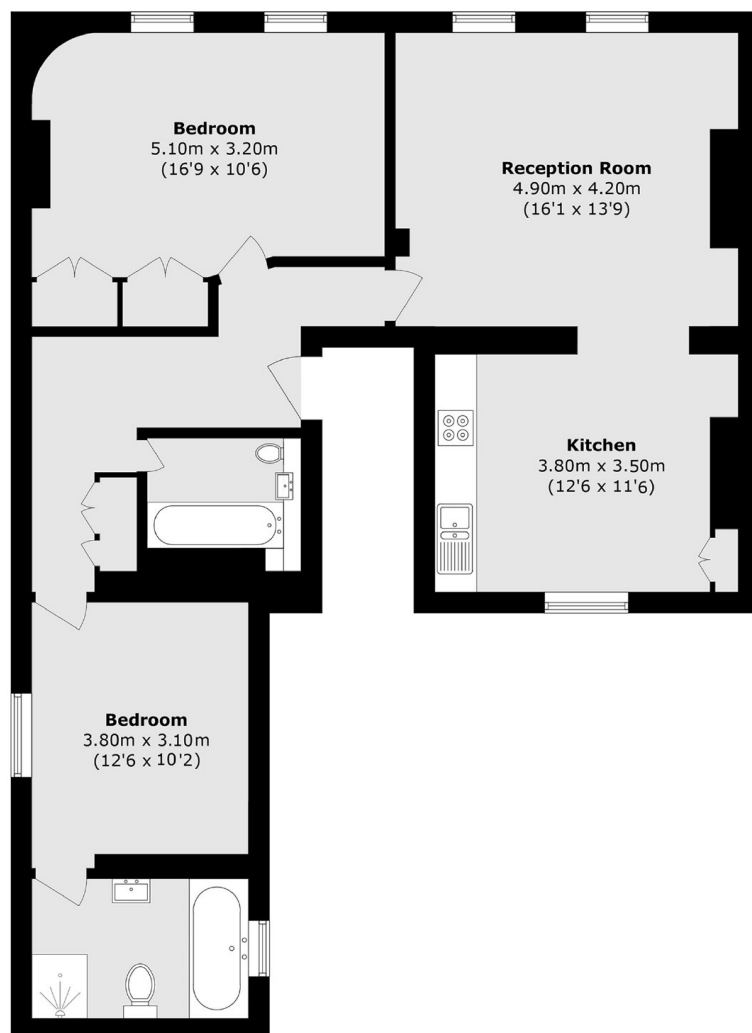
- Modern Two Bedroom
- Large Kitchen diner
- Two Bathrooms
- Recently Refurbished
- Pub Conversion
- Limehouse



Well presented two bedroom apartment on the 1st floor of this stylish pub conversion in Limehouse. This apartment comprises of two double bedrooms, a large and bright reception with an open plan fully fitted kitchen and two modern bathrooms. Wooden flooring throughout.

Ideally located just moment away from Limehouse DLR, Shadwell DLR and Overground stations as well as Stepney Green Underground station (District and Hammersmith & City lines) providing an easy access to the City and Canary Wharf. Close to local park and green spaces, only a few minutes away from Stepney City Farm and his Farmers' Market.





Total area (approx.): 92.4 sq. m (994.5 sq. ft)

35A Wapping High Street,
London, E1W 1NR
020 7702 3456
ea2group.com