



Burnley Road, NW10

TO LET - £3,683 Per Month

AVAILABLE FROM 31ST AUGUST 2022 - We are delighted to offer TO LET this spacious six double bedroom property, spanning 1598 sq ft of well laid out living space that is situated in the heart of Dollis Hill. Offered FURNISHED OR PART FURNISHED.

The generous accommodation comprises of a large bay fronted reception room, a separate fitted kitchen with integrated appliances, six bedrooms with built in wardrobes, two family bathrooms and a bright sunroom. Externally, there is a 43 ft rear garden and off street parking.

Burnley Road is situated in a residential area and well placed for local amenities, schools, and transport links via the Jubilee Line including Dollis Hill (Zone 3) and Willesden Green (Zone 2) stations for great access into Central London. Ideal home for sharers or families.

- AVAILABLE TO LET FROM 31ST AUGUST 2022
- OFFERED FURNISHED OR PART FURNISHED
- Bright sun room & private 43 ft rear garden
- Stunning 86 acre Gladstone Park is within close proximity
- Ideal for a growing family or sharers
- DEPOSIT: £4038 - Council Tax: E



020 7328 2828

rentals@cameronsstiff.co.uk

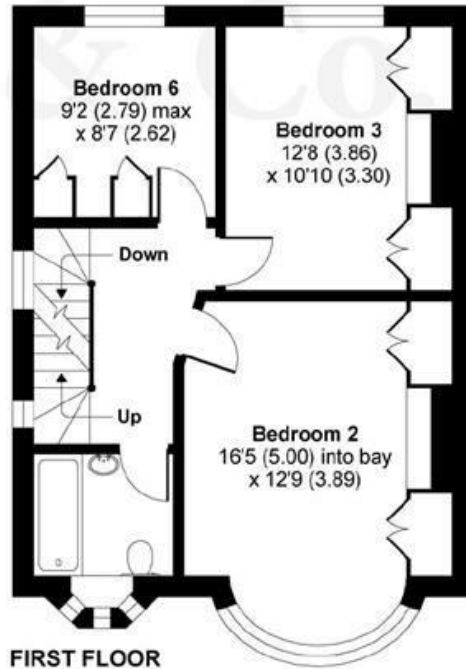
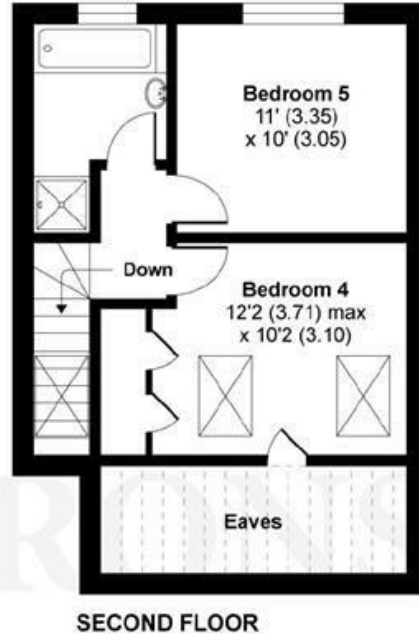
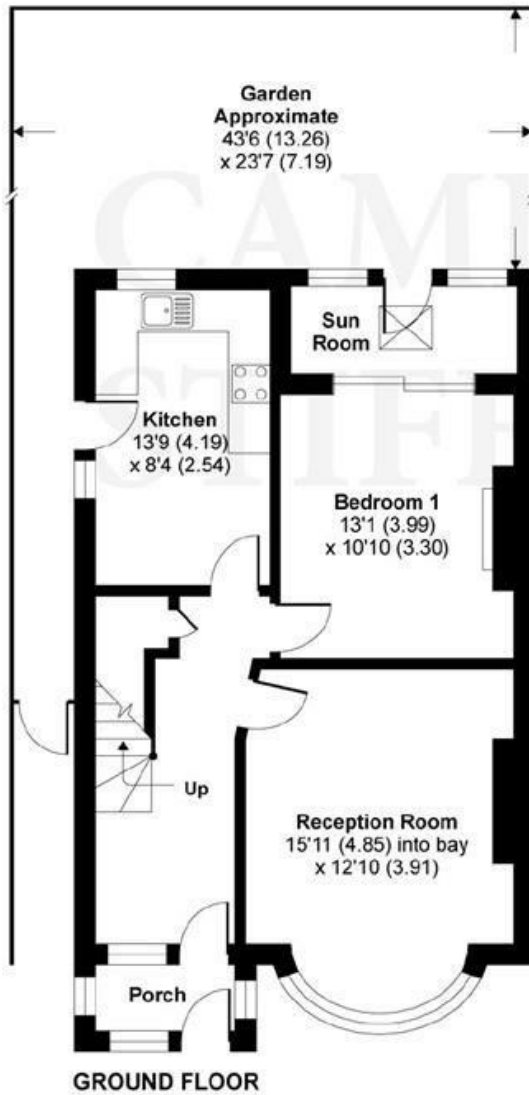
cameronsstiff.co.uk

Burnley Road, London, NW10

APPROX. GROSS INTERNAL FLOOR AREA 1599 SQ FT 148.5 SQ METRES (EXCLUDES RESTRICTED HEAD HEIGHT)



Denotes restricted head height



Whilst every attempt has been made to ensure the accuracy of the floor plan contained here, measurements of doors, windows and rooms are approximate and no responsibility is taken for any error, omission or misstatement. These plans are for representation purposes only as defined by RICS Code of Measuring Practice and should be used as such by any prospective purchaser. Specifically no guarantee is given on the total square footage of the property if quoted on this plan. Any figure given is for initial guidance only and should not be relied on as a basis of valuation.

Copyright nichecom.co.uk 2018 Produced for Camerons Stiff & Co REF : 314140

EPC: D
Ref: 15063055

