



## Pratt Street, NW1

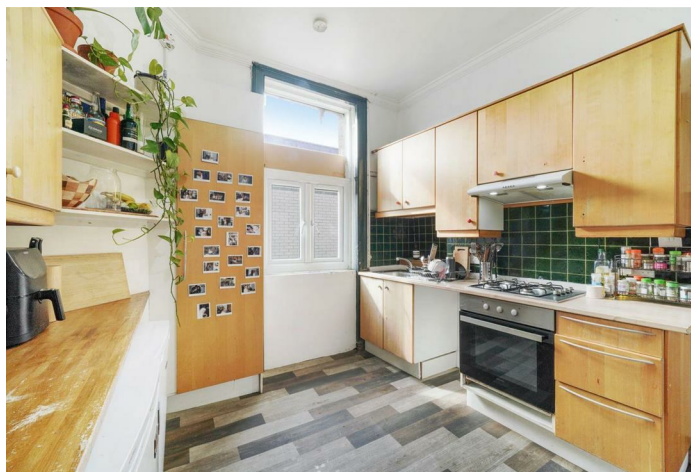
TO LET - £2,600 Per Month

AVAILABLE TO LET 23RD DECEMBER- is this well presented two bedroom duplex apartment situated on Kentish Town Road.

Offering 1006 sq ft of well laid out accommodation, the First Floor offers a spacious reception room with a feature fireplace and a separate fully fitted kitchen. The Second Floor comprises two double bedrooms which are serviced by a family bathroom on the Third Floor.

Located perfectly next door to Camden Town Station (Northern line- Zone 2) with Camden market being a short walk away as well as being within easy reach to Regents Park. Perfect for students or working professionals.

- 2 bedroom duplex apartment
- Offering 1006 sq ft of well laid out accommodation
- Large reception & separate kitchen
- Transport: Camden Town (Northern- Zone 2)
- Deposit: £3,000
- COUNCIL: Camden (D)



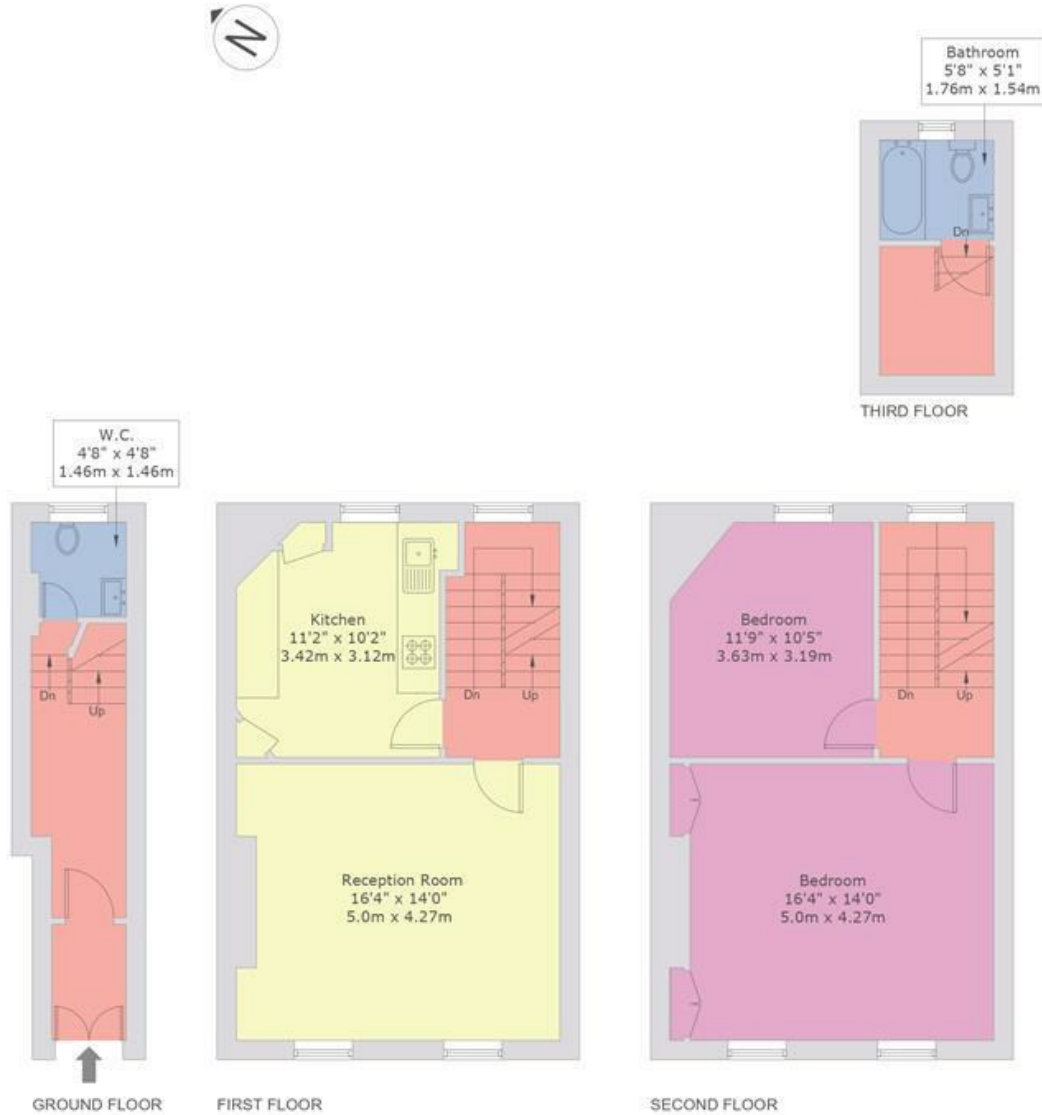
020 8450 9377

[rentals@cameronsstiff.co.uk](mailto:rentals@cameronsstiff.co.uk)

[cameronsstiff.co.uk](http://cameronsstiff.co.uk)

## Pratt Street, NW1

Approx Gross Internal Area = 93.46 sq m / 1006 sq ft  
For identification only - Not to scale



This floor plan is produced in accordance with RICS Property Measurement Standards incorporating International Property Measurement Standards (IPMS2 Residential).  
Produced for Cameron Stiff & Co.  
Copyright © BLEUPLAN

EPC: D  
Ref: 19014552

