

bothams ¹⁸⁷¹



MOOR FOOD 536 Sheffield Road, Chesterfield, S41 8LP

Offers In The Region Of £39,950





MOOR FOOD 536 Sheffield Road

Chesterfield, S41 8LP

BUSINESS FOR SALE

An opportunity to acquire this well-established sandwich shop situated in a prime position off Whittington Moor on the junction of the main Sheffield Road with Avenue Road which has built up an excellent reputation with a large and loyal customer base.

Established business with excellent potential for growth and expansion
Well appointed prime premises close to Lidl supermarket
Fully equipped and stocked to operate immediately

A viewing is essential to appreciate the opportunity and potential on offer.



[Location](#)

[Description](#)

[Business](#)

[Premises](#)

[Rating Assessment](#)

[Viewing](#)





Directions





OPEN
Welcome
ANGEL SPA
07932 905975

MILLENNIUM
HOMECARE
TELEPHONE: 01246 26389

MOORZ
FOOD

MOORZ FOOD

01246 456707

MOORZ
FOOD
01246 456707

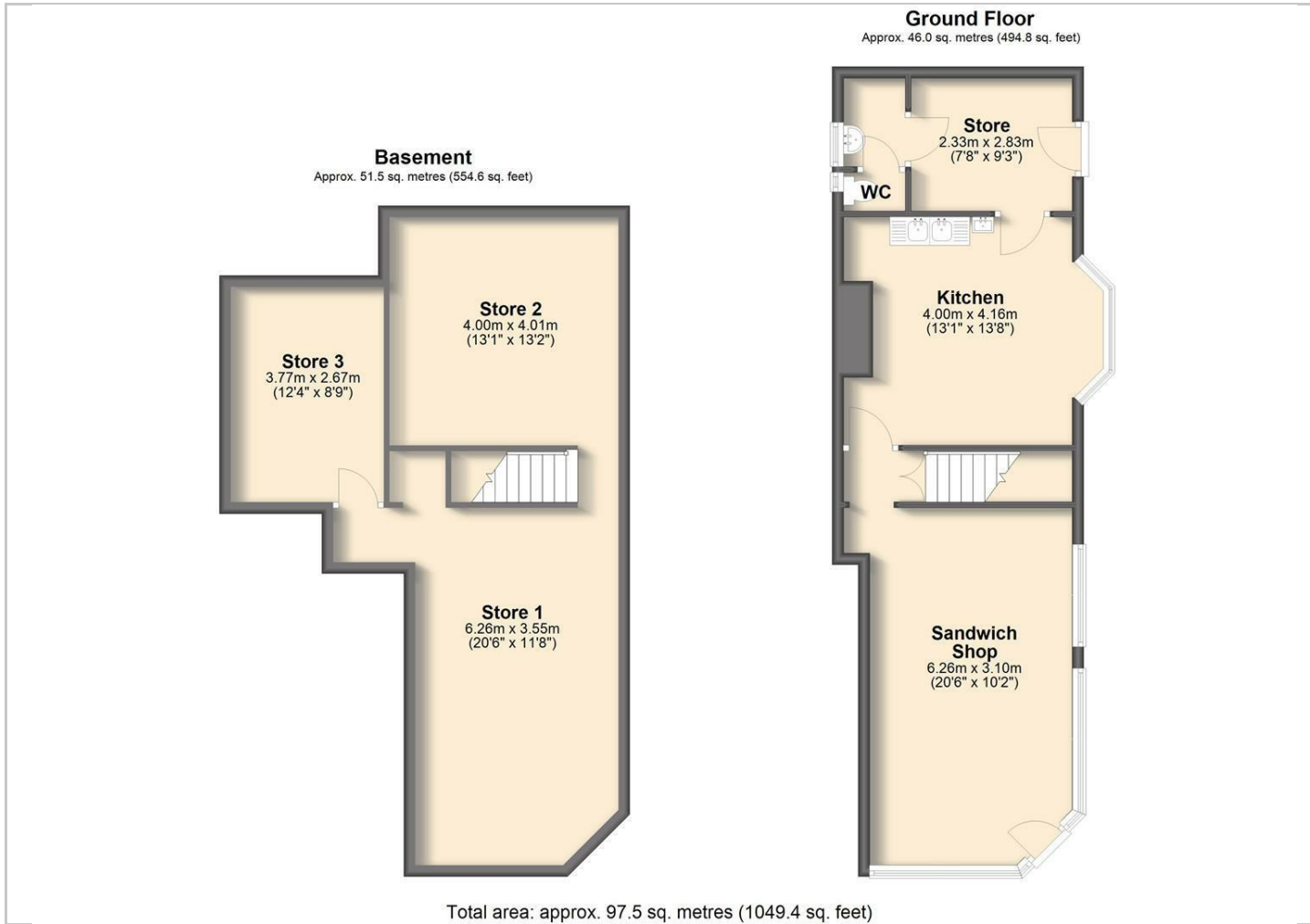
JUST EAT

OPEN

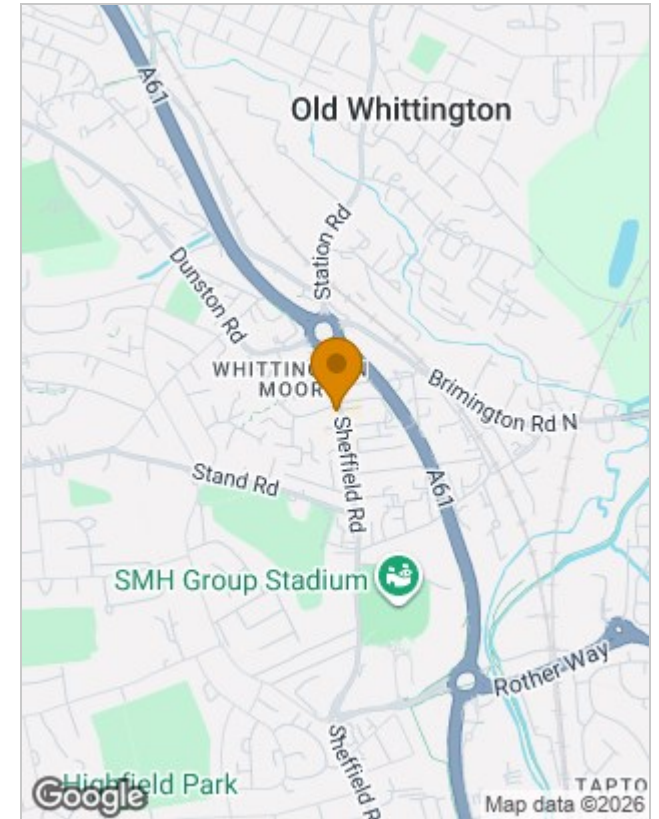
AVENUE ROAD



Floor Plans



Location Map



Energy Performance Graph

Energy Efficiency Rating		
	Current	Potential
Very energy efficient - lower running costs		
(92 plus) A		
(81-91) B		
(69-80) C		
(55-68) D		
(39-54) E		
(21-38) F		
(1-20) G		
Not energy efficient - higher running costs		
England & Wales	EU Directive 2002/91/EC	

Viewing

Please contact our Chesterfield Commercial Office on 01246 233121 if you wish to arrange a viewing appointment for this property or require further information.

The particulars are set out as a general outline only for the guidance of intended purchasers or lessees, and do not constitute, any part of a contract. Nothing in these particulars shall be deemed to be a statement that the property is in good structural condition or otherwise nor that any of the services, appliances, equipment or facilities are in good working order. Purchasers should satisfy themselves of this prior to purchasing.