





72 Glamorgan Street

Barry, Barry

Immaculate two bedroom mid-terrace located in Barry's West End. Open plan living/dining, modern kitchen, stylish four piece bathroom, enclosed front and rear gardens, Whitmore High School catchment. Ideal for small families, first time buyers and investors alike!

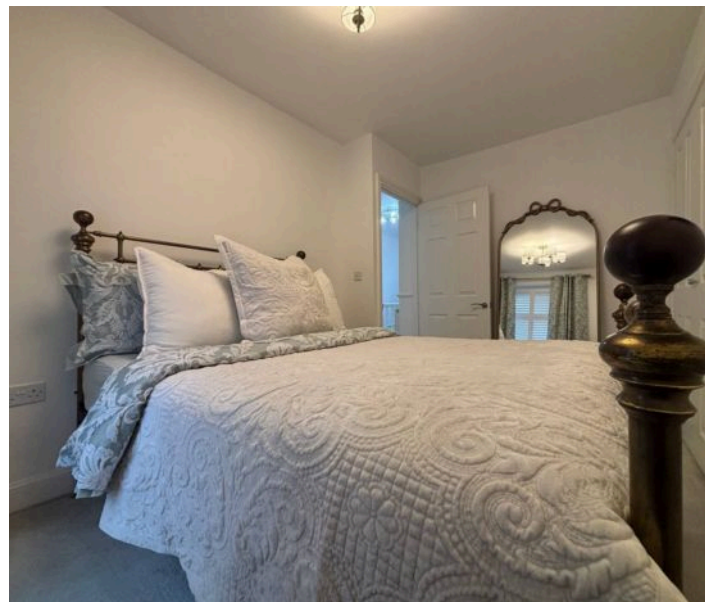
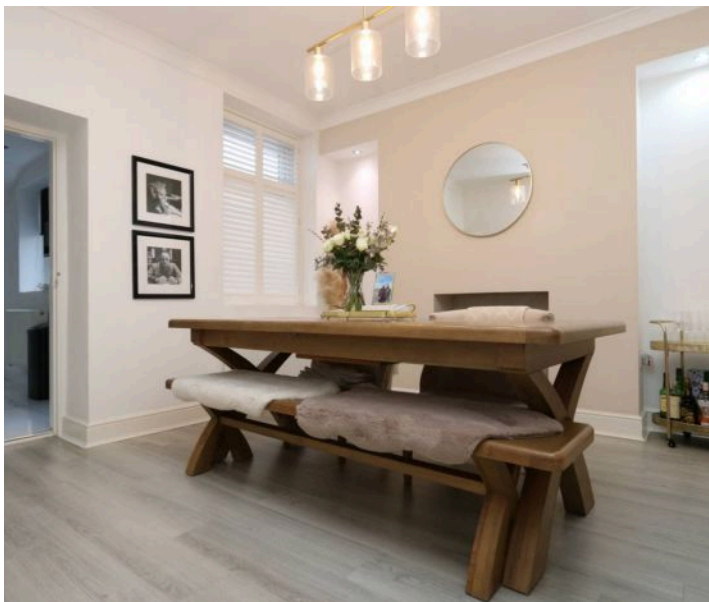
Council Tax band: C

Tenure: Freehold

EPC Energy Efficiency Rating: C

EPC Environmental Impact Rating:

- IDEAL FIRST TIME BUY OR INVESTMENT
- SHOW HOME PRESENTATION
- WEST END LOCATION
- SPACIOUS OPEN PLAN LOUNGE/DINER PERFECT FOR ENTERTAINING
- LARGE MODERN FITTED KITCHEN
- TWO BEDROOMS
- FIRST FLOOR MODERN FOUR PIECE BATHROOM
- LOW MAINTENANCE, FULLY ENCLOSED REAR GARDEN
- CATCHMENT FOR WHITMORE HIGH SCHOOL
- EPC C72





Hallway

Entrance into the property via a uPVC front door with opaque glazing into an entrance hallway. The hallway has wood effect flooring, smooth walls with half-height wood panelling and a smooth coved ceiling with spotlights. There is a radiator, a carpeted staircase giving access to the first floor and a door leading through into the lounge/diner.

Lounge

11' 5" x 10' 5" (3.48m x 3.18m)

A continuation of the wood effect flooring, smooth walls and a smooth coved ceiling. There is a front aspect window with shutters, a radiator and spotlights to the recesses. Open to the dining room.

Measurements have been taken into the recesses either side of the chimney breast.

Dining Room

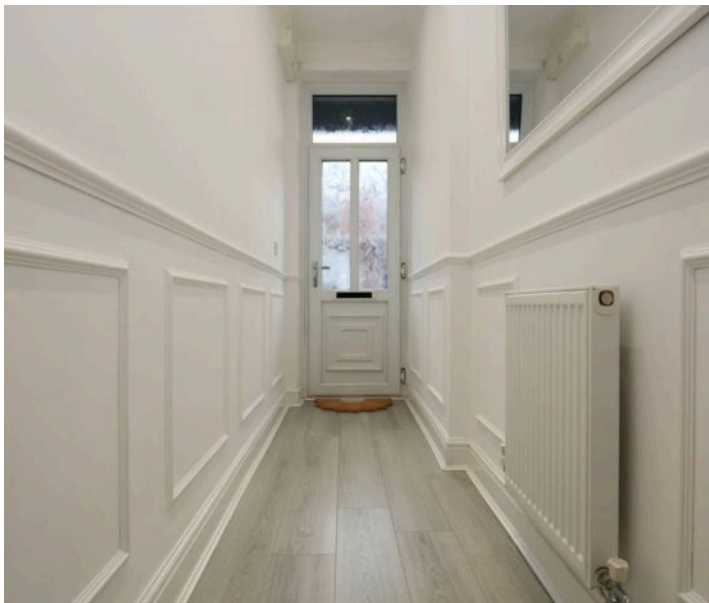
11' 10" x 11' 1" (3.61m x 3.38m)

A continuation of the wood effect flooring, smooth walls and a smooth coved ceiling. There is spotlights to the recesses, a rear aspect window with shutters, a radiator and ample space for a dining table and chairs. There is a door giving access to a storage cupboard under the stairs and a wooden glazed door giving access to the kitchen. Measurements have been taken into the recesses.

Kitchen

16' 9" x 8' 3" (5.10m x 2.51m)

The kitchen is tiled with smooth walls and a smooth ceiling with spotlights. The kitchen comprises a good range of modern white high-gloss eye and base level units with complementing black granite worktops. There is a stainless steel one and a half bowled sink inset with a stainless steel mixer tap overtop. Integrated appliances include a dishwasher, a washing machine, a wine fridge, a stainless steel five-ring gas hob, a stainless steel extractor hood





and an eye-level single oven. There is space for a microwave and a freestanding fridge/freezer. There is a cupboard housing the combi boiler, a radiator, a rear aspect window, two side aspect windows and a uPVC door with opaque glazing giving access to the rear garden.

Landing

A carpeted staircase gives access to a carpeted landing. The landing has smooth walls with half-height wood paneling and a smooth coved ceiling. There is a wooden balustrade, a radiator, a rear aspect window with shutters and doors giving access to two bedrooms and a bathroom.

Bedroom One

12' 0" x 8' 6" (3.65m x 2.60m)

Bedroom one is carpeted with smooth walls and a smooth ceiling. There is a front aspect window with shutters, a radiator, a built-in single wardrobe and a built-in double wardrobe.

Bedroom Two

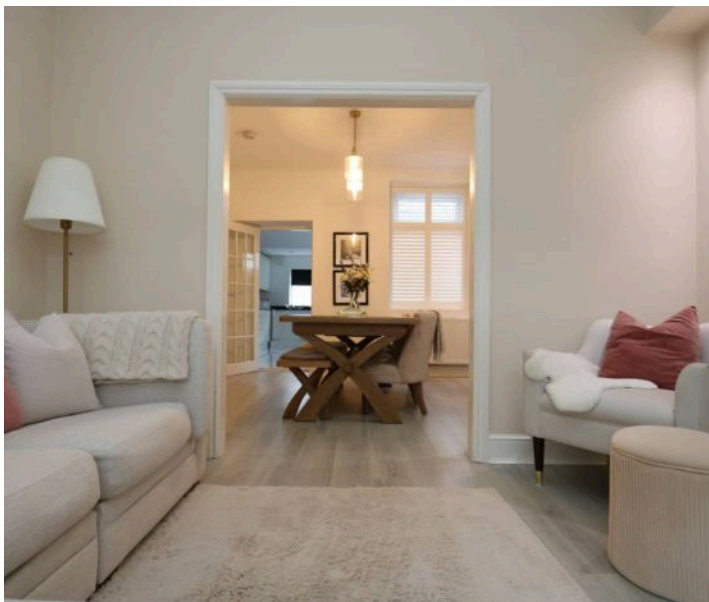
11' 9" x 5' 4" (3.59m x 1.62m)

Bedroom two is carpeted with smooth walls and a smooth ceiling. There is a front aspect window with shutters, a radiator, a built-in single wardrobe and loft access.

Bathroom

9' 6" x 8' 10" (2.90m x 2.70m)

The bathroom has tiled flooring, full-height wall tiling and a smooth ceiling with spotlights. There is a four piece white suite comprising a WC with a push button flush, a vanity wash basin with a stainless steel mixer tap, a white stand-alone bath with a stainless steel mixer tap/rinser and a walk-in shower cubicle with a stainless steel thermostatic shower inset and a glass sliding shower screen. There is also a rear aspect opaque window, a chrome towel rail and an extractor fan.





FRONT GARDEN

A small fore-courted front garden, fully enclosed by low brick walls and a pedestrian access gate.

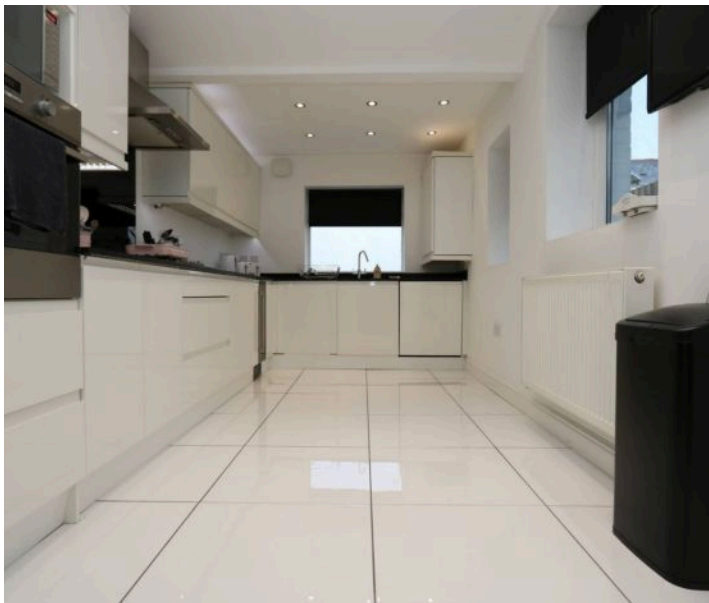
REAR GARDEN

A low maintenance rear garden laid to artificial lawn with raised flower beds. A timber gate provides access to the rear lane. The rear garden is fully enclosed by a mixture of brick walls and timber fencing. Ample space for outdoor seating!

ON STREET

1 Parking Space

Ample on-street parking available.











72 Glamorgan Street

Approximate Gross Internal Area
786 sq ft - 73 sq m



GROUND FLOOR

FIRST FLOOR

Not to Scale. Produced by The Plan Portal 2026
For Illustrative Purposes Only.



Chris Davies Estate Agents

Chris Davies Estate Agents, 24 High Street - CF62 7EA

01446 700007

barry@chris-davies.co.uk

www.chris-davies.co.uk/

HELPFUL INFORMATION - whilst we try to ensure our sales particulars are complete, accurate and reliable, if there is any point which is particularly important, please ask and we will be happy to check it, including specific information in respect of commuting links, surroundings, noise, views, or condition. For security purposes, applicants who wish to view will need to provide their name, address and telephone number. All measurements are approximate to the widest and longest points. Buyers are advised to instruct a solicitor to obtain verification of tenure and a surveyor to check that appliances, installations and services are in satisfactory condition.