



www.sterlinghomes.co.uk

01923 270 666
Kings Langley, Abbots
Langley & Watford:
01442 822 210
Property
Management
01442 879 996
& Country Homes:
Berkhamsted Select
01442 828 222
Aylesbury & Villages:
Ting, Wendover,

is there a price that would tempt you to sell or let your property?
Contact us for a free valuation
and let's see if we can tempt you!

Temptation comes in many forms...



Felden
£4,000 PER CALENDAR MONTH

Felden

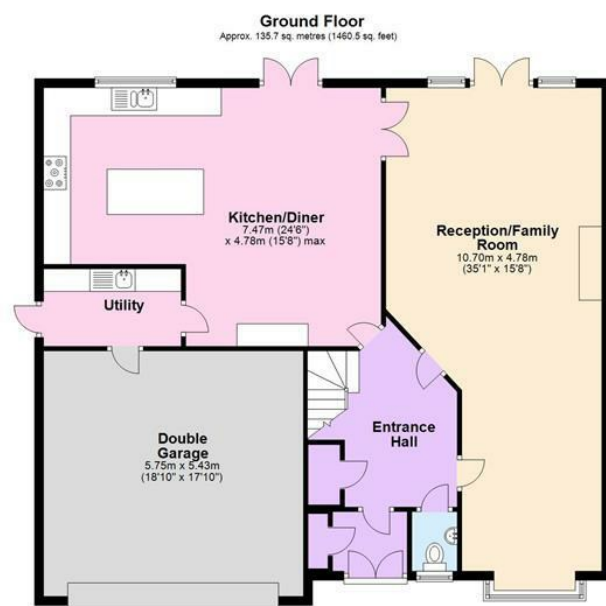
PER CALENDAR MONTH

£4,000 Per Calendar Month

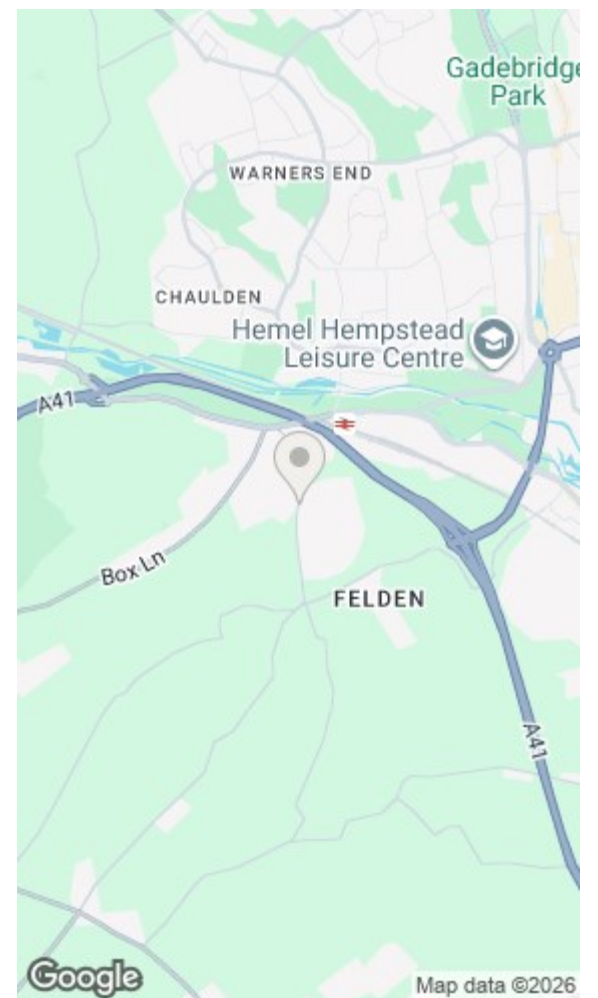
Sterling Lettings are delighted to offer for let this stunning five bedroom detached family home with garage & driveway parking conveniently situated within walking distance of Hemel Hempstead station which services London via Euston station. Internally the accommodation comprises entrance lobby hallway, spacious reception/family room with doors leading to the rear garden, stunning kitchen/diner with integrated appliances and further doors to garden, separate utility room, guest cloakroom, family bathroom with separate shower, five well appointed bedrooms, two of which benefit from en suite facilities. In addition to the private rear garden with patio area this wonderful property also benefits from a double garage with ample driveway parking. Offered Unfurnished & Available July 2026! Pets Considered!



www.sterlinghomes.co.uk



Total area: approx. 254.1 sq. metres (2735.5 sq. feet)
All measurements are approximate.
Plan produced using PlanItUp.



Energy Efficiency Rating		Environmental Impact (CO ₂) Rating	
Current	Potential	Current	Potential
79	84		

Energy Efficiency Rating: A (92 plus), B (81-91), C (69-80), D (55-68), E (39-54), F (21-38), G (1-20).
Environmental Impact (CO₂) Rating: A (81-91), B (69-80), C (55-68), D (39-54), E (21-38), F (1-38), G (1-38).



www.sterlinghomes.co.uk



www.sterlinghomes.co.uk



* Stunning Detached Family Home *
 Five Double Bedrooms * Stunning
 Kitchen/Diner * Garage & Driveway
 Parking * Three Bathrooms * Garden
 with Patio Area * Walking Distance to
 Station * Unfurnished * Pets
 Considered! * Available July 2026!
 *



www.sterlinghomes.co.uk

Distance to Stations
 Hemel Hempstead Station (0.5 Miles)
 Apsley Station (2.1 Miles)
 Berkhamsted Station (3.7 Miles)
 Kings Langley Station (6.3 Miles)
 Chesham Station (6.5 Miles)

Distance to Schools
 Roman Fields Academy & Forest
 House Education Centre (0.4 Miles)
 St Rose's Infant School & Nursery
 (0.7 Miles)
 Boxmoor Primary School (1.1 Miles)
 Westbrook Hay Preparatory School
 (1.3 Miles)
 The Hemel Hempstead School (1.4
 Miles)
 Lockers Park Preparatory School (1.6
 Miles)

Monies Payable
 There are no administration fees for
 the preparation of tenancy, the
 following costs are however
 applicable:

Holding Deposits - limited to a
 maximum of 1 week's rent and
 subject to statutory legislation on
 the refund of this payment should
 the tenancy not go ahead.

Security Deposits - limited to 5
 weeks rent as a maximum amount
 for tenancies where the annual rent
 is below £50,000, deposits for
 tenancies where the annual rent is
 £50,000 or more are limited to the
 equivalent of 6 weeks rent.

Late Rent Payment - Interest on late
 rent will be charged at base rate plus
 3% on a daily basis from the rent
 due date - This charge will be levied if
 a payment is not received in cleared
 funds by the due date as per the
 terms of the tenancy agreement.
 Repayment of interest due will take
 priority over any rent payments due
 to avoid outstanding amounts
 "rolling up"

Tenancy Amendments - £60 Inc VAT
 - This charge will be levied prior to
 any amendments (which will be
 subject to landlord agreement) being
 made to the standard tenancy
 agreement.

Agency Reference for new tenancy -
 £30 Inc Vat Per Tenant - This must
 be paid every time a request is
 received in order for us to provide
 any requested information relating to
 a previous tenancy with us to any
 new landlord/agent.

Material Information
 Rent - £4,000.00 per calendar month
 (£923.07 per calendar week)
 Deposit - £4,615.38
 Tenancy Term - 12 Months
 Council Tax Band - G (Dacorum
 Borough Council)
 Pets Considered - Yes



www.sterlinghomes.co.uk