



Palmyra Road, Gosport, PO12 4EF

welcome to

Palmyra Road, Gosport

Extended four bedroom semi-detached family home, located in a sought after road within Elson ** Master bedroom with en-suite shower room ** Three further generous size bedrooms & Re-fitted family shower room ** Kitchen/ dining room ** Lounge/ dining room & Study ** Approximately 200 rear garden.

Porch

Composite front door, Upvc obscure double glazed window.

Entrance Hall

Stairs to first floor with cupboard under, radiator.

Lounge

11' 5" max x 13' 5" max (3.48m max x 4.09m max)
Upvc double glazed bay window to front aspect, radiator, opening to dining room.

Dining Room

12' max x 9' 8" max (3.66m max x 2.95m max)
Double doors to study, radiator, serving hatch to kitchen.

Study

9' 8" x 6' 1" (2.95m x 1.85m)
Upvc double glazed French door to garden, electric radiator.

Kitchen/Dining Room

18' 7" max x 9' 3" max (5.66m max x 2.82m max)
Upvc double glazed windows to rear and side aspects, matching range of eye and base level units with work surface over, one and a half bowl sink drainer, space for American style fridge/freezer, plumbing for washing machine/ dishwasher and tumble dryer.

Landing

Upvc double glazed window to side aspect, stairs leading to master bedroom.

Bedroom Two

11' 9" max x 9' 8" max (3.58m max x 2.95m max)
Upvc double glazed window to rear aspect, radiator.

Bedroom Three

11' 6" max x 13' 3" max (3.51m max x 4.04m max)
Upvc double glazed bay window to front aspect, radiator.

Bedroom Four

8' 8" x 7' 5" (2.64m x 2.26m)
Upvc double glazed window to rear aspect, radiator.

Re-Fitted Family Shower Room

Upvc obscure double glazed window to front aspect, shower cubicle, wc with concealed cistern, wash hand basin with utility cupboard under, heated towel rail, extractor, tiled surrounds.





Landing Two

Upvc double glazed window to side aspect.

Master Bedroom

15' 9" max x 11' 3" max (4.80m max x 3.43m max)
Upvc double glazed window to rear aspect, two sky lights, radiator, eave storage, restricted head room to parts.

En-Suite Shower Room

Upvc obscure double glazed window to rear aspect, heated towel rail, shower cubicle, wc, wash hand basin with utility under, tiled surrounds.

Driveway

Block paved driveway providing off street parking for numerous cars,

Rear Garden

Patio extends to laid to lawn area, shrub/ flower borders, enclosed to perimeters, pedestrian side access, outside tap, door to outside Wc.

Garage To Rear & Hardstanding

Rear vehicle access, double gates leading to hardstanding, garage with up & over door and door to side aspect.



view this property online fox-and-sons.co.uk/Property/GOS113390



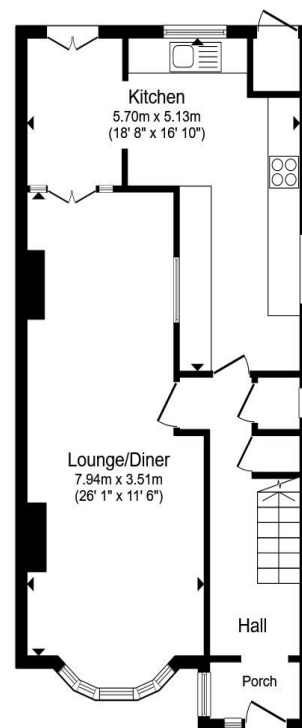
welcome to

Palmyra Road, Gosport

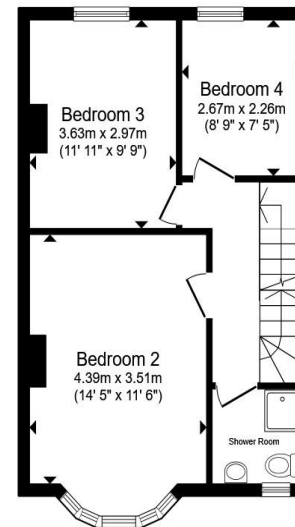
- Extended four bedroom semi-detached family home, located in a sought after road within Elson
- Master bedroom with en-suite shower room
- Three further generous size bedrooms & Re-fitted family shower room
- Kitchen/ dining room
- Lounge/ dining room & Study

Tenure: Freehold EPC Rating: C
Council Tax Band: C

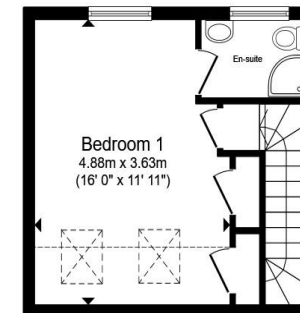
offers in excess of
£350,000



Ground Floor



First Floor



Second Floor

Total floor area 123.6 m² (1,331 sq.ft.) approx

This floor plan is for illustrative purposes only. It is not drawn to scale. Any measurements, floor areas (including any total floor area), openings and orientation are approximate. No details are guaranteed, they cannot be relied upon for any purpose and they do not form part of any agreement. No liability is taken for any error, omission or misstatement. A party must rely upon its own inspection(s). Powered by www.propertybox.io



view this property online fox-and-sons.co.uk/Property/GOS113390



Property Ref:
GOS113390 - 0004

1. MONEY LAUNDERING REGULATIONS Intending purchasers will be asked to produce identification documentation at a later stage and we would ask for your co-operation in order that there is no delay in agreeing the sale. 2. These particulars do not constitute part or all of an offer or contract. 3. The measurements indicated are supplied for guidance only and as such must be considered incorrect. Potential buyers are advised to recheck measurements before committing to any expense. 4. We have not tested any apparatus, equipment, fixtures or services and it is in the buyers interest to check the working condition of any appliances. 5. Where an EPC, or a Home Report (Scotland only) is held for this property, it is available for inspection at the branch by appointment. If you require a printed version of a Home Report, you will need to pay a reasonable production charge reflecting printing and other costs. 6. We are not able to offer an opinion either written or verbal on the content of these reports and this must be obtained from your legal representative. 7. Whilst we take care in preparing these reports, a buyer should ensure that his/her legal representative confirms as soon as possible all matters relating to title including the extent and boundaries of the property and other important matters before exchange of contracts.

Fox & Sons is a trading name of Sequence (UK) Limited which is registered in England and Wales under company number 4268443, Registered Office is Cumbria House, 16-20 Hockliffe Street, Leighton Buzzard, Bedfordshire, LU7 1GN. VAT Registration Number is 500 2481 05.



023 9250 3733



Gosport@fox-and-sons.co.uk



10 High Street, GOSPORT, Hampshire, PO12 1BX



fox-and-sons.co.uk

