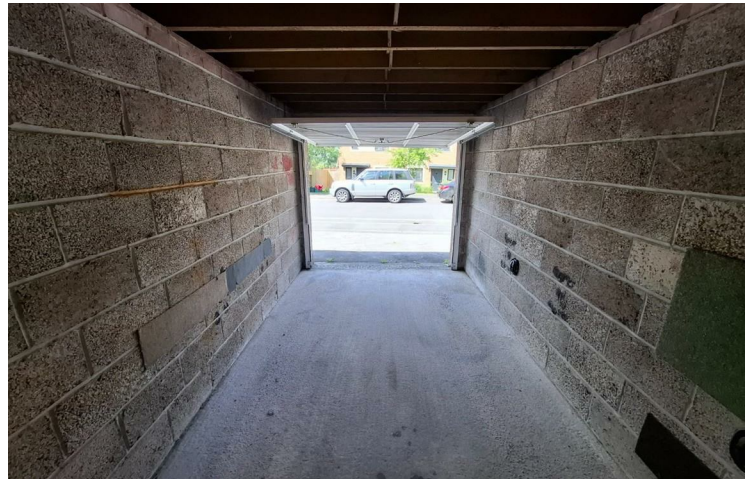


Garage at 186 Mendip Road, Yatton, North Somerset, BS49 4ET

£17,995



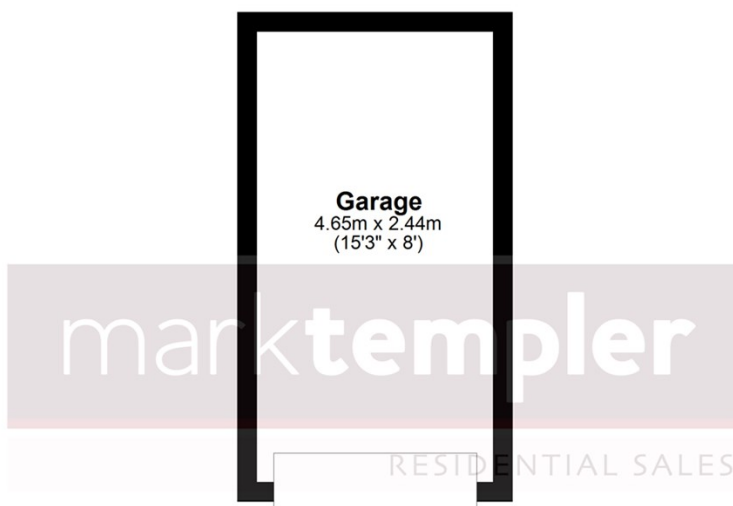
- Freehold garage
- Ideal investment opportunity
- Recently refitted garage door and new roof
- Close to Yatton's mainline railway station

Rarely available to the market, this freehold single garage presents an ideal opportunity for someone looking for a low cost investment or somewhere secure to store a vehicle. This garage has recently had a new up and over door fitted and the flat roof replaced.

Call Mark Templer Residential Sales on 01934 833253 to arrange your appointment now.

Ground Floor

Approx. 11.3 sq. metres (122.0 sq. feet)



Total area: approx. 11.3 sq. metres (122.0 sq. feet)

Whilst every attempt has been made to ensure the accuracy of the floorplan contained here, measurements of doors, windows, rooms and any other items are approximate and no responsibility is taken for any error, omission or mis-statement. This plan is for illustrative purposes only and should be used as such by any prospective purchaser. The services, systems and appliances shown have not been tested and no guarantee as to their operability or efficiency can be given.

Plan produced using PlanUp.