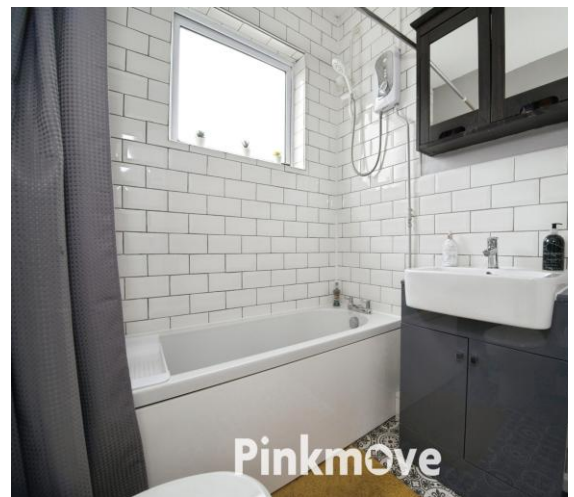




Christchurch Road

Offers in excess of £175,000

- New Price
- Bright Reception Rooms with Open-Plan Archway
- Spacious Kitchen/Breakfast Room with Breakfast Bar
- Fully Enclosed Rear Garden
- Close to Beechwood Park, amenities and transport links
- Ideal for First-Time Buyers or Investors
- EPC Rating: D



Pinkmove

01633 746088
team@pinkmove.co.uk



About the property

This well-kept two-bedroom mid-terraced home offers a welcoming and easy-to-live-in space, ideal for first-time buyers, downsizers or those looking for a home that feels comfortable from the moment you walk in.

A standout feature of the property is the natural light throughout the day, with particularly lovely sunsets enjoyed from the rear of the house and garden. The patio has been a favourite spot for relaxing and spending time with visiting family and friends.

The ground floor has a great sense of flow, with two reception rooms connected by an open archway, creating flexible space for both living and dining. To the rear, the kitchen/breakfast room offers good storage, space for appliances and direct access out to the garden.

Upstairs, there is a generous main bedroom and a second smaller double bedroom, which would also work well as a guest room, home office or dressing room. The bathroom includes a white suite with bath and shower over, wash-hand basin and WC.

Outside, the enclosed rear garden is designed to be low maintenance, with a mix of planting and seating areas. The far end provides a very quiet, private space to sit and unwind.

Situated within reach of Beechwood Park, local shops and transport links, the property offers a great balance of convenience and a more peaceful residential setting.





Accommodation

Reception Room

Kitchen

Bedroom 1

Bedroom 2

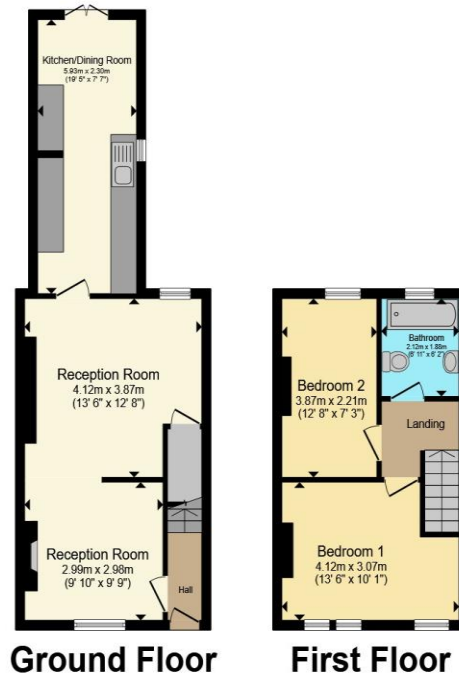
Bathroom

01633 746088

team@pinkmove.co.uk

Pinkmove

Floorplan



Total floor area 71.2 sq.m. (767 sq.ft.) approx

This floor plan is for illustrative purposes only. It is not drawn to scale. Any measurements, floor areas (including any total floor area), openings and orientation are approximate. No details are guaranteed, they cannot be relied upon for any purpose and they do not form part of any agreement. No liability is taken for any error, omission or misstatement. A party must rely upon its own inspection(s). Powered by www.localagent.com

Pinkmove

Important Information

Note while we endeavour to make our sales details accurate and reliable, if there is any point which is of particular interest to you, please contact the office and we will be pleased to confirm the position for you. We have not personally tested any apparatus, equipment, fixtures, fittings or services and cannot verify they are in working order or fit for their purposes. Nothing in these particulars is intended to indicate that carpets or curtains, furnishings or fittings, electrical goods (whether wired or not). Gas fires or light fittings or any other fixtures not expressly included form part of the property offered for sale. This computer generated Floorplan, if applicable, is intended as a general guide to the layout and design of the property. It is not to scale and should not be relied upon for dimensions. Tenure: We cannot confirm the tenure of the property as we have not had access to the legal documents. The buyer is advised to obtain verification from their solicitor or surveyor.

Peter Alan Limited is registered in England and Wales under company number 2073153. Registered Office is Cumbria House, 16-20 Hockliffe Street, Leighton Buzzard, Bedfordshire, LU7 1GN. VAT Registration Number is 500 2481 05. For activities relating to regulated mortgages and non-investment insurance contracts, Peter Alan Limited is an appointed representative of Connells Limited which is authorised and regulated by the Financial Conduct Authority. Connells Limited's Financial Services Register number is 302221. Most buy-to-let

