



Buttermere Way

Guide Price £160,000 - £165,000

- Guide Price £160,000 to £165,000
- Three well-proportioned bedrooms
- Spacious and bright living room
- Convenient ground floor WC
- Fitted kitchen with dining space
- Enclosed rear garden with patio area
- Low-maintenance front garden
- EPC Rating: C



Pinkmove

01633 746088
team@pinkmove.co.uk



About the property

Situated in an established residential area, this well maintained three-bedroom terraced property offers spacious and versatile living accommodation, ideal for families, first-time buyers or investors alike.

The property is entered directly into a welcoming hallway, leading into a bright and generously sized living room, providing a comfortable space for both relaxing and entertaining.

To the rear, the kitchen offers ample cupboard and worktop space, with room for dining and direct access to the garden.

A convenient ground floor WC completes the downstairs accommodation.

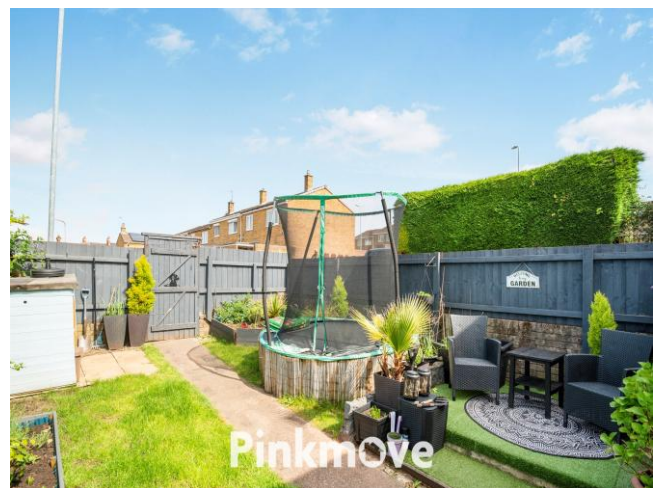
To the first floor, there are three bedrooms comprising two good-sized doubles and a single bedroom, ideal for use as a nursery, home office or dressing room.

The family bathroom is fitted with a bath and overhead shower.

Externally, the rear garden is fully enclosed and well arranged, featuring a combination of lawn, patio and seating areas, creating a perfect space for outdoor dining and family enjoyment.

To the front, the property benefits from a low-maintenance garden.

Buttermere Way is ideally located close to local schools, shops and amenities, with excellent transport links and easy access to the M4 motorway, making it perfect for commuters.





Accommodation

Kitchen

Wc

Living Room

Bedroom 1

Bedroom 2

Bedroom 3

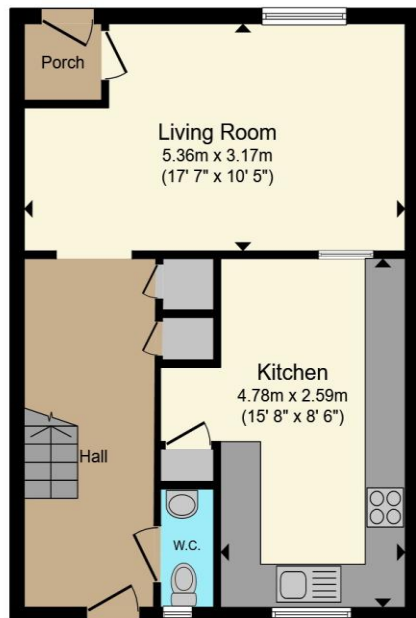
Bathroom

01633 746088

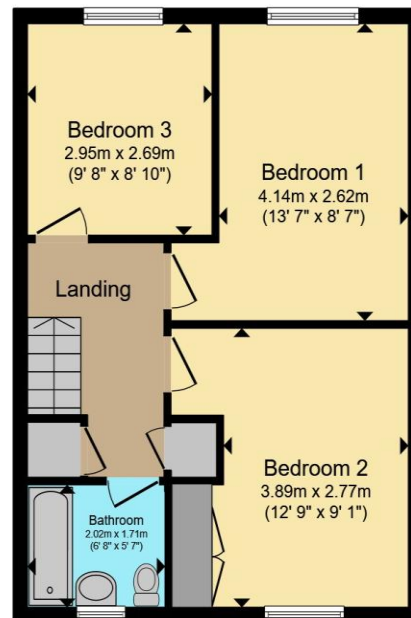
team@pinkmove.co.uk

Pinkmove

Floorplan



Ground Floor



First Floor

Total floor area 92.7 sq.m. (998 sq.ft.) approx

This floor plan is for illustrative purposes only. It is not drawn to scale. Any measurements, floor areas (including any total floor area), openings and orientation are approximate. No details are guaranteed, they cannot be relied upon for any purpose and they do not form part of any agreement. No liability is taken for any error, omission or misstatement. A party must rely upon its own inspection(s). Powered by www.focalagent.com

Pinkmove

Important Information

Note while we endeavour to make our sales details accurate and reliable, if there is any point which is of particular interest to you, please contact the office and we will be pleased to confirm the position for you. We have not personally tested any apparatus, equipment, fixtures, fittings or services and cannot verify they are in working order or fit for their purposes. Nothing in these particulars is intended to indicate that carpets or curtains, furnishings or fittings, electrical goods (whether wired or not). Gas fires or light fittings or any other fixtures not expressly included form part of the property offered for sale. This computer generated Floorplan, if applicable, is intended as a general guide to the layout and design of the property. It is not to scale and should not be relied upon for dimensions. Tenure: We cannot confirm the tenure of the property as we have not had access to the legal documents. The buyer is advised to obtain verification from their solicitor or surveyor.

Peter Alan Limited is registered in England and Wales under company number 2073153, Registered Office is Cumbria House, 16-20 Hockliffe Street, Leighton Buzzard, Bedfordshire, LU7 1GN. VAT Registration Number is 500 2481 05. For activities relating to regulated mortgages and non-investment insurance contracts, Peter Alan Limited is an appointed representative of Connells Limited which is authorised and regulated by the Financial Conduct Authority. Connells Limited's Financial Services Register number is 302221. Most buy-to-let

