



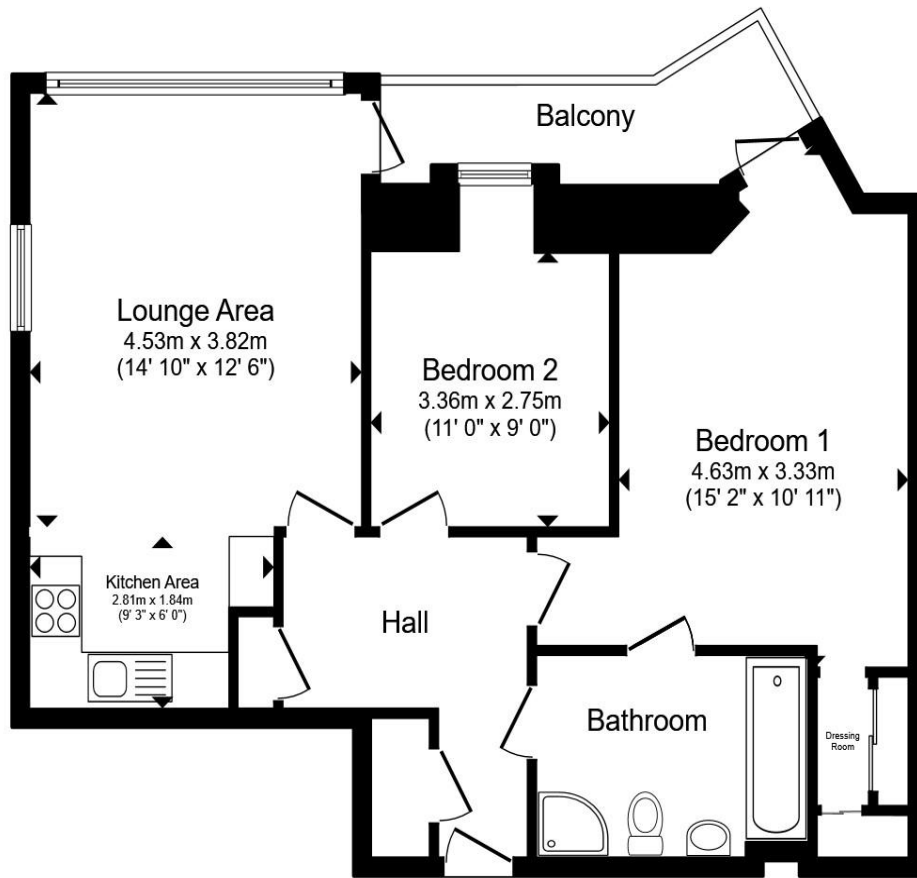
Brookfield House Selden Hill,HEMEL HEMPSTEAD HP2 4FA

welcome to

Brookfield House Selden Hill, HEMEL HEMPSTEAD

Located in the Centre of Town and offered for sale with NO UPPER CHAIN is this two bedroom upper floor apartment. An ideal first time purchase. Give the office a call to book your viewing today.





Ground Floor

- Entrance Hall**
- Open Plan Lounge / Kitchen**
- Balcony**
- Bedroom One**
- Bedroom Two**
- Jack & Jill Bathroom**
- Outside**
- Under Cover Allocated Parking**
- Outside Storage Cupboard**

Total floor area 69.1 m² (744 sq.ft.) approx

This floor plan is for illustrative purposes only. It is not drawn to scale. Any measurements, floor areas (including any total floor area), openings and orientation are approximate. No details are guaranteed, they cannot be relied upon for any purpose and they do not form part of any agreement. No liability is taken for any error, omission or misstatement. A party must rely upon its own inspection(s). Powered by www.propertybox.io



welcome to

Brookfield House Selden Hill, HEMEL HEMPSTEAD

- No Upper Chain
- Centre Of Town Location
- Two Bedroom Upper Floor Apartment With Under Cover Allocated Parking
- Spacious Open Plan Lounge / Kitchen
- Modern Jack & Jill Bathroom

Tenure: Leasehold EPC Rating: C

Council Tax Band: D Service Charge: 2400.00

Ground Rent: 200.00

This is a Leasehold property with details as follows; Term of Lease 999 years from 01 Jan 2003. Should you require further information please contact the branch. Please Note additional fees could be incurred for items such as Leasehold packs.

offers over

£230,000



Please note the marker reflects the postcode not the actual property

view this property online [brownandmerry.co.uk/Property/HHD111835](https://www.brownandmerry.co.uk/Property/HHD111835)



Property Ref:
HHD111835 - 0004

1. MONEY LAUNDERING REGULATIONS Intending purchasers will be asked to produce identification documentation at a later stage and we would ask for your co-operation in order that there is no delay in agreeing the sale. 2. These particulars do not constitute part or all of an offer or contract. 3. The measurements indicated are supplied for guidance only and as such must be considered incorrect. Potential buyers are advised to recheck measurements before committing to any expense. 4. We have not tested any apparatus, equipment, fixtures or services and it is in the buyers interest to check the working condition of any appliances. 5. Where an EPC, or a Home Report (Scotland only) is held for this property, it is available for inspection at the branch by appointment. If you require a printed version of a Home Report, you will need to pay a reasonable production charge reflecting printing and other costs. 6. We are not able to offer an opinion either written or verbal on the content of these reports and this must be obtained from your legal representative. 7. Whilst we take care in preparing these reports, a buyer should ensure that his/her legal representative confirms as soon as possible all matters relating to title including the extent and boundaries of the property and other important matters before exchange of contracts.


brown & merry



01442 232400



HemelHempstead@brownandmerry.co.uk



57 Marlowes, HEMEL HEMPSTEAD,
Hertfordshire, HP1 1LE



[brownandmerry.co.uk](https://www.brownandmerry.co.uk)