



For Sale

26 Woodcote Road, Warwick

Offers Over £310,000

3

1

1

2303 sq ft

1066 sq ft

Nathaniel Cleaver

07793 363210

nathaniel@thepropertyexperts.co.uk

***** END TERRACE PROPERTY FOR SALE IN POPULAR LOCATION & OFFERED FOR SALE WITH NO ONWARD CHAIN *****

... END TERRACE PROPERTY FOR SALE IN POPULAR LOCATION & OFFERED FOR SALE WITH NO ONWARD CHAIN ...

This traditional end terrace property is deceiving on the eye and a great size throughout with a quite substantial sized rear garden.

This end terrace home, located in the outstanding Coten End Primary School catchment area would be ideal for family living or a buy to let investment.

It is conveniently positioned to all local amenities, parks, schools and a very short walks to Warwick Hospital and Warwick Train Station is opposite the front door.

In brief the ground floor comprises of; entrance hallway, living room with large window to the front aspect, dining area, kitchen with access to the enclosed rear garden and downstairs WC, there is also a cupboard under the stairs.

Upstairs are two good sized double bedrooms and a further single room that could also be used

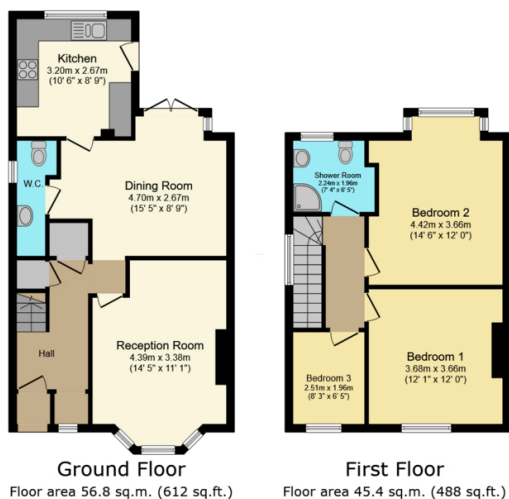


The Property Experts UK

01926436105



- End Terraced House
- Three Bedrooms
- Large Living Room
- Dining Area & Downstairs WC
- Kitchen
- Substantial Sized Rear Garden
- Close To All Local Amenities, Hospital & Train Station
- Great Track Record As a Buy To Let
- No Onward Chain
- EPC Rating - C



Total floor area: 102.2 sq.m. (1,100 sq.ft.)

This floor plan is for illustrative purposes only. It is not drawn to scale. Any measurements, floor areas (including any total floor area), openings and orientations are approximate. No details are guaranteed, they cannot be relied upon for any purpose and do not form any part of any agreement. No liability is taken for any error, omission or misstatement. A party must rely upon its own inspection(s). Powered by www.Propertybox.io

