



PORTLAND TERRACE
RICHMOND

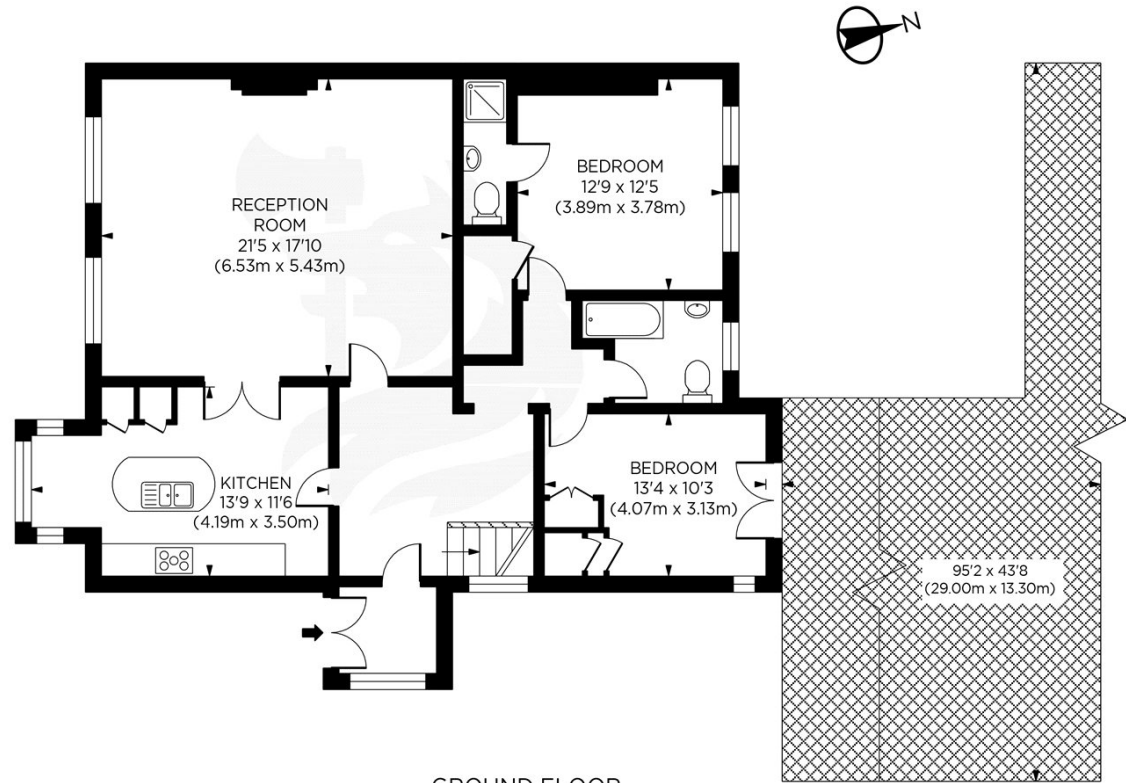
JACKSON-STOPS 

PORTLAND TERRACE, RICHMOND, TW9

ASKING PRICE: £6,350 PCM

In the heart of Richmond, overlooking The Green is this raised ground floor apartment, with two large bedrooms. The property has its own entrance, and the luxury of a private garden to enjoy all year round.

Located on Richmond Green, moments from Richmond town centre with it's numerous shops, restaurants, two theatres and Richmond Station, National Rail (Waterloo to Reading line), London Underground District line and also the London Overground North London Line.



GROUND FLOOR

1 Portland Terrace TW9
Gross Internal Area 1223 sq ft/114 sq metres
c.photosandfloorplans.com

KEY FEATURES

- Rear Private Garden
- Excellent Location
- Two Bathrooms
- Overlooking The Green
- Two Double Bedrooms
- Listed Building

Energy Rating: C. We aim to make our particulars both accurate and reliable. However they are not guaranteed; nor do they form part of an offer or contract. If you require clarification on any points then please contact us, especially if you are travelling some distance to view. Please note that appliances and heating systems have not been tested and therefore no warranties can be given as to their good working order.

ASKING PRICE: £6,350 PCM

TEDDINGTON

020 8943 9955

teddingtonlettings@jackson-stops.com

jackson-stops.co.uk

JACKSON-STOPS 