



Lawford Crescent | | Yateley | GU46 6JX

Offers Over £455,000

Freehold

*Waterford's* W  
Residential Sales & Lettings

Lawford Crescent |  
Yateley | GU46 6JX  
Offers Over £455,000

A two bedroom semi detached bungalow located close to Yateley town Centre.

- Semi detached bungalow
- Conservatory
- Close to the village centre
- Enclosed rear garden
- In excellent condition throughout
- Ample off street parking and garage

### Location

Positioned in a highly sought-after and quiet location, this property offers easy access to Yateley town centre, local schools, amenities, and excellent travel links to surrounding towns and villages by road and rail, including access to the M3 and M4 motorways.

### Description

Situated in a popular location is this well





presented two bedroom semi detached bungalow. Accommodation comprises of a entrance hall , living room, modern kitchen, two double bedrooms, family bathroom, and spacious 18ft conservatory opening up to the large rear garden. Outside at the front their is a block paved driveway with off street parking for several vehicles leading to a garage.



# Lawford Crescent, Yateley, GU46

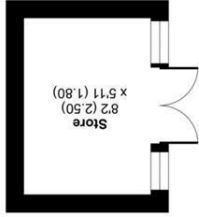
Approximate Area = 858 sq ft / 79.7 sq m

Garage = 132 sq ft / 12.2 sq m

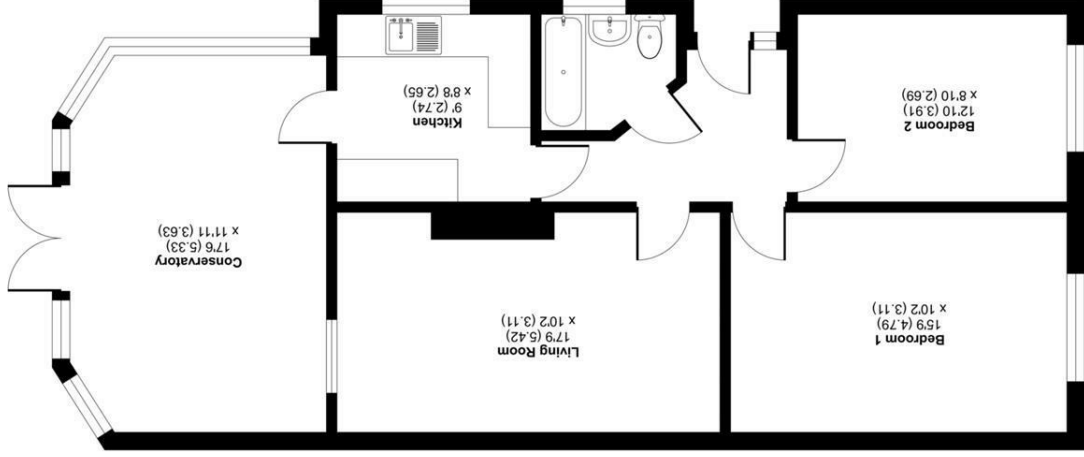
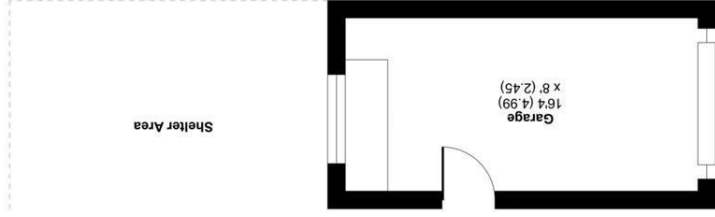
Outbuilding = 48 sq ft / 4.4 sq m

Total = 1038 sq ft / 96.3 sq m

For identification only - Not to scale

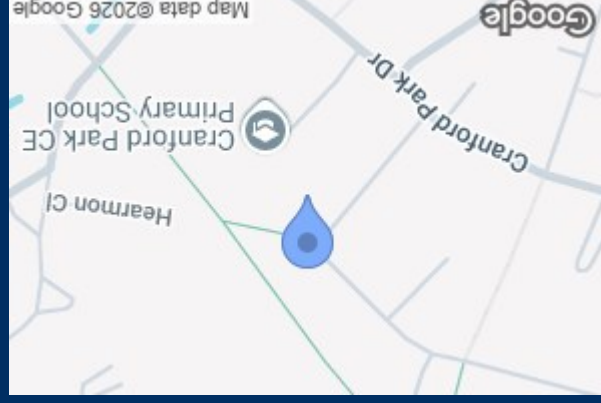
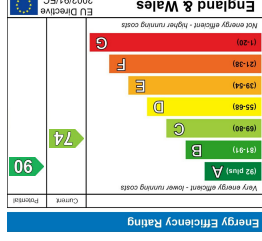


OUTBUILDING



GROUND FLOOR

Waterfords Residential Sales & Lettings  
 Produced for Waterfords. REF: 1296077  
 Floor plan produced in accordance with RICS Property Measurement 2nd Edition, incorporating International Property Measurement Standards (IPMS2 Residential). © nchecomm 2025.



35 Plough Road  
 Yateley  
 Hampshire  
 GU46 7UW  
 01252 870222  
 yateley@waterfords.co.uk