



Scan me to get a **detailed property report & valuation** on your house!



Harrad House, Wood Street, Woodside Park
Offers Over £110,000

complete ●●●
ESTATE AGENTS

Harrad House, Wood Street, Woodside Park, Rugby

Complete Estate Agents are pleased to bring to market this one bedroom first floor apartment, ideally situated within a short walk of Rugby Railway Station, Rugby Town Centre and Rugby's main retail parks. The development is finished to a very high specification throughout, with a modern fully fitted kitchen including integrated dishwasher, washing machine and built-in fridge/freezer. Rooms benefit from an abundance of natural light and are complemented by contemporary flooring throughout. Further features include double glazing, modern electric heating, selected units with a Juliet balcony, and allocated off-road parking. The property is to be sold with a tenant in situ with an income of £9000 per annum.

Entrance Hall

Security entrance system.

Open Plan living / Kitchen

Spacious open plan living space with modern fully fitted kitchen and built-in appliances. Double glazed windows. Electric heating.

Master Bedroom

Electric wall mounted heater. Double glazed window.

Bathroom

Stylish toilet, wash hand basin with storage, heated towel rail and fully tiled shower enclosure.



Outside

Allocated parking space available upon request. Landscaped gardens and paved pathways.

Utilities

Smart metering throughout

About Rugby

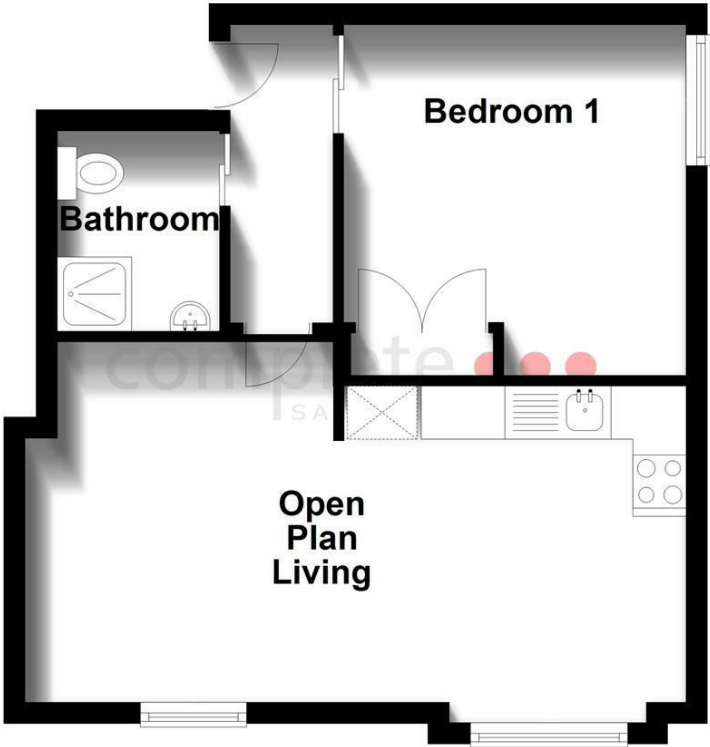
Rugby is a market town in Warwickshire, England, on the River Avon. The town has a population of 70,628 (2011 census[1]) making it the second largest town in the county. The enclosing Borough of Rugby has a population of 100,500 (2011 census). Rugby is 13 miles (21 km) east of Coventry, on the eastern edge of Warwickshire, near the borders with Northamptonshire and Leicestershire. The town is credited with being the birthplace of rugby football.

Rugby Borough Council

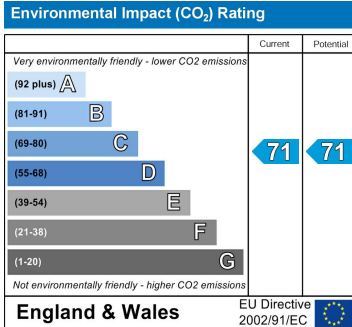
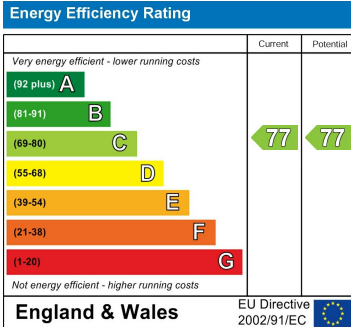
Rugby Borough Council,
Town Hall,
Evreux Way,
Rugby
CV21 2RR



Ground Floor



This floorplan is to be used as a guide only and not be taken as fact or to scale. The property may be different to actual diagram shown and square footage may differ.
Plan produced using PlanUp.



Misrepresentation Act 1967 - These particulars are believed to be correct but their accuracy is not guaranteed nor do they form part of any contract.

18 Church Street, Rugby, Warwickshire, CV21 3PU
 T: 01788 550 800
 sales@complete247.co.uk
 www.complete247.co.uk

