



**West Terrace, Eastbourne BN21 4QX**

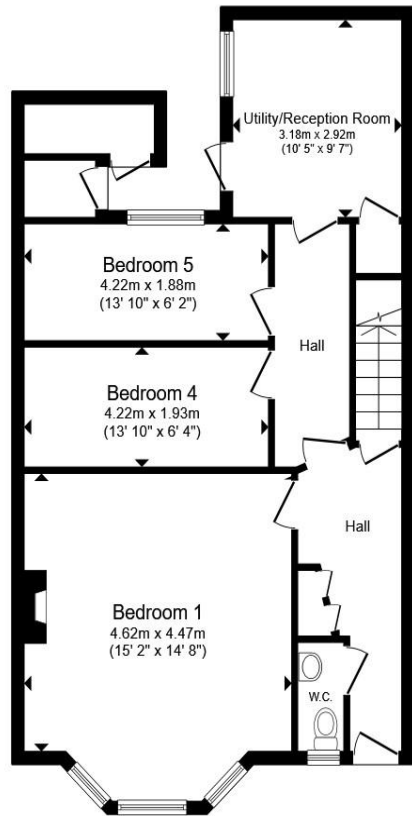
**welcome to**

**West Terrace, Eastbourne**

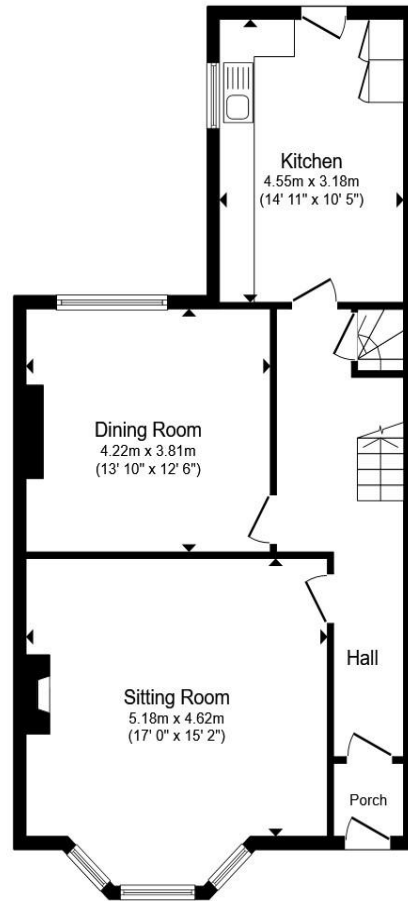
**\*\*GUIDE PRICE - £500,000 - £550,00\*\***

Chain-free six-bedroom period townhouse close to Eastbourne town centre and seafront. Offers flexible three-floor accommodation, including a lower ground level with its own entrance—ideal for guest use or potential income. Low-maintenance front and rear gardens.

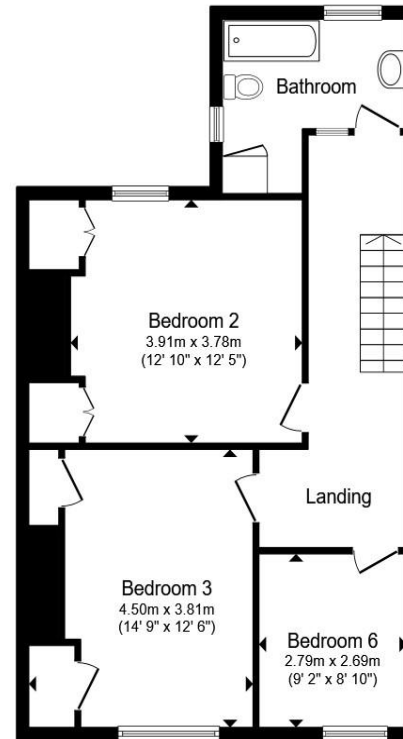




**Lower Ground Floor**



**Ground Floor**



**First Floor**

- Main Entrance Hall**
- Lounge**
- Dining Room**
- Kitchen**
- First Floor Landing**
- Bedroom 2**
- Bedroom 3**
- Bedroom 6**
- Bathroom**
- Lower Ground Entrance Hall**
- Bedroom 1**
- Reception Room / Bedroom 4**
- Bedroom 5**
- Reception Room**
- Cloakroom**
- Rear Garden**

Total floor area 206.4 m<sup>2</sup> (2,221 sq.ft.) approx

This floor plan is for illustrative purposes only. It is not drawn to scale. Any measurements, floor areas (including any total floor area), openings and orientation are approximate. No details are guaranteed, they cannot be relied upon for any purpose and they do not form part of any agreement. No liability is taken for any error, omission or misstatement. A party must rely upon its own inspection(s). Powered by [www.propertybox.io](http://www.propertybox.io)



welcome to

## West Terrace, Eastbourne

- \*\*\* GUIDE PRICE - £500,000 - £550,000 \*\*\*
- CHAIN FREE
- FLEXIBLE THREE STOREY LAYOUT
- LOWER GROUND FLOOR WITH PRIVATE ENTRANCE
- BAY FRONTED LOUNGE

Tenure: Freehold EPC Rating: D

Council Tax Band: F

guide price

**£500,000 - £550,000**



Please note the marker reflects the postcode not the actual property

**view this property online** [fox-and-sons.co.uk/Property/EBN120520](https://fox-and-sons.co.uk/Property/EBN120520)



Property Ref:  
EBN120520 - 0004

1. MONEY LAUNDERING REGULATIONS Intending purchasers will be asked to produce identification documentation at a later stage and we would ask for your co-operation in order that there is no delay in agreeing the sale. 2. These particulars do not constitute part or all of an offer or contract. 3. The measurements indicated are supplied for guidance only and as such must be considered incorrect. Potential buyers are advised to recheck measurements before committing to any expense. 4. We have not tested any apparatus, equipment, fixtures or services and it is in the buyers interest to check the working condition of any appliances. 5. Where an EPC, or a Home Report (Scotland only) is held for this property, it is available for inspection at the branch by appointment. If you require a printed version of a Home Report, you will need to pay a reasonable production charge reflecting printing and other costs. 6. We are not able to offer an opinion either written or verbal on the content of these reports and this must be obtained from your legal representative. 7. Whilst we take care in preparing these reports, a buyer should ensure that his/her legal representative confirms as soon as possible all matters relating to title including the extent and boundaries of the property and other important matters before exchange of contracts.

  
fox & sons



**01323 410911**



Eastbourne@fox-and-sons.co.uk



19 Cornfield Road, EASTBOURNE, East Sussex,  
BN21 4QD



**fox-and-sons.co.uk**