



Pathfinder Way, Warboys Huntingdon  
**£450,000** Freehold

**Sharman  
Quinney**

# Key Features



- Master Bedroom with En-Suite
- Five SPACIOUS Bedrooms
- Spacious 22 Foot Dual Aspect Lounge with Featured Electric Log Burner
- STUNNING 22 Foot Kitchen/Diner
- Family Bathroom with Four-Piece Suite
- Generous Corner Plot

## Ground Floor

Entrance Hall  
Leading to;

Lounge - 11'9" Max x 22'7" (3.59m Max x 6.90m)  
Featured Electric Log Burner with Dual aspect windows with French Doors leading to the Garden.

Kitchen/Diner - 13'4" Max x 22'6" (4.07m Max x 6.86m)



Stunning WREN Kitchen with a matching range of base and eye level units with a separate Island. Dual aspect windows to front and rear.

Utility Room - 5'11" x 5'7" (1.80m x 1.72m)  
Read door leading to the Garden.

Cloakroom -  
Recently decorated and fitted with a two-piece suite and comprising of a wash hand basin and low-level-WC.

First Floor  
Master Bedroom - 11'10" x 13'4" (3.61m x 4.09m)  
Window to front and leading to;

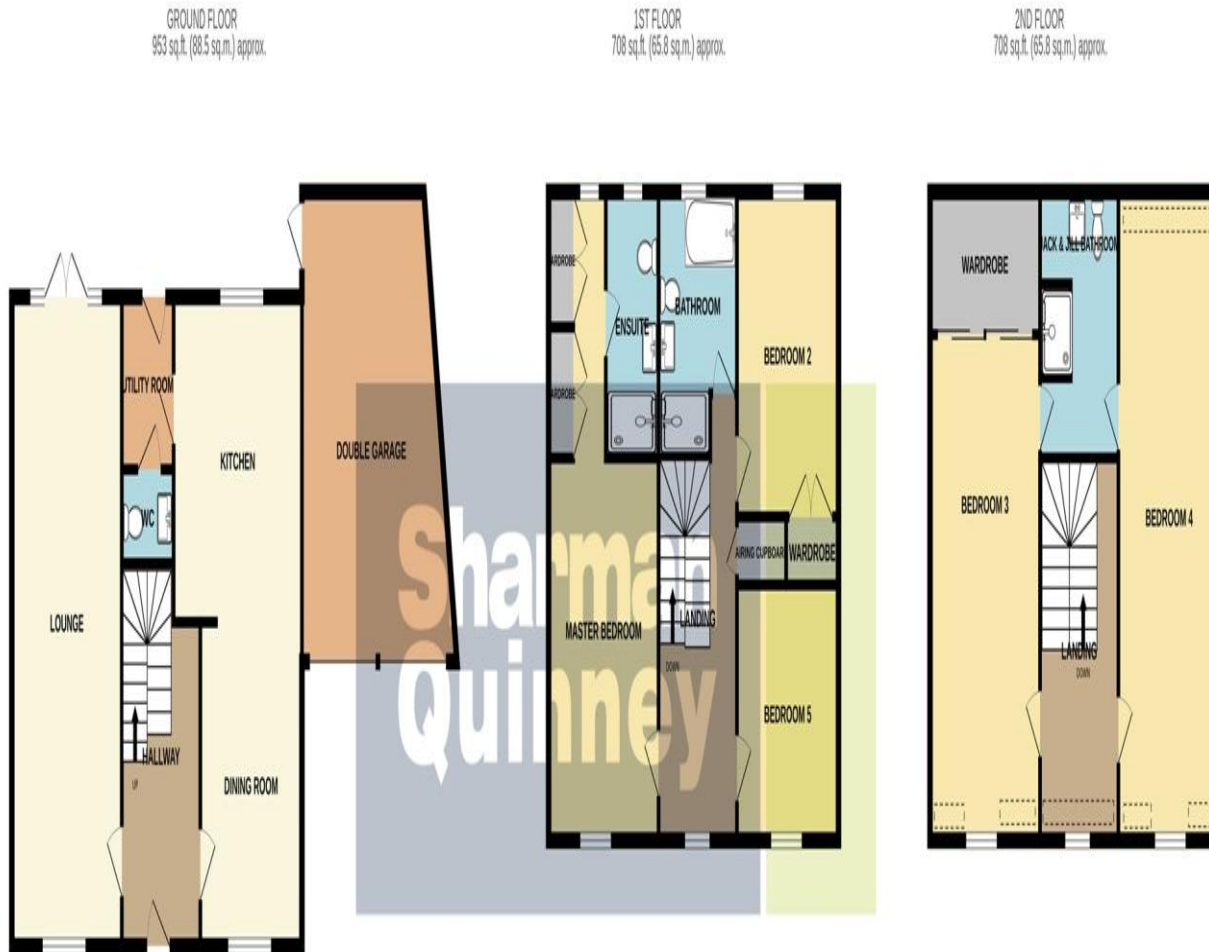
Dressing Area  
Built-in wardrobes with window to rear and leading to;

En-Suite  
Fitted with a three-piece suite and comprising of a double shower cubicle, wash hand basin, low-level-WC and window to rear.

Bedroom 2 - 10'0" x 11'2" (3.06m x 3.41m)  
Built-in wardrobe with window to rear.

Family Bathroom  
Fitted with a four-piece suite and comprising of a double shower, bath, wash hand basin, low-level-WC and window to rear.





TOTAL FLOOR AREA: 2368 sq.ft. (220.0 sq.m.) approx.

Whilst every attempt has been made to ensure the accuracy of the floorplan contained here, measurements of doors, windows, rooms and any other items are approximate and no responsibility is taken for any error, omission or mis-statement. This plan is for illustrative purposes only and should be used as such by any prospective purchaser. The services, systems and appliances shown have not been tested and no guarantee as to their operability or efficiency can be given.

Made with Metropix ©2025

Bedroom 5 - 9'10" x 8'11" (3.00m x 2.73m)  
Window to front.

## Second Floor

Bedroom 3 - 11'7" x 17'5" + Wardrobe (3.54m x 5.32m + Wardrobe)  
Full width built-in wardrobe with window to front.

Jack & Jill Bathroom  
Fitted with a three-piece suite and comprising of a shower cubicle, wash hand basin, low-level-WC and window to rear.

Bedroom 4 - 9'11" x 22'7" (3.02m x 6.89m)  
Window to front.

## Outside

The private rear enclosed garden offers a secluded seated patio area with laid lawn to rear. The bottom of the garden also offers a spacious seated decking area. Situated on a corner plot, the front of the property also provides parking for multiple cars.

## Double Garage

Two up and over roller doors to front with side door providing direct access from the garden.

To view this property call Sharman Quinney on:  
**01487 710345**

# Selling your property?

Contact us to arrange a **FREE** home valuation.

 01487 710345

 17 Great Whyte, Ramsey, HUNTINGDON,  
Cambridgeshire, PE26 1HG

 ramsey@sharmanquinney.co.uk

 [www.sharmanquinney.co.uk](http://www.sharmanquinney.co.uk)



 SCAN ME



Sharman Quinney Holdings Limited is registered in England and Wales under company number 4174227, Registered Office is Cumbria House, 16-20 Hockliffe Street, Leighton Buzzard, Bedfordshire, LU7 1GN. VAT Registration Number is 500 2481 05.

1: These particulars do not constitute part or all of an offer or contract. 2: The measurements indicated are supplied for guidance only and as such must be considered incorrect. 3: Potential buyers are advised to recheck the measurements before committing to any expense. 4: Sharman Quinney has not tested any apparatus, equipment, fixtures, fittings or services and it is the buyers interests to check the working condition of any appliances. 5: Sharman Quinney has not sought to verify the legal title of the property and buyers must obtain verification from their legal representative. 6: Intending purchasers will be asked to produce identification documentation at a later stage and we would ask your co-operation in order that there will be no delay in agreeing the sale. Ref: RAM204638 - 0003

