



MANTILLA ROAD, SW17

£750,000

- Ground Floor Maisonette
- 2 Double Bedrooms
- Period Charm
- Sought After Location
- Tooting Bec Common
- South Facing Garden





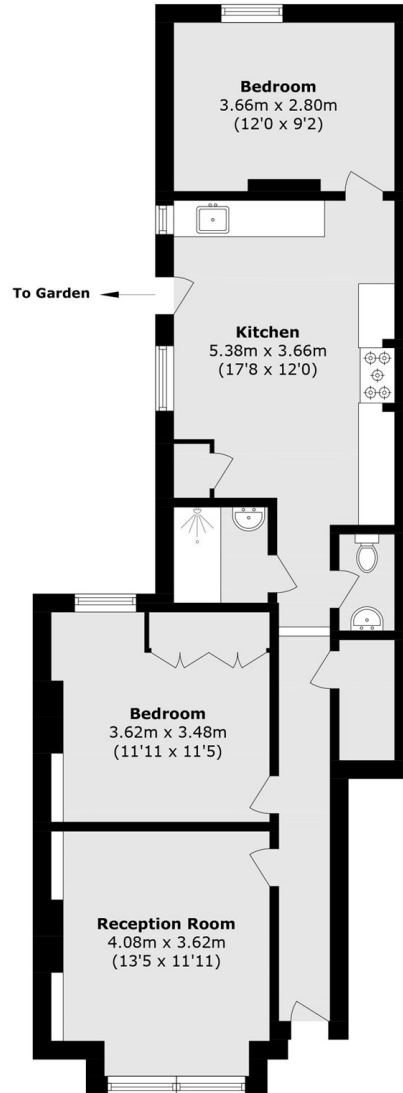
ABOUT THE HOME

We have a gorgeous and stylish ground floor Victorian period maisonette located in a sought after area of Tooting Bec. This property is easy on the eye and beautifully presented throughout and has a authentic balance of contemporary design and period charm. Unlike other ground floor flat, this has an abundance of natural light throughout the kitchen/diner and main living area. The reception room and kitchen offers is an amazing living space, perfect for entertaining and high quality living. Both bedrooms are full doubles and is an extremely attractive size with a stunning contemporary bathroom. Lastly, this property comes with an impressive, large, landscaped and grass south-facing garden.

Mantilla Road is just minutes from Tooting Bec Common and Tooting Bec underground Station which gives quick access to central London. Balham can be reached in about 15 minutes via an attractive walk through Bec Common.







Total area (approx): 72.3 sq. m (778.2 sq. ft)

JACKSONS TOOTING

3 Upper Tooting Road, London,
SW17 7TS
Sales: 020 8487 3175
Lettings: 020 8487 3176

Energy Rating: We aim to make our particulars both accurate and reliable. However they are not guaranteed; nor do they form part of an offer or contract. If you require clarification on any points then please contact us, especially if you're traveling some distance to view. Please note that appliances and heating systems have not been tested and therefore no warranties can be given as to their good working order.