



Petworth Close, Market Deeping, PETERBOROUGH
£420,000 Freehold

**Sharman
Quinney**

Key Features



- Detached House
- Study
- Utility Room
- Four Bedrooms
- Refitted Ensuite

To the ground floor there is a study, lounge, kitchen dining room, extended family room and utility room. To the first floor there are four bedrooms, master with recently refitted ensuite and a family bathroom. Outside the double garage has been converted into a gym and bar area opening onto the enclosed rear garden. Viewing of this home is very highly recommended.

Accommodation Includes

Front door to:

Entrance Hall

Radiator, stairs to first floor and landing, understairs storage cupboards.

Study

2.60m x 1.75m (8'6" x 5'9"). Two x windows to front aspect, radiator.



Lounge

3.25m x 4.48m (10'8" x 14'8"). Two windows to front aspect, radiator, double doors opening to:

Kitchen Dining Room

7.70m x 3.10m (25'3" x 10'2"). Comprising a range of base and eye level units with worktops over, plumbing for dishwasher, sink, built in oven and grill, electric hob and extractor, space for fridge freezer, window to rear.

Family Room/Play Room

4.55m x 3.25m (14'11" x 10'8"). French doors opening to rear garden.

Inner lobby

Eye and base level unit with worktop over, door to side.

Cloakroom/Utility

2.35m x 1.75m (7'9" x 5'9"). Base and eye level units, plumbing for washing machine, space for tumble dryer, heated towel rail, wc, window to side.

Stairs to first floor and landing

Loft access, airing cupboard.

Bedroom One

3.00m x 3.65m (9'10" x 12'). Window to front aspect, radiator built in double wardrobe.

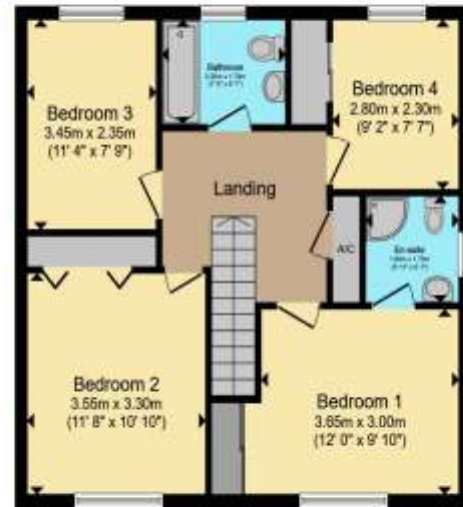
Ensuite

Refitted and comprising of shower cubicle, wc, sink with drawers below, heated towel rail, window to side.





Ground Floor



First Floor

Total floor area 135.8 m² (1,462 sq.ft.) approx

This floor plan is for illustrative purposes only. It is not drawn to scale. Any measurements, floor areas (including any total floor area), openings and orientation are approximate. No details are guaranteed, they cannot be relied upon for any purpose and they do not form part of any agreement. No liability is taken for any error, omission or misstatement. A party must rely upon its own inspection(s). Powered by www.propertybox.io



Bedroom Two
3.55m x 3.30m (11'8" x 10'10"). Window to front aspect, radiator, double wardrobe.

Bedroom Three
2.35m x 3.45m (7'9" x 11'4"). Window to rear aspect, radiator.

Bedroom Four
2.30m x 2.80m (7'7" x 9'2"). Window to rear aspect, radiator, double wardrobe.

Family Bathroom
Bathroom with three piece suite comprising panel bath with electric shower over, wc, pedestal wash hand basin, heated towel rail, window to rear aspect.

Outside
The rear garden is laid to lawn with patio seating area and brick wall surround with side gate access to both sides. One side of the double garage has been converted into a gym and bar area with French doors opening to the rear garden. A driveway provides double width parking.

To view this property call Sharman Quinney on:
01778 343322

Selling your property?

Contact us to arrange a **FREE** home valuation.

 01778 343322

 25 Market Place, Market Deeping,
PETERBOROUGH, Cambridgeshire, PE6 8EA

 marketdeeping@sharmanquinney.co.uk

 www.sharmanquinney.co.uk



 SCAN ME



Sharman Quinney Holdings Limited is registered in England and Wales under company number 4174227, Registered Office is Cumbria House, 16-20 Hockliffe Street, Leighton Buzzard, Bedfordshire, LU7 1GN. VAT Registration Number is 500 2481 05.

1: These particulars do not constitute part or all of an offer or contract. 2: The measurements indicated are supplied for guidance only and as such must be considered incorrect. 3: Potential buyers are advised to recheck the measurements before committing to any expense. 4: Sharman Quinney has not tested any apparatus, equipment, fixtures, fittings or services and it is the buyers interests to check the working condition of any appliances. 5: Sharman Quinney has not sought to verify the legal title of the property and buyers must obtain verification from their legal representative. 6: Intending purchasers will be asked to produce identification documentation at a later stage and we would ask your co-operation in order that there will be no delay in agreeing the sale. Ref: MRD204603 - 0004

