



25 Penny Lane, Amesbury Salisbury SP4 7FQ

welcome to

Penny Lane, Amesbury Salisbury

Situated in a sought-after residential area of Amesbury, this well-presented three-bedroom semi-detached home offers spacious and versatile accommodation, making it an ideal purchase for first-time buyers, growing families, or investors alike.



Entrance Hall

Karndean floor, Radiator

Lounge

Front aspect double glazed window, Karndean floor, Under stair storage

Kitchen

Tile floor, Front aspect double glazed window, Space for fridge, Built in oven, Space for dishwasher, Electric hob, Extractor hood

Utility Room

Tiled floor, Space for washing machine, Boiler

Landing

Carpet, Loft hatch not boarded

Bedroom 1

Rear aspect double glazed window, Built in wardrobe, Carpet, Radiator

En Suite

Fully tiled, Toilet, Sink, Radiator, Rear aspect double glazed window

Bedroom 2

Front aspect double glazed window, Carpet, Built in wardrobe, Radiator

Bedroom 3

Front aspect double glazed window, Radiator, Carpet, Storage cupboard

Bathroom

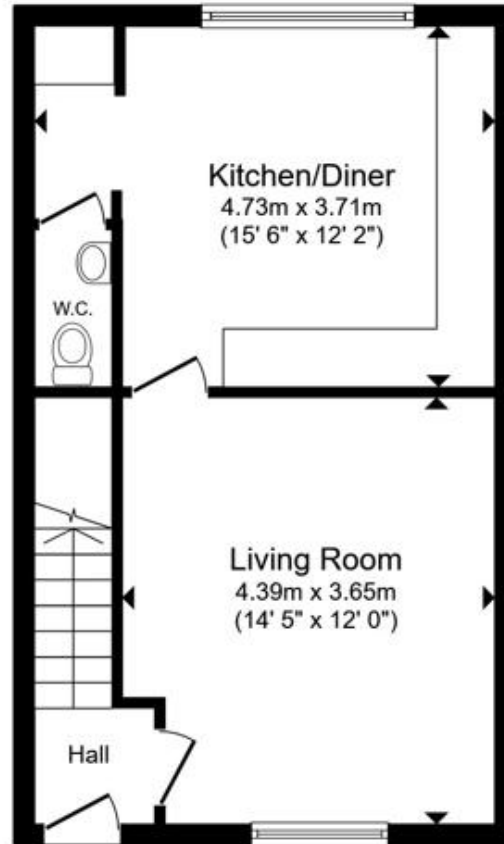
Bath, Shower, Toilet, Sink, Side aspect double glazed window, Heated towel rail

Rear Garden

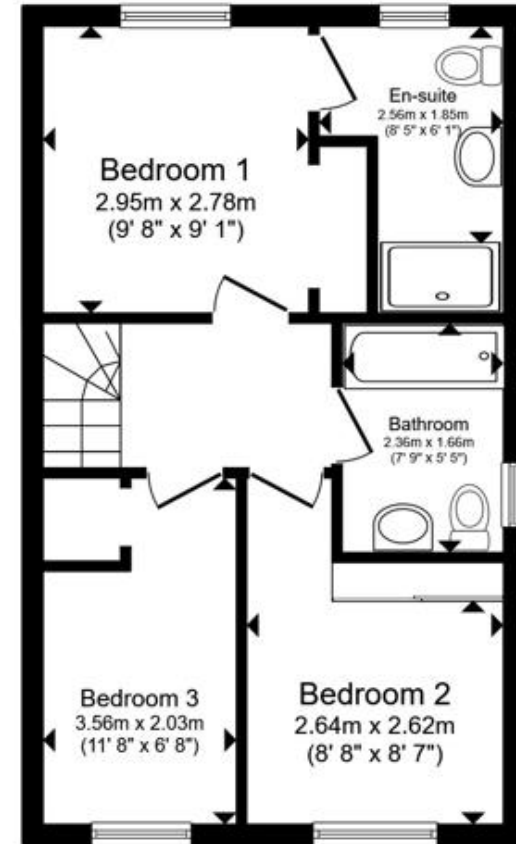
Two tier garden, Side and rear access

Parking

Garage and two car driveway



Ground Floor



First Floor

Total floor area 77.6 m² (835 sq.ft.) approx

This floor plan is for illustrative purposes only. It is not drawn to scale. Any measurements, floor areas (including any total floor area), openings and orientation are approximate. No details are guaranteed, they cannot be relied upon for any purpose and they do not form part of any agreement. No liability is taken for any error, omission or misstatement. A party must rely upon its own inspection(s). Powered by www.propertybox.io



view this property online fox-and-sons.co.uk/Property/AME105976



welcome to

Penny Lane, Amesbury Salisbury

- 3 Bedroom Semi-Detached Property
- Modern Kitchen
- Driveway and Garage
- Enclosed Rear Garden
- Sought After Area of Amesbury

Tenure: Freehold EPC Rating: B
Council Tax Band: D

£325,000



Please note the marker reflects the
postcode not the actual property

view this property online fox-and-sons.co.uk/Property/AME105976



Property Ref:
AME105976 - 0004

1. MONEY LAUNDERING REGULATIONS Intending purchasers will be asked to produce identification documentation at a later stage and we would ask for your co-operation in order that there is no delay in agreeing the sale. 2. These particulars do not constitute part or all of an offer or contract. 3. The measurements indicated are supplied for guidance only and as such must be considered incorrect. Potential buyers are advised to recheck measurements before committing to any expense. 4. We have not tested any apparatus, equipment, fixtures or services and it is in the buyers interest to check the working condition of any appliances. 5. Where an EPC, or a Home Report (Scotland only) is held for this property, it is available for inspection at the branch by appointment. If you require a printed version of a Home Report, you will need to pay a reasonable production charge reflecting printing and other costs. 6. We are not able to offer an opinion either written or verbal on the content of these reports and this must be obtained from your legal representative. 7. Whilst we take care in preparing these reports, a buyer should ensure that his/her legal representative confirms as soon as possible all matters relating to title including the extent and boundaries of the property and other important matters before exchange of contracts.


fox & sons



01980 624155



Amesbury@fox-and-sons.co.uk



49 Salisbury Street, AMESBURY, Wiltshire, SP4
7AW



fox-and-sons.co.uk