



Westmark, KING'S LYNN, PE30 4RG



welcome to

Westmark, KING'S LYNN

Located close to The Queen Elizabeth Hospital and local amenities is this well presented three bedroom end terrace house. Viewing highly recommended,



Entrance Door To:-

Entrance Hall

Stairs to first floor, radiator, storage cupboard

Cloakroom

Low level WC, wash hand basin, double glazed window, radiator

Lounge

11' 9" x 15' (3.58m x 4.57m)

Double glazed window radiator

Kitchen/ Breakfast

17' 9" x 9' 3" (5.41m x 2.82m)

Range of base and wall units, roll edge work top, inset sink with mixer tap over, built-in double oven, gas hob, extractor over, space for fridge freezer, integrated dishwasher, radiator, double glazed window, double glazed door to:-

Rear Lobby

Space and plumbing for washing machine, double glazed door to rear

First Floor Landing

Radiator, loft access, storage cupboard

Bedroom One

12' 9" x 11' 9" (3.89m x 3.58m)

Double glazed window, radiator, built-in cupboard

Bedroom Two

11' 9" x 10' 9" (3.58m x 3.28m)

Double glazed window, radiator, built-in cupboard

Bedroom Three

8' 9" x 7' 9" (2.67m x 2.36m)

Double glazed window radiator

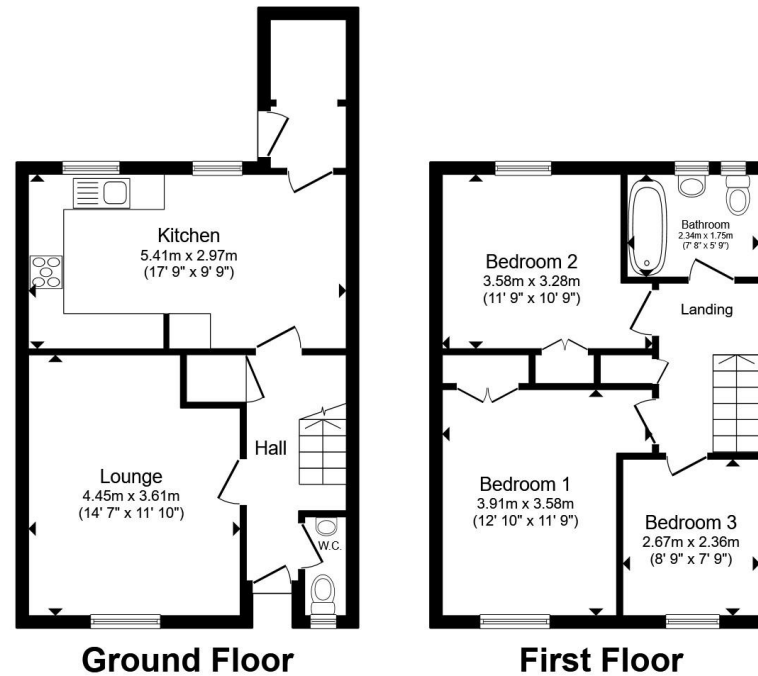
Bathroom

7' 8" x 5' 9" (2.34m x 1.75m)

L-shaped bath with shower mixer tap and shower screen, low level WC, wash hand basin, double glazed window, heated towel rail

Outside

Enclosed rear garden laid to slab for easy maintenance with rear access gate.



Total floor area 84.1 m² (905 sq.ft.) approx

This floor plan is for illustrative purposes only. It is not drawn to scale. Any measurements, floor areas (including any total floor area), openings and orientation are approximate. No details are guaranteed, they cannot be relied upon for any purpose and they do not form part of any agreement. No liability is taken for any error, omission or misstatement. A party must rely upon its own inspection(s). Powered by www.propertybox.io


william
h brown



view this property online williamhbrown.co.uk/Property/KLN119252



welcome to

Westmark, KING'S LYNN

- Ideal First Time Buy or Investment Opportunity
- Close to the Queen Elizabeth Hospital
- End Terrace House
- Three Bedrooms
- Breakfast Kitchen

Tenure: Freehold EPC Rating: C
Council Tax Band: A

offers over

£175,000



Please note the marker reflects the postcode not the actual property

view this property online [williambrown.co.uk/Property/KLN119252](https://www.williambrown.co.uk/Property/KLN119252)



Property Ref:
KLN119252 - 0006

1. MONEY LAUNDERING REGULATIONS Intending purchasers will be asked to produce identification documentation at a later stage and we would ask for your co-operation in order that there is no delay in agreeing the sale. 2. These particulars do not constitute part or all of an offer or contract. 3. The measurements indicated are supplied for guidance only and as such must be considered incorrect. Potential buyers are advised to recheck measurements before committing to any expense. 4. We have not tested any apparatus, equipment, fixtures or services and it is in the buyers interest to check the working condition of any appliances. 5. Where an EPC, or a Home Report (Scotland only) is held for this property, it is available for inspection at the branch by appointment. If you require a printed version of a Home Report, you will need to pay a reasonable production charge reflecting printing and other costs. 6. We are not able to offer an opinion either written or verbal on the content of these reports and this must be obtained from your legal representative. 7. Whilst we take care in preparing these reports, a buyer should ensure that his/her legal representative confirms as soon as possible all matters relating to title including the extent and boundaries of the property and other important matters before exchange of contracts.

William H Brown is a trading name of Sequence (UK) Limited which is registered in England and Wales under company number 4268443, Registered Office is Cumbria House, 16-20 Hockliffe Street, Leighton Buzzard, Bedfordshire, LU7 1GN. VAT Registration Number is 500 2481 05.



william h brown



01553 771337



KingsLynn@williambrown.co.uk



40-42 King Street, KING'S LYNN, Norfolk, PE30 1ES



[williambrown.co.uk](https://www.williambrown.co.uk)