

est 1979

Jeremy
Leaf & Co.



Ashbourne Court, Ashbourne Close, Woodside Park

£1,800 Per Month

- Two double bedrooms
- Bathroom
- Balcony
- Available now
- Within approx. 400ft of tube station
- Spacious lounge
- EPC Rating C
- Council tax band D

863 High Road, London, N12 8PT
020 8446 4295

property@jeremyleaf.co.uk
<https://www.jeremyleaf.co.uk/>

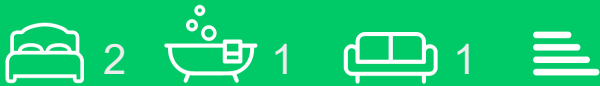
Ashbourne Court, Ashbourne Close, Woodside Park, N12 8SA

Located approx. 400ft from Woodside Park Underground station, this two bedroom first floor flat benefits from a spacious lounge, two good sized double bedrooms and a balcony. The property is within 0.3 miles of North Finchley's shopping and transport amenities.

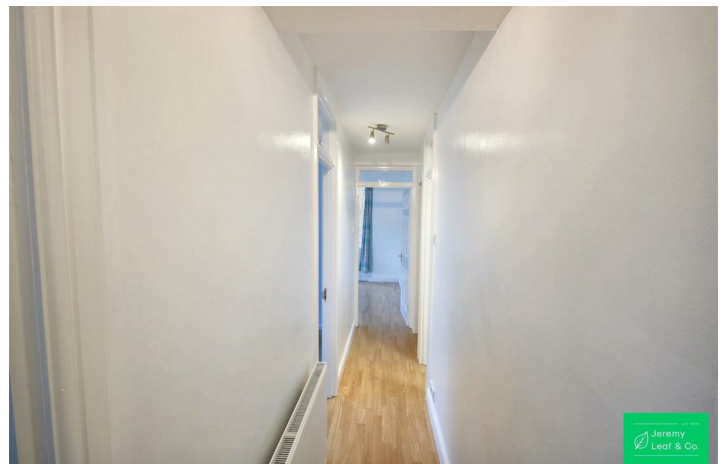
AVAILABLE NOW.

Unfurnished.

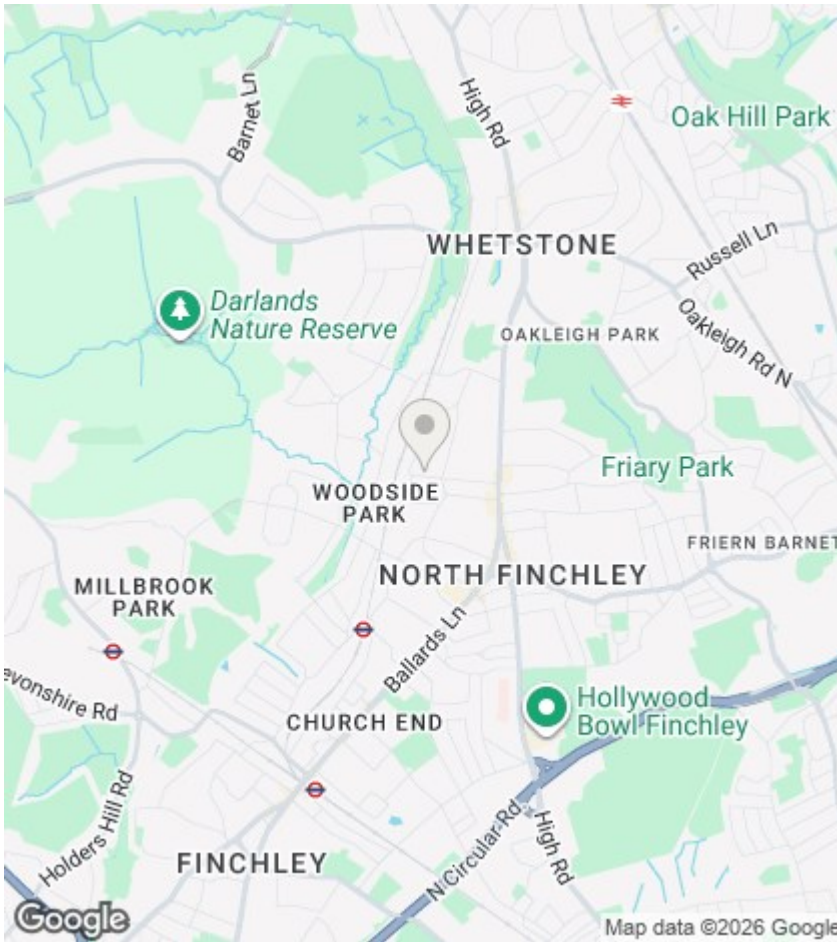
Council tax band D.



Council Tax Band: D







Directions

Viewings

Viewings by arrangement only. Call 020 8446 4295 to make an appointment.

EPC Rating:

Energy Efficiency Rating		Current	Potential
Very energy efficient - lower running costs			
(92 plus) A			
(81-91) B			
(69-80) C			
(55-68) D			
(39-54) E			
(21-38) F			
(1-20) G			
Not energy efficient - higher running costs			
England & Wales		EU Directive 2002/91/EC	