



**Penthouse, Waterside Court, The Colonnade, Maidenhead SL6 1DL**

**welcome to**

## **Penthouse, Waterside Court, The Colonnade, Maidenhead**

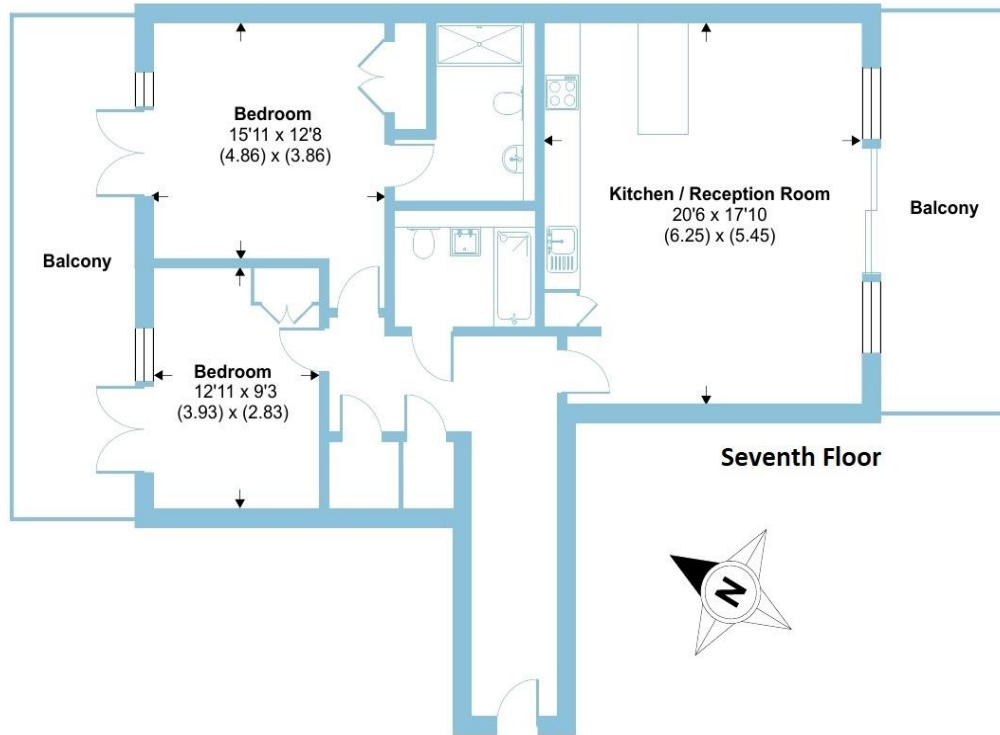
A stunning penthouse apartment built by award winning developers Shanly Homes, perfectly positioned in the heart of the town centre, surrounded by an array of restaurants, shops & bars and within easy reach of the station, providing swift access into London. This impressive home boasts a large open-plan living area with a contemporary fitted kitchen, designed to maximise both space and natural light. Expansive windows and doors flood the interior with sunshine, creating a wonderfully bright and airy atmosphere throughout. A standout feature is the private balconies, offering an inviting space to relax and enjoy views over the town and the principal bedroom features a stylish en-suite shower room, while the second double bedroom is served by a sleek modern family bathroom. Combining modern design with a superb central location, this penthouse offers the perfect blend of style, comfort and convenience. As an added benefit, there is secure underground parking and the building is accessed via a secure entry-system.



# Waterside Court, The Colonnade, Maidenhead, SL6

Approximate Area = 979 sq ft / 91 sq m

For identification only - Not to scale



Floor plan produced in accordance with RICS Property Measurement 2nd Edition, Incorporating International Property Measurement Standards (IPMS2 Residential). © nichecom 2025. Produced for Barnard Marcus. REF: 1337098



welcome to

## Penthouse, Waterside Court

- STUNNING PENTHOUSE APARTMENT
- TWO BEDROOMS
- TWO BATHROOMS
- SECURE ENTRANCE WITH LIFT ACCESS
- TWO PRIVATE BALCONIES
- UNDERGROUND PARKING
- TOWN CENTRE LOCATION
- EASY ACCESS TO STATION

Tenure: Leasehold EPC Rating: B

Council Tax Band: C Service Charge: 2500.00

Ground Rent: 610.00

This is a Leasehold property with details as follows; Term of Lease 250 years from 01 Jul 2020. Should you require further information please contact the branch. Please Note additional fees could be incurred for items such as Leasehold packs.

# £575,000



Please note the marker reflects the postcode not the actual property

check out more properties at [rogerplatt.co.uk](http://rogerplatt.co.uk)



Property Ref:  
MHD123357 - 0004

1. MONEY LAUNDERING REGULATIONS Intending purchasers will be asked to produce identification documentation at a later stage and we would ask for your co-operation in order that there is no delay in agreeing the sale. 2. These particulars do not constitute part or all of an offer or contract. 3. The measurements indicated are supplied for guidance only and as such must be considered incorrect. Potential buyers are advised to recheck measurements before committing to any expense. 4. We have not tested any apparatus, equipment, fixtures or services and it is in the buyers interest to check the working condition of any appliances. 5. Where an EPC, or a Home Report (Scotland only) is held for this property, it is available for inspection at the branch by appointment. If you require a printed version of a Home Report, you will need to pay a reasonable production charge reflecting printing and other costs. 6. We are not able to offer an opinion either written or verbal on the content of these reports and this must be obtained from your legal representative. 7. Whilst we take care in preparing these reports, a buyer should ensure that his/her legal representative confirms as soon as possible all matters relating to title including the extent and boundaries of the property and other important matters before exchange of contracts.

Roger Platt is a trading name of Sequence (UK) Limited which is registered in England and Wales under company number 4268443, Registered Office is Cumbria House, 16-20 Hockliffe Street, Leighton Buzzard, Bedfordshire, LU7 1GN. VAT Registration Number is 500 2481 05.

  
roger platt



01628 773333



Maidenhead@rogerplatt.co.uk



25-29 Queen Street, MAIDENHEAD, Berkshire,  
SL6 1NB



[rogerplatt.co.uk](http://rogerplatt.co.uk)