



WARISH HALL PARK



WARISH HALL PARK

TAKELEY

Discover a distinctive collection of thoughtfully designed two, three, four and five-bedroom traditional homes in the heart of the picturesque village of Takeley, Essex.

Nestled on the edge of ancient woodland and rolling countryside, Warish Hall Park blends sympathetically into its surroundings to create an amazing place to live and belong. Each home features a fully inclusive premium specification and is designed for easy maintenance and energy efficiency.

Carefully crafted by multi-award-winning Weston Homes, this is a place you'll love to come home to.


**Weston
Homes**

THOUGHTFULLY DESIGNED HOMES

with the environment in mind

Shaped by thoughtful design, homes sit naturally within their surroundings, with carefully chosen materials and finishes, reflecting the character of the local area and Weston Homes commitment to quality. A central green public space and play area creates a place to relax, meet neighbours and enjoy the outdoors.





The Weston Homes **DIFFERENCE**

Our homes at Warish Hall Park are specifically designed with you in mind. As well as being committed to help you save money on energy bills, Weston Homes can also help you do your bit to save the planet. There are many benefits to buying a property from Weston Homes.

- Weston Homes' **fully inclusive premium specification** means you can move in and start enjoying your new lifestyle from the moment you unlock the door
- You'll be the **very first homeowner** and won't inherit any DIY disasters from a previous occupier – and you can choose from our wide range of designer options, all within the price of your new home*
- **Our homes are sustainable** and built with the environment in mind, saving energy, water and your pocket
- Carefully considered flexible living spaces, with **large windows and light-filled rooms** – perfect for modern day living
- Enjoy peace of mind with a **10-year new homes warranty**, including a two-year warranty from Weston Homes
- We create new communities; places to **make a genuine difference** to the lives of our customers
- There are **no forward chains** which takes away the uncertainty when buying an older home
- **Superfast broadband** makes working from home a breeze
- We are a **family-owned business**. All our homes are built with passion and delivered with pride

We have **helped hundreds of buyers** purchase a new home who didn't think they could. If there is a way you can buy, **we will find it.**

* Subject to stage of construction



Voted BRITAIN'S BEST HOUSEBUILDER

Defining excellence in homebuilding

At Weston Homes, we live by a vision to create and construct homes and communities for tomorrow. That dedication was recognised in 2025 with an incredible haul of industry awards, cementing our reputation as one of the UK's leading developers.

We were thrilled to be named Housebuilder of the Year at the prestigious 2025 WhatHouse? Awards. Often called the 'Oscars' of the industry, this top honour is a testament to our commitment to quality, innovation and our dedicated customer service.

Because we design with you in mind, we are especially proud to also have been voted Private Developer of the Year at the First Time Buyer Readers' Awards 2025 for the fourth consecutive year, celebrating our mission to make the dream of homeownership a reality for everyone.

When you choose Weston Homes, you aren't just buying a home; you're investing in an award-winning housebuilder backed by a team dedicated to excellence.



“

Building new homes and communities has been my passion for nearly four decades. Seeing customers move into their new homes and witnessing the positive difference it makes to their lives is incredibly rewarding, which is why customer satisfaction is our number one priority; our reputation and the ability to keep building depends on it. Our friendly sales and customer service teams are on hand to provide expert guidance at every stage – from your first enquiry through to aftercare.

We look forward to welcoming you to Warish Hall Park, Takeley and everything this Essex village has to offer. Explore our fantastic show home to experience Weston Homes' unique, fully-inclusive luxurious specification. This truly sets us apart and is why we are a multi-award-winning housebuilder, with a commitment to quality and excellence.

”

BOB WESTON, CHAIRMAN





Flitch Way



A place with **EVERYTHING YOU NEED**

Takeley enjoys a rich tapestry of natural open spaces and attractions for all the family, including pretty trails and riverside walks to explore. The nearby Flitch Way, which stretches for 15 miles along a historic former railway line, links Braintree to Bishop's Stortford and provides a flat, traffic-free route ideal for dedicated cyclists and weekend walkers. Just a short distance away, the River Roding winds through the landscape, providing a tranquil space for exploration. These local treasures are complemented by Hatfield Forest, a 996-acre National Trust icon and medieval hunting forest which is a playground for all ages. Wander through the winding woodland trails, hire a

boat on the lake, or enjoy the seasonal open-air family theatre near the restored 18th-century Shell House.

The village is home to a charming Grade I Listed church with 12th-century origins and is testament to the area's long history. For football fans, a well-kept sports field – home ground to Takeley FC – is a vibrant place on matchdays and for hosting community events. Takeley Sports & Social Club, a welcoming local cornerstone, hosts regular live entertainment for all the family.

While the setting feels authentically rural, Takeley is designed for effortless modern living with everyday essentials including a Tesco Express, pharmacy and post office. Enjoy great cuisine in local eateries including the Lion & Lamb pub, serving delicious food and a hearty welcome.



Shell House, Hatfield Forest



DISTINCT PLACES

to explore

For a more cosmopolitan experience, vibrant Bishop's Stortford is less than 20 minutes by car and is well served by a Waitrose, Sainsbury's and a host of familiar high street shops and independent boutiques. It has established itself as a premier destination for gastronomes. Spend an evening sampling the list at Paisá Wine Bar, browsing the artisanal stalls of the Eat17 food market, or dining at Pircio, a vibrant Italian and Mediterranean restaurant uniquely housed within a converted chapel that promises a lively atmosphere.

Golfers are well catered for, with Bishop's Stortford Golf Club an 11-minute car journey. Slightly further afield, Manor of Groves Golf Club, Canons Brook Golf Club and Hanbury Manor Golf Club offer beautifully maintained greens within 25 minutes by car. Beyond the immediate area, the neighbouring towns of Great Dunmow, Braintree and Harlow each offer a distinct personality, and the medieval city of Chelmsford has a plethora of shops, bars, restaurants and leisure activities. From vibrant high streets and cultural landmarks to lush public parks and premium fitness facilities, the region provides a diverse and fulfilling lifestyle, ensuring that every convenience is never far away.

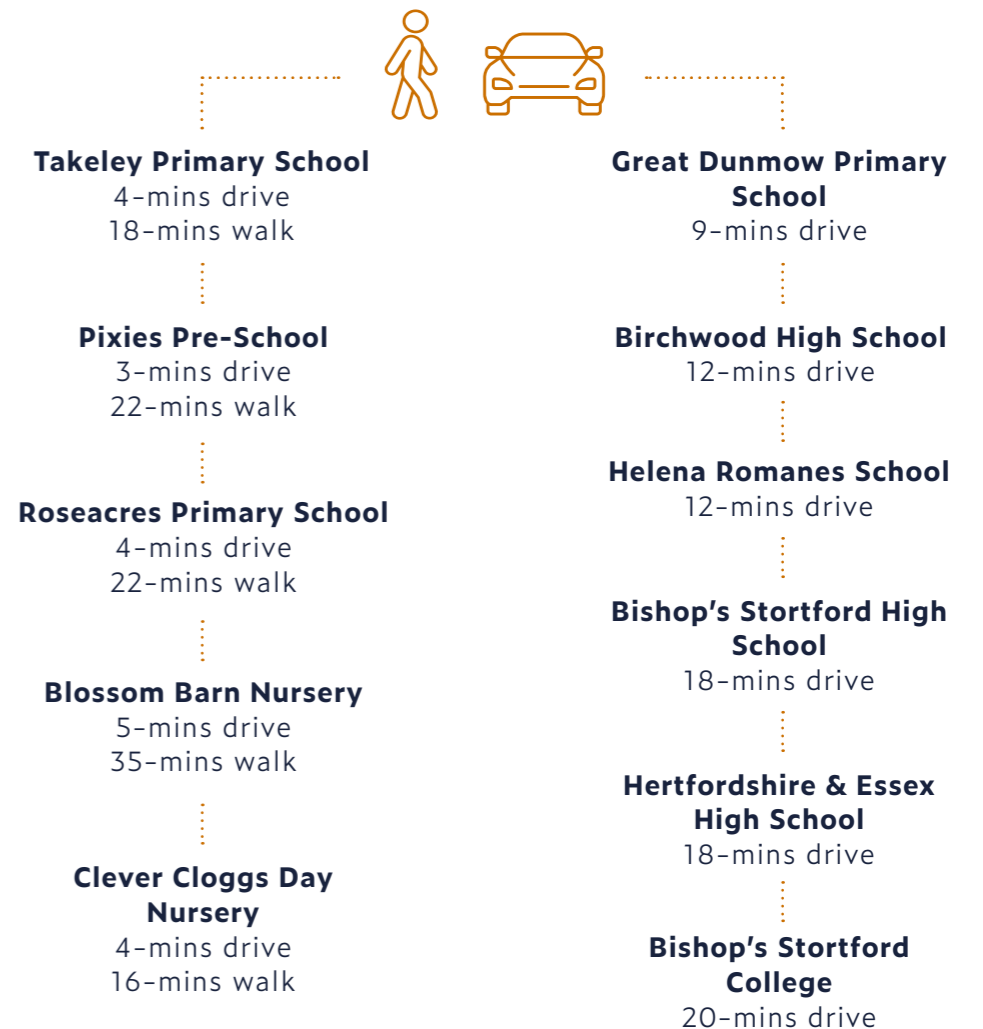




EDUCATION

at its best

The area is perfectly placed for families seeking exceptional education at every stage. Local pre-schools, including Blossom Barn Nursery, rated 'Outstanding' by Ofsted, provide a nurturing start. Takeley Primary School and Roseacres Primary School – both rated 'Good' – are highly regarded and much loved by local families. For older children, Bishop's Stortford offers a wealth of options. Bishop's Stortford High School and Herts & Essex High School, both rated 'Outstanding', are just 18 minutes away by car, while the esteemed Bishop's Stortford College, a top-rated private school, is only 20 minutes from home. Higher education is equally accessible, with the University of Hertfordshire, University of Essex and Writtle University College all within an easy commute – making Warish Hall Park an ideal base for both family life and academic excellence.



Well CONNECTED

Wherever you need to be, Warish Hall Park is ideally placed for transport connections. The A120 is on your doorstep and connects you to the M11, M25 and beyond with ease. Stansted Airport Train Station is just a six-minute drive from home, offering a frequent service to London Liverpool Street in 46 minutes. London Stansted Airport also offers a world of international travel at your fingertips, making spontaneous weekend escapes or sun-drenched overseas holidays a breeze.

By Car

From Warish Hall Park



Stansted Airport
6 mins

Great Dunmow
10 mins

Bishop's Stortford
18 mins

Braintree
22 mins

Harlow
28 mins

Chelmsford
33 mins

By Train

From Stansted Airport train station



Bishop's Stortford
8 mins

Harlow Town
15 mins

Cambridge
29 mins

Tottenham Hale
32 mins

London Liverpool Street
46 mins

Stratford
52 mins
(Change at Tottenham Hale)

- | | | |
|-------------------------------|----------------------------|-----------------------------|
| 1 Takeley Primary School | 5 Lion & Lamb Pub | 9 Takeley Football Club |
| 2 Tesco Express | 6 Priors Green Cafe Bistro | 10 Takeley Sports Field |
| 3 Priors Green Community Hall | 7 Yogi Pharmacy | 11 Roseacres Primary School |
| 4 Clever Cloggs Day Nursery | 8 Four Ashes Pub | |



Distances from Google Maps and Trainline. Journey times are approximate.

The FINER POINTS

We believe your home should be anything but ordinary. Hand-selected finishes combined with thoughtful design, create truly original sophisticated, modern interiors.

Inside, you will discover a premium specification like no other. From contemporary designer kitchens to elegantly appointed bathrooms, every detail is included as standard with no hidden extras. This is an unrivalled lifestyle, where your sense of wellbeing is at the heart of every design choice.

Designer Kitchens

- Wide choice of designer units by Oakwood Kitchens*
- Choice of quartz stone worktops and splashbacks*
- Fascino under counter stainless steel sink
- Fascino instant boiling and chilled water tap
- Integrated stainless steel soap dispenser
- LED lighting under kitchen wall units

2 & 3 Bedroom Homes

Electrolux integrated appliances:

- Stainless steel electric fan oven
- Black ceramic electric hob
- Microwave
- Fridge/freezer
- Washer/dryer
- Dishwasher
- Stainless steel integrated chimney hood

4 & 5 Bedroom Homes

AEG integrated appliances:

- Pyrolytic single oven
- Combination microwave/oven
- Hob2Hood induction hob
- Hob2Hood ceiling recessed cooker hood
- Warming drawer to The Willow and The Mulberry only
- Fridge/freezer. Separate fridge and freezer to The Willow
- Dishwasher
- Wine cooler

Utility Rooms 4 & 5 Bedroom Homes

- Wide choice of designer units by Oakwood Kitchens*
- Choice of quartz stone worktops and splashbacks*
- AEG Freestanding washing machine
- AEG Freestanding tumble dryer

Bathrooms & En Suites

- Fascino digitally controlled Smart tap
- Smart Mirror with LED lighting, shaver socket, digital clock and de-mist pad
- Vanity units with integrated storage space in a choice of three finishes*
- Quartz stone worktop and splashback with mounted RAK Ceramics basin
- Arctic white shower trays and bathtubs in matt finish with sleek stainless steel waste cover. Freestanding baths to The Mulberry
- RAK Ceramics Hygiene+ WC with RAK Rimless™ pan and soft close ergonomic design seat
- Fascino Smart shower with integrated body-jets and digital control to shower rooms, and/or Fascino Smart bath with digital control to bathrooms
- Heated chrome towel rails
- Porcelain wall and floor tiles



Internal images are from previous Weston Homes show homes. Furniture, light fittings, window treatments and accessories are not included. Everything else is part of our premium, fully inclusive specification as standard. *Choices from Weston Homes' range, subject to the stage of construction and may vary from the images shown. Specifications are subject to change. †Subject to contract and connection by purchaser. Visit hyperoptic.com for details. ^Speak to a Sales Consultant for details of your chosen home.



The FINISHING TOUCHES

Decorative Finishes

- Walls and ceilings in a smooth white finish
- Timber staircase and spindles to two and three bedroom homes. Clamped glass balustrade to four and five bedroom homes
- Fitted wardrobes to principal bedroom in all homes except The Pine and The Willow which have a walk-in wardrobe with shelving and hanging rail. Fitted wardrobe to bedroom two in The Pine, The Willow and The Mulberry
- Light Oak or Ebony Oak engineered timber flooring to entrance hall, open plan living areas, kitchen and dining areas, cloakrooms, cupboards and ground floor study rooms
- Choice of carpets with underlay to bedrooms, separate living rooms, stairs, upper floor landings, study and linen cupboards. Anthracite matwell to ground floor entrance hall

Doors & Windows

- Anthracite grey uPVC front doors with polished chrome ironmongery and multi point locking system
- Forest internal doors with polished chrome ironmongery, with matching door-linings, architraves and skirtings
- High-efficiency windows and bi-fold garden doors finished in anthracite grey externally and white internally with white painted sills

Heating & Water

- Air Source Heat Pumps for central heating and hot water
- Radiators throughout
- Hot water storage tank

Construction Method

- Please visit our website for the construction method of your chosen home

Material Information

- For additional material information, please visit www.weston-homes.com/warish-hall-park

Electrical

- Downlights to kitchen, utility room, WC, bathroom, en suite and walk-in wardrobe; pendant fittings to living & dining room/area, study and bedrooms
- Television and telephone points to living area/room and principal bedroom
- USB double power sockets to kitchen and principal bedroom
- Smoke detectors to hall and landing; heat detector to kitchen
- External lighting to front and rear
- Hyperoptic superfast fibre broadband enabled with speeds of up to 1Gbps†
- Solar panel system with 6 to 10 panels^ depending on home

External Finishes

- Timber closeboard fence panels
- Turf and planting to front garden; turf to rear garden
- Paving to patios
- External power supply in garages
- Garage to selected homes with electrically controlled up and over door
- 7.2kW electric car charger

Sustainable Credentials

- Energy-Efficient: Built to the latest environmental standards utilising advanced construction techniques to create a superior thermal shell. This precision engineering means less energy is required to heat your home, providing a cosy, draught-free environment that protects both the planet and your bank account
- Water saving measures: dual flush toilets, digital temperature and flow control taps and showers
- Lighting: 100% low energy LED lighting
- EV: Dedicated parking with electric vehicle charging for every home, supporting a fossil-fuel-free future
- Hyperoptic full fibre broadband: superfast connectivity for work and play (subject to contract and connection by purchaser)



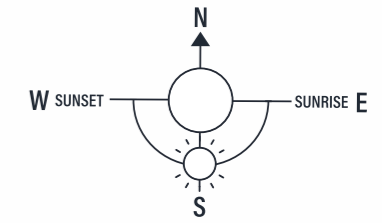
Internal images are from previous Weston Homes show homes. Furniture, light fittings, window treatments and accessories are not included. Everything else is part of our premium, fully inclusive specification as standard. *Choices from Weston Homes' range, subject to the stage of construction and may vary from the images shown. Specifications are subject to change. †Subject to contract and connection by purchaser. Visit hyperoptic.com for details. ^Speak to a Sales Consultant for details of your chosen home.





NEW HOMES

Elegantly planned, beautifully designed



 **The Ash**
2 bedroom semi-detached
Homes 6, 7, 8, 9, 10 & 11

 **The Elm**
3 bedroom semi-detached
Homes 18, 19, 26, 27, 28 & 29

 **The Birch**
3 bedroom detached
Home 5

 **The Oak**
4 bedroom detached
Homes 4, 22, 23, 25 & 30

 **The Pine**
4 bedroom detached
Homes 2 & 3

 **The Willow**
5 bedroom detached
Homes 20 & 24

 **The Mulberry**
5 bedroom detached
Homes 1 & 21

 **Affordable Homes**
Homes 12-17 & 31-40





Computer Generated Image

The Ash

**2 BEDROOM SEMI-DETACHED
Homes 6(h), 7, 8(h), 9, 10(h) & 11**

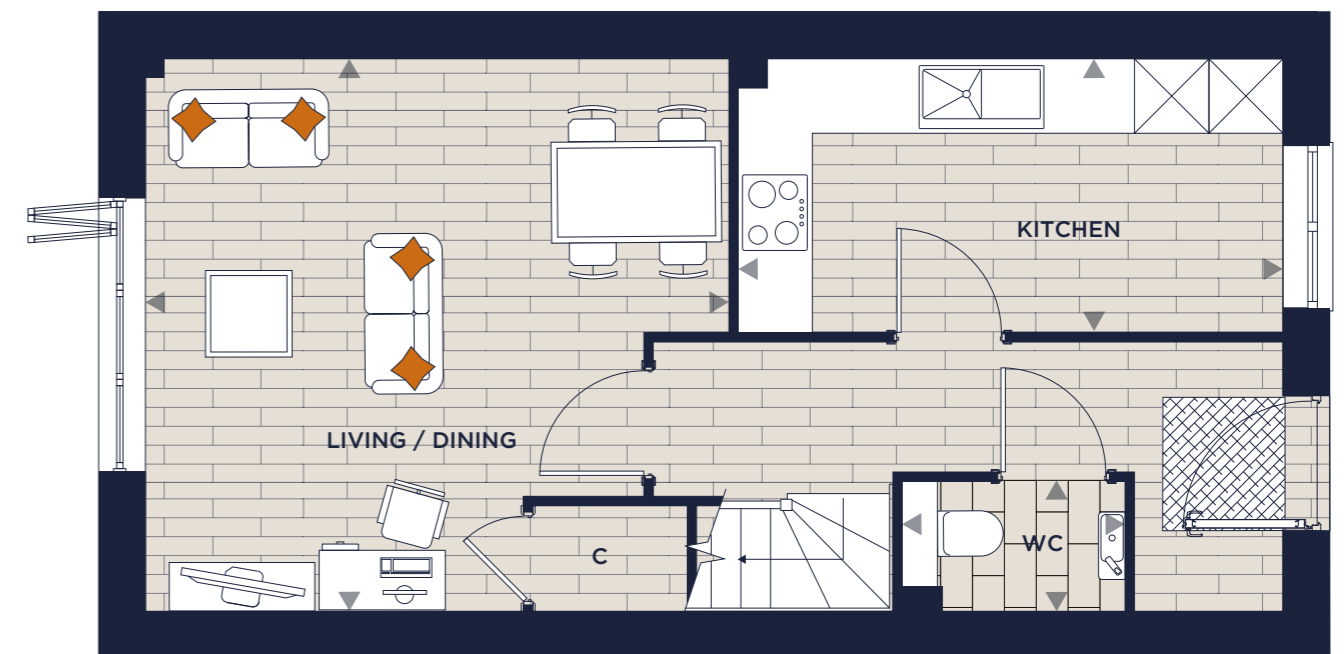
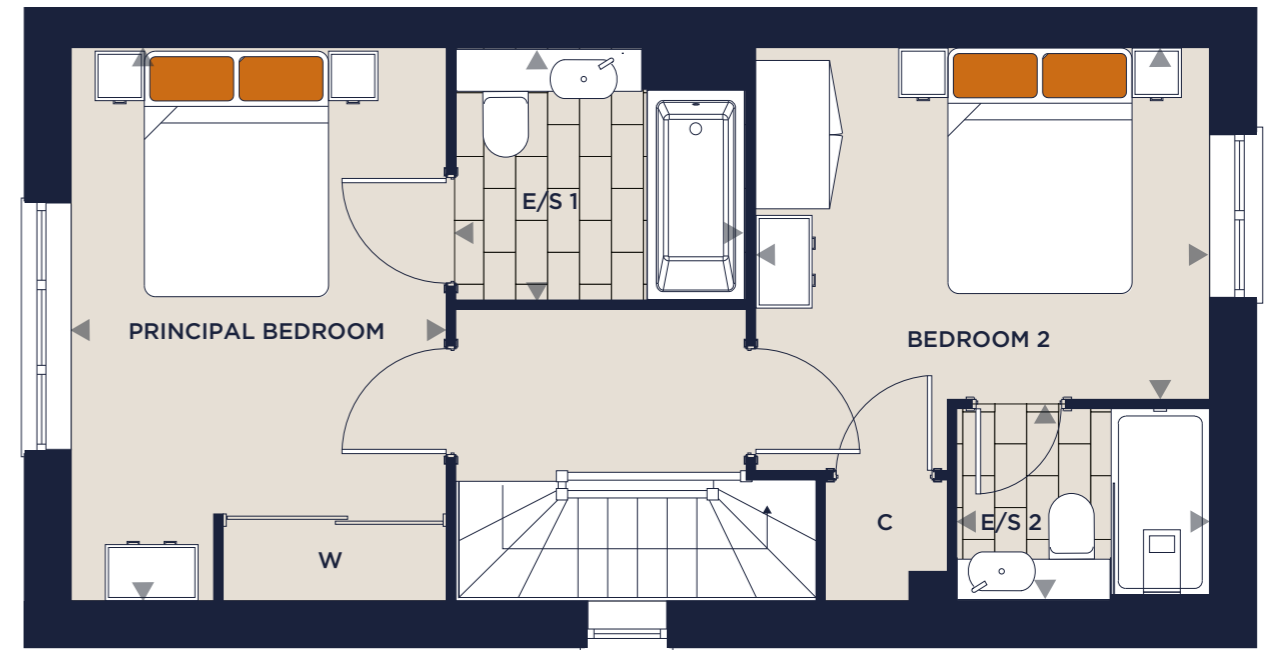
Overall Size: 82m² | 881ft²

An ideal starter home featuring a generous open-plan living and dining area with bi-fold doors to the private garden. The separate kitchen is finished to a high specification. Upstairs, both bedrooms benefit from en suite bathrooms, with the principal bedroom featuring mirrored fitted wardrobes.

Living/Dining	4.45m x 4.70m	14'7" x 15'5"
Kitchen	2.21m x 4.40m	7'3" x 14'5"
WC	1.80m x 1.04m	5'11" x 3'5"

Principal Bedroom	4.45m x 3.02m	14'7" x 9'11"
En Suite 1	2.34m x 2.03m	7'8" x 6'8"
Bedroom 2	2.83m x 3.66m	9'3" x 12'0"
En Suite 2	2.04m x 1.55m	6'8" x 5'1"

First Floor



Ground Floor

Floor plans, dimensions and configurations are included for guidance only, may be subject to revision during construction, please refer to current drawings with a Sales Consultant. Furniture is located in indicative positions.

All dimensions are within + or - 50mm/2 inches.

(h) - Handed homes, E/S - En Suite, C - Cupboard, W - Wardrobe. Dimensions taken from





Computer Generated Image

The Elm

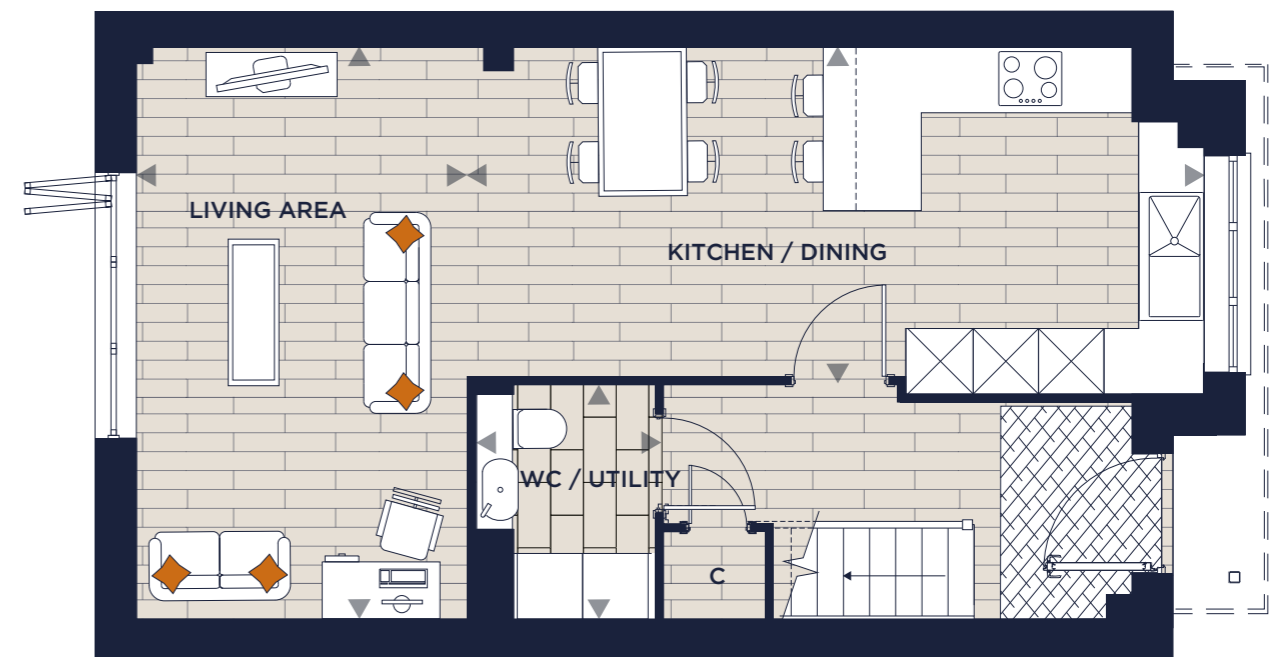
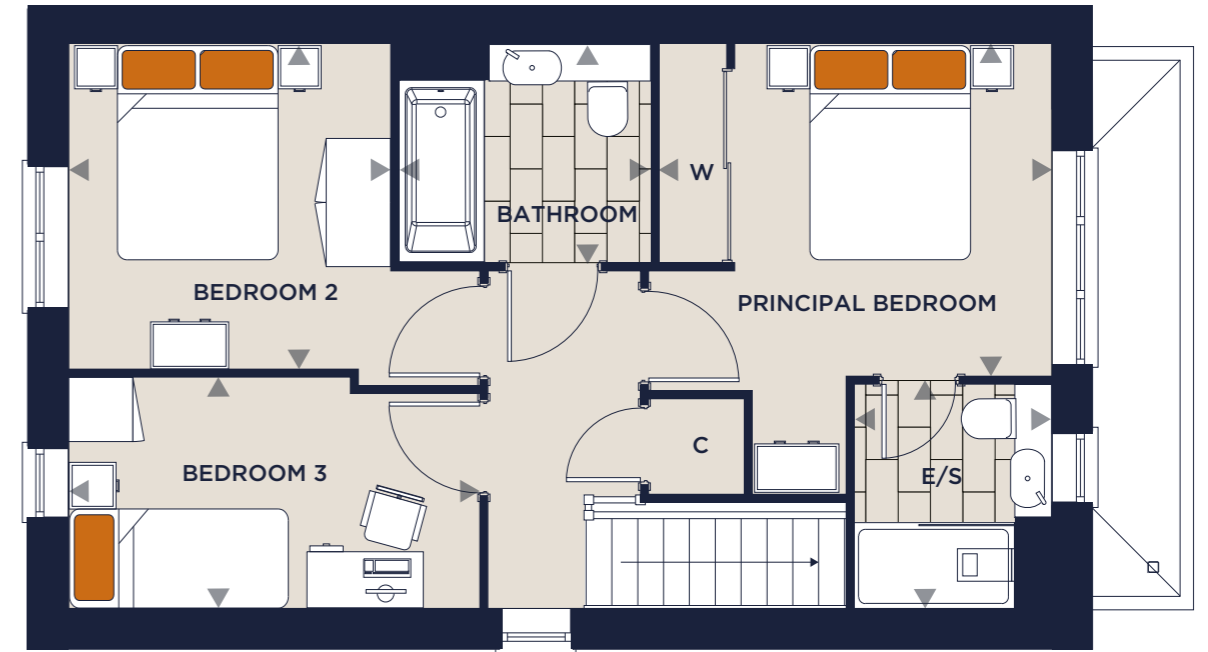
3 BEDROOM SEMI-DETACHED
Homes 18(h), 19, 26(h), 27, 28 & 29
 Overall Size: 98m² | 1054ft²

The highlight of this home is the open-plan kitchen, dining and living area, complete with a breakfast bar and bi-fold doors that lead to the garden. A separate utility room adds everyday convenience. On the first floor, there are three bedrooms, one with a fitted wardrobe and en suite, alongside a well-appointed family bathroom.

Living Area
 5.24m x 3.03m 17'2" x 9'11"
Kitchen/Dining
 3.02m x 6.75m 9'11" x 22'2"
WC/Utility
 2.14m x 1.65m 7'0" x 5'5"

Principal Bedroom
 3.08m x 3.64m 10'1" x 11'11"
En Suite
 2.08m x 1.83m 6'10" x 6'0"
Bedroom 2
 3.02m x 2.99m 9'11" x 9'10"
Bedroom 3
 2.14m x 3.82m 7'0" x 12'6"
Bathroom
 2.34m x 2.03m 7'8" x 6'8"

First Floor



Ground Floor

Floor plans, dimensions and configurations are included for guidance only, may be subject to revision during construction, please refer to current drawings with a Sales Consultant. Furniture is located in indicative positions. All dimensions are within + or - 50mm/2 inches.

(h) - Handed homes, E/S - En Suite, C - Cupboard, W - Wardrobe. Dimensions taken from





Computer Generated Image

The Birch

3 BEDROOM DETACHED Home 5

Overall Size: 97m² | 1041ft²

Expertly blending space and light, this welcoming home offers an exceptional layout. The ground floor features a generous kitchen and dining room, separate utility space, plus a spacious living room with bi-fold doors onto the garden. The first floor comprises a large principal bedroom with a fitted wardrobe and en suite, two further bedrooms and a family bathroom.

Kitchen/Dining

5.29m x 3.67m 17'4" x 12'1"

Living Room

5.29m x 3.25m 17'4" x 10'8"

WC/Utility

2.05m x 1.60m 6'8" x 5'3"

Principal Bedroom

2.80m x 4.07m 9'2" x 13'4"

En Suite

2.08m x 1.70m 6'10" x 5'7"

Bedroom 2

3.18m x 3.67m 10'5" x 12'0"

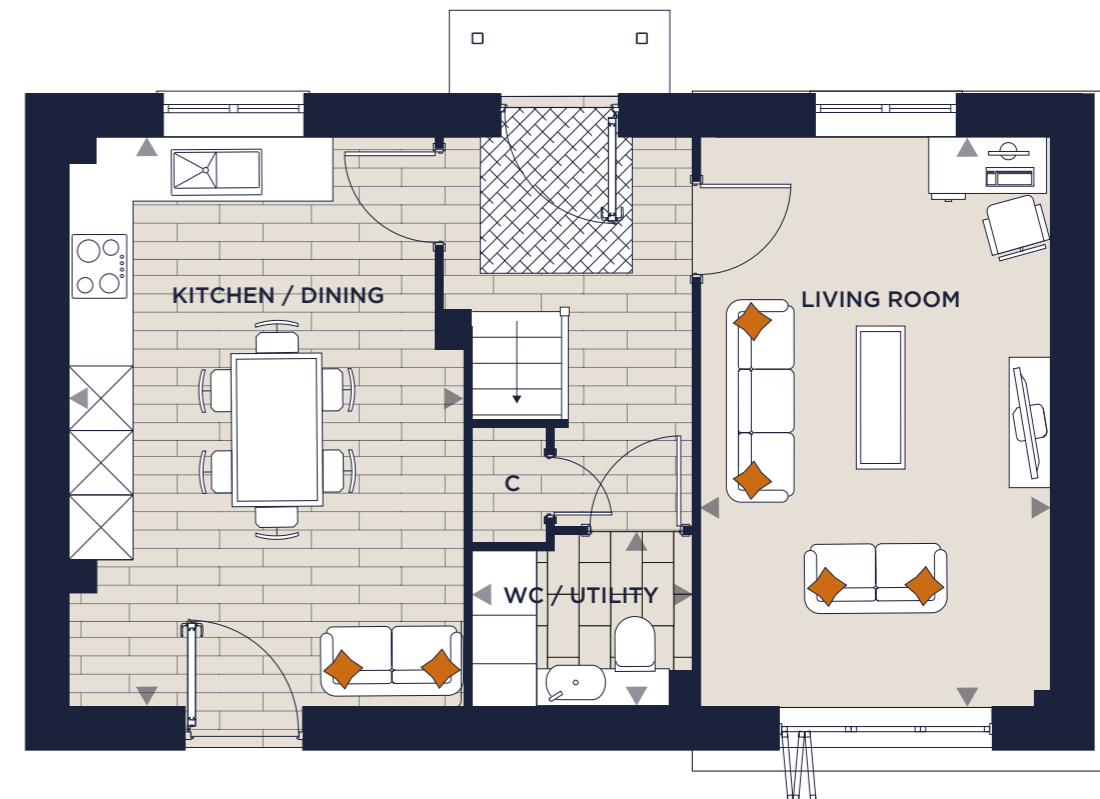
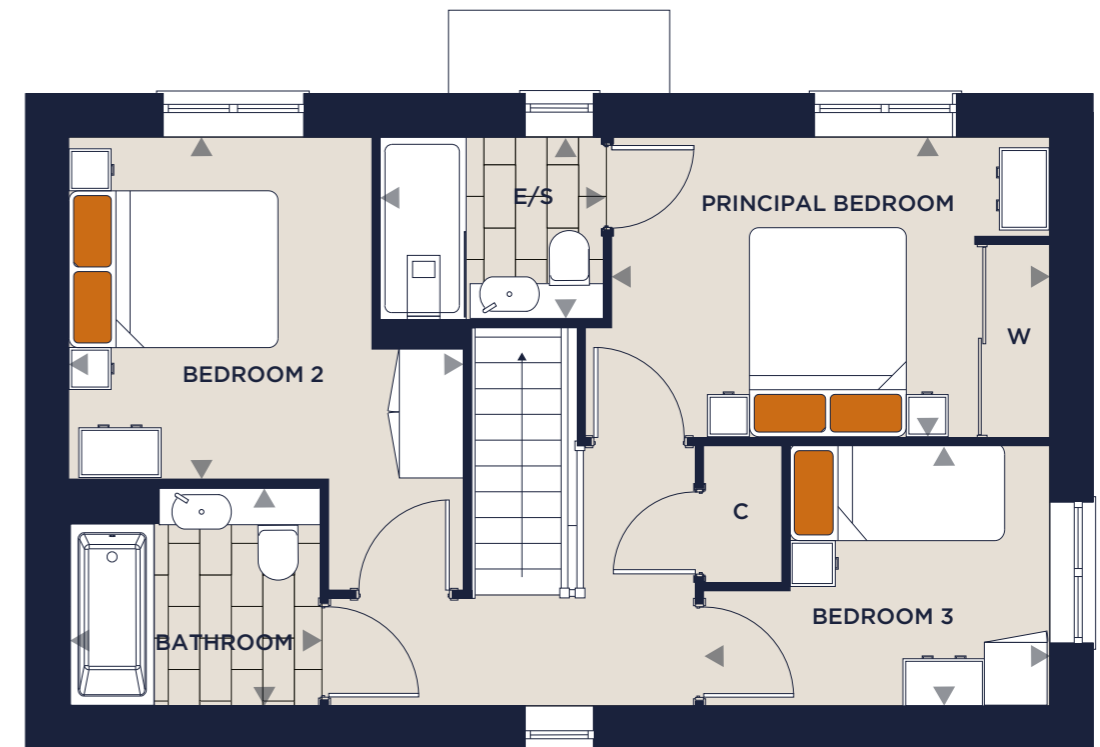
Bedroom 3

2.42m x 3.24m 7'11" x 10'7"

Bathroom

2.34m x 2.03m 7'8" x 6'8"

First Floor



Ground Floor

Floor plans, dimensions and configurations are included for guidance only, may be subject to revision during construction, please refer to current drawings with a Sales Consultant. Furniture is located in indicative positions.

All dimensions are within + or - 50mm/2 inches.

E/S - En Suite, C - Cupboard, W - Wardrobe. Dimensions taken from ▶





Computer Generated Image

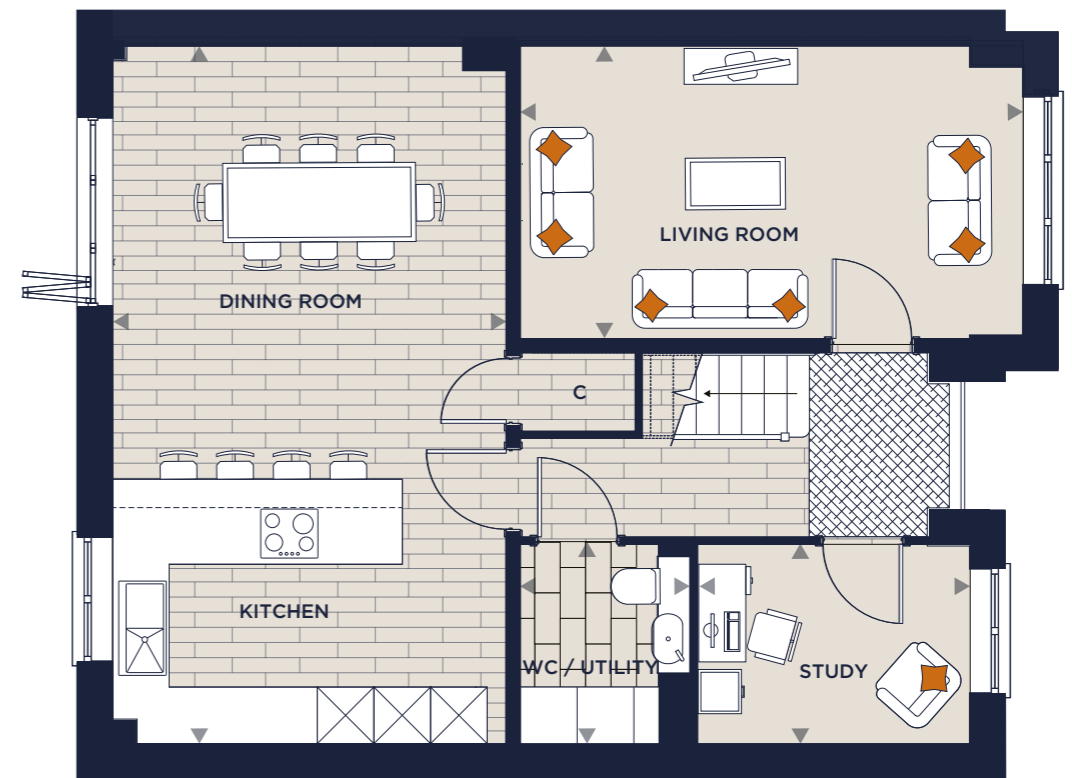
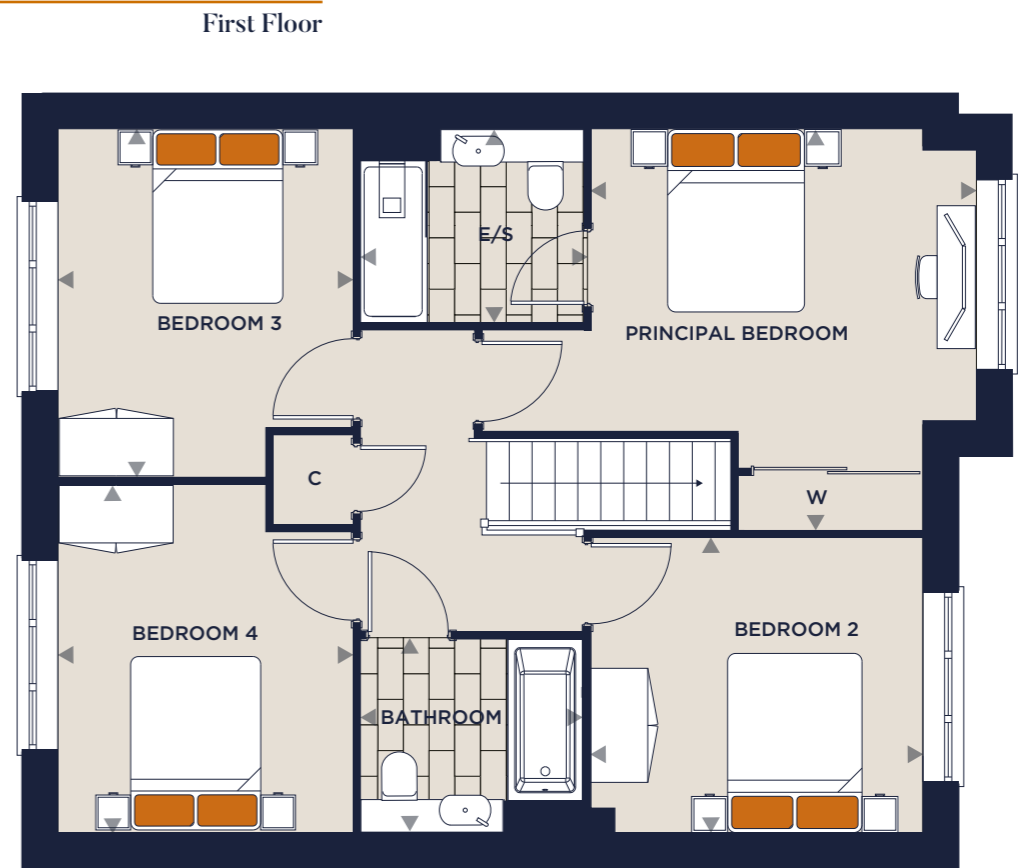
The Oak

4 BEDROOM DETACHED
Homes 4, 22(h), 23(h), 25(h) & 30
 Overall Size: 137m² | 1478ft²

The Oak provides a perfect home for family living with an uncompromising premium specification throughout. Bi-fold doors lead to the garden from the kitchen and dining area and the separate living room offers a perfect haven for relaxation. A study is ideal for homeworking. On the first floor, there are four double bedrooms, one with an en suite, and a separate family bathroom.

Kitchen/Dining Room
 7.38m x 4.16m 24'2" x 13'8"
Living Room
 2.99m x 5.32m 9'10" x 17'5"
WC/Utility
 2.11m x 1.80m 6'11" x 5'11"
Study
 2.11m x 2.88m 6'11" x 9'5"

Principal Bedroom
 4.21m x 4.04m 13'10" x 13'3"
En Suite
 2.34m x 2.03m 7'8" x 6'8"
Bedroom 2
 3.09m x 3.48m 10'2" x 11'5"
Bedroom 3
 3.65m x 3.09m 12'0" x 10'2"
Bedroom 4
 3.65m x 3.09m 12'0" x 10'2"
Bathroom
 2.34m x 2.03m 7'8" x 6'8"



Ground Floor

Floor plans, dimensions and configurations are included for guidance only, may be subject to revision during construction, please refer to current drawings with a Sales Consultant. Furniture is located in indicative positions.

All dimensions are within + or - 50mm/2 inches.

(h) - Handed homes, E/S - En Suite, C - Cupboard, W - Wardrobe. Dimensions taken from ▶





Computer Generated Image

The Pine

4 BEDROOM DETACHED Homes 2 & 3

Overall Size: 172m² | 1849ft²

Discover luxury in this detached home with a superb open-plan kitchen dining room with a breakfast bar and bi-fold doors leading to the garden. There is a separate living room, utility and study. Upstairs, the principal bedroom provides an en suite and magnificent walk-in wardrobe. There are a further three double bedrooms, a second en suite and family bathroom.

Kitchen/Dining

9.14m x 4.04m 30'0" x 13'3"

Living Room

3.42m x 5.54m 11'3" x 18'2"

WC

1.45m x 2.01m 4'9" x 6'7"

Utility

1.90m x 2.01m 6'3" x 6'7"

Study

3.42m x 3.44m 11'3" x 11'4"

Principal Bedroom

3.50m x 3.08m 11'6" x 10'1"

En Suite 1

2.68m x 1.83m 8'9" x 6'0"

Walk-in Wardrobe

2.68m x 1.59m 8'9" x 5'2"

Bedroom 2

3.50m x 3.78m 11'6" x 12'5"

En Suite 2

2.08m x 1.99m 6'10" x 6'6"

Bedroom 3

3.50m x 3.10m 11'6" x 10'2"

Bedroom 4

3.50m x 3.15m 11'6" x 10'4"

Bathroom

2.34m x 2.03m 7'8" x 6'8"

First Floor



Ground Floor

Floor plans, dimensions and configurations are included for guidance only, may be subject to revision during construction, please refer to current drawings with a Sales Consultant. Furniture is located in indicative positions.

All dimensions are within + or - 50mm/2 inches.

E/S - En Suite, C - Cupboard, W - Wardrobe. Dimensions taken from ▶





Computer Generated Image

The Willow

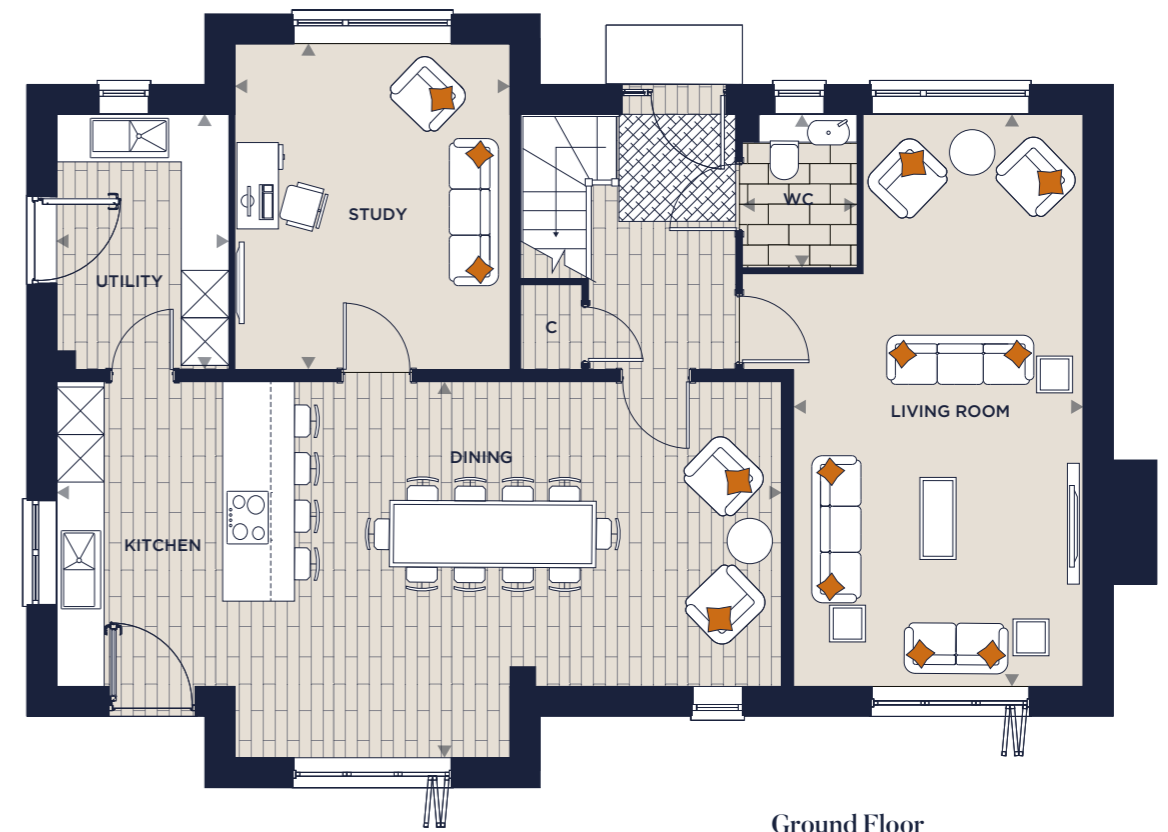
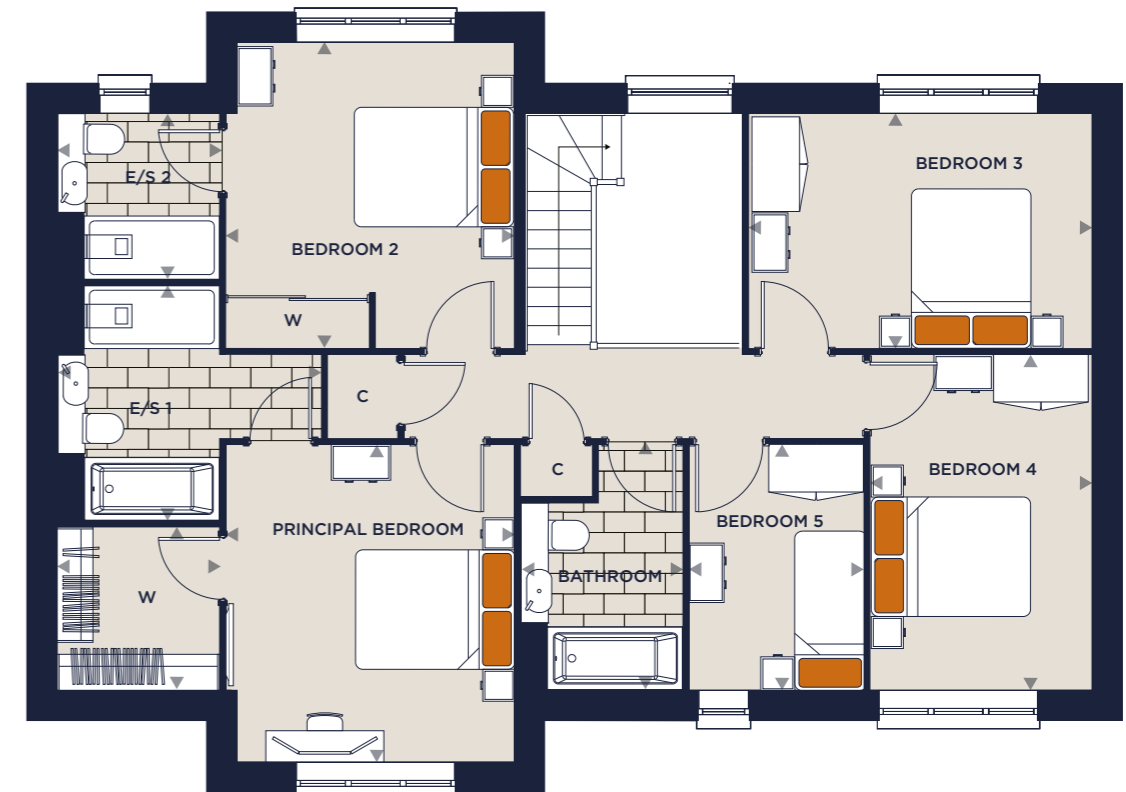
**5 BEDROOM DETACHED
Homes 20 & 24**

Overall Size: 200m² | 2149ft²

This extensive home is thoughtfully designed for modern day living. Discover a magnificent kitchen and dining area with breakfast bar and bi-fold doors that seamlessly transition to the private garden. A separate living room, study area and utility room add everyday convenience. The first floor is a sanctuary of space. The principal bedroom boasts a walk-in wardrobe and en suite with separate bath and shower.

Kitchen/Dining 4.74m x 9.17m 15'7" x 30'1"	Principal Bedroom 3.97m x 3.61m 13'0" x 11'10"	Bedroom 4 4.20m x 2.78m 13'9" x 9'1"
Utility 4.11m x 2.17m 13'6" x 7'1"	En Suite 1 2.94m x 2.03m 9'8" x 6'8"	Bedroom 5 2.19m x 3.07m 7'2" x 10'1"
Living Room 3.65m x 7.22m 12'0" x 23'8"	Walk-in Wardrobe 2.04m x 2.03m 6'8" x 6'8"	Bathroom 3.07m x 2.03m 10'1" x 6'8"
Study 3.47m x 4.11m 11'5" x 13'6"	Bedroom 2 3.83m x 3.61m 12'7" x 11'10"	
WC 1.45m x 1.93m 4'9" x 6'4"	En Suite 2 2.08m x 2.03m 6'10" x 6'8"	
	Bedroom 3 4.30m x 2.94m 14'1" x 9'8"	

First Floor



Ground Floor

Floor plans, dimensions and configurations are included for guidance only, may be subject to revision during construction, please refer to current drawings with a Sales Consultant. Furniture is located in indicative positions.

All dimensions are within + or - 50mm/2 inches.

E/S - En Suite, C - Cupboard, W - Wardrobe. Dimensions taken from ▶





Computer Generated Image

The Mulberry

**5 BEDROOM DETACHED
Homes 1(h) & 21**

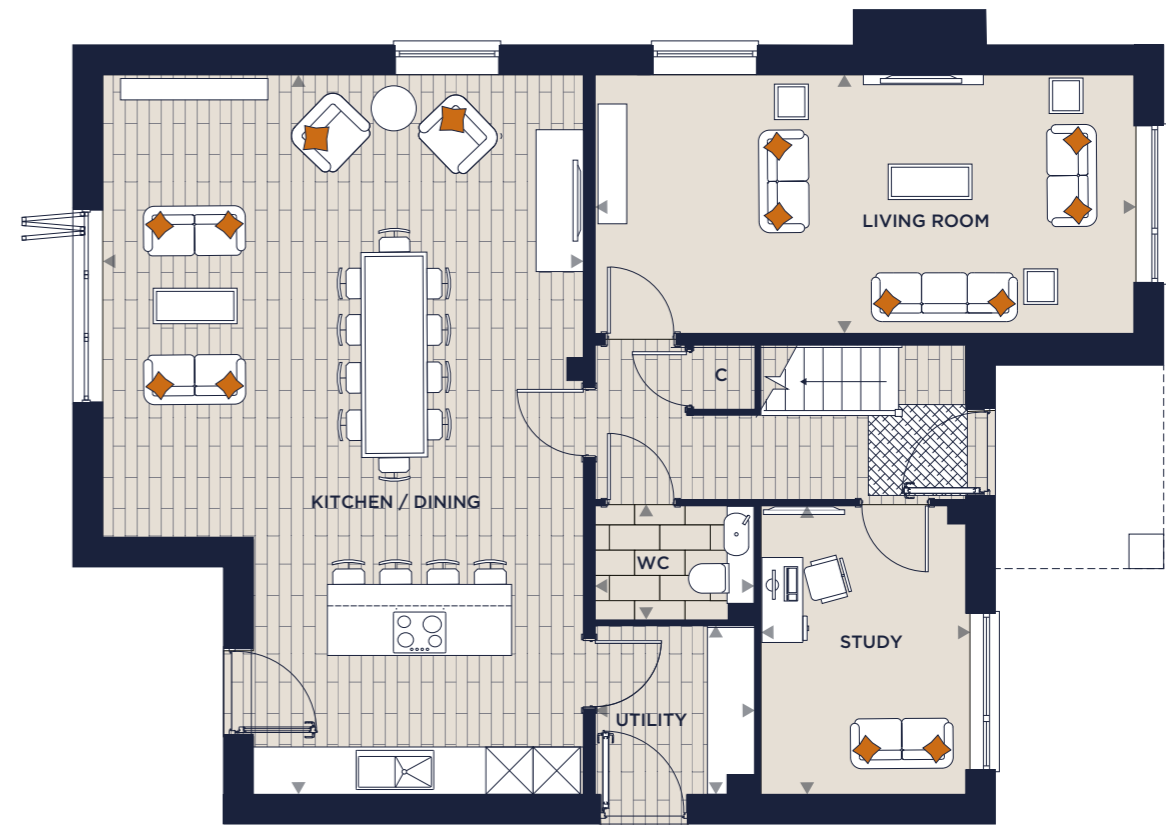
Overall Size: 207m² | 2231ft

This is a home you are sure to fall in love with. Discover an open-plan kitchen, family and dining area, feature island and bi-fold doors to the garden. A separate living room and study offer the perfect retreat. On the first floor, the principal bedroom has a chic en suite with freestanding bath and separate shower. There are four additional bedrooms, two with en suites, and a family bathroom.

Kitchen/Dining	9.13m x 5.90m	29'11" x 19'4"
Utility	2.07m x 2.05m	6'9" x 6'9"
Living Room	3.28m x 7.03m	10'9" x 23'1"
Study	3.64m x 2.74m	11'11" x 9'0"
WC	1.50m x 2.05m	4'11" x 6'9"

Principal Bedroom	3.15m x 5.87m	10'4" x 19'3"
En Suite 1	3.84m x 2.03m	12'7" x 6'8"
Bedroom 2	4.00m x 3.35m	13'1" x 11'0"
En Suite 2	2.44m x 2.05m	8'0" x 6'9"
Bedroom 3	3.79m x 3.18m	12'5" x 10'5"

Bedroom 4	3.04m x 3.64m	9'11" x 11'11"
Bedroom 5	2.16m x 3.63m	7'1" x 11'11"
Bathroom	2.07m x 2.03m	6'9" x 6'8"



Ground Floor

Floor plans, dimensions and configurations are included for guidance only, may be subject to revision during construction, please refer to current drawings with a Sales Consultant. Furniture is located in indicative positions.

All dimensions are within + or - 50mm/2 inches.

(h) - Handed homes, E/S - En Suite, C - Cupboard, W - Wardrobe. Dimensions taken from



Built with passion
DELIVERED WITH PRIDE

Weston Homes was formed in 1987 by Bob Weston, establishing what has now become one of the major property developers in the South East of England.

Weston Homes has built a reputation for high quality design and build standards, delivered with a passionate desire to make a genuine difference to the lives of our customers and to leave a legacy of which we are justly proud. Continually reassessing the marketplace, Weston Homes has combined the traditional skills of house-building with the ever-expanding opportunities created by new technology.

The company has taken a revolutionary approach to property development – many of our properties' components are now pre-manufactured and tested in our own carefully controlled Weston-run factory, rather than on site. This enables the efficient fitting at a late stage of construction for fixtures such as kitchen worktops, wardrobes and bathroom vanity units, which incorporate bespoke basins, storage cabinets and associated plumbing. This minimises wasted materials whilst maximising the quality of your brand new home.

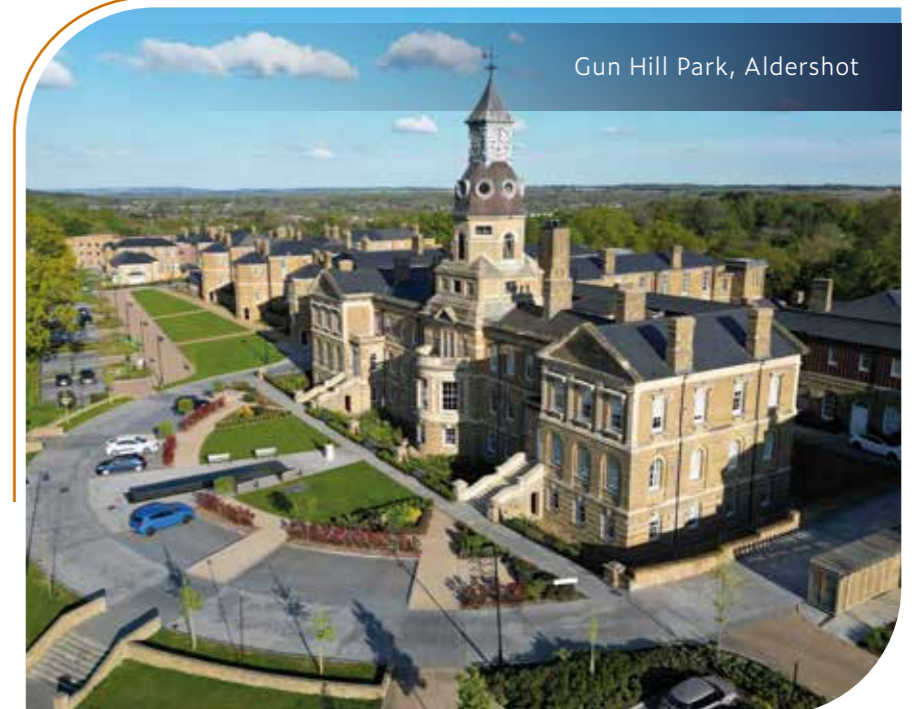
Weston Homes provides properties to exceed the expectations of purchasers both in terms of quality and value for money. Projects are hugely varied, ranging from select housing developments to large-scale city apartment complexes of many hundreds of homes. As well as new-build, the company has extensive experience of refurbishment and restoration work, breathing new life into historic and Listed buildings to give new purpose to Britain's architectural heritage.



Abbey Quay, Barking



Thornwood Park, Epping



Gun Hill Park, Aldershot



OUR COMMITMENT

to our customers

The entire Weston Homes team is committed to providing you, our customers, with quality homes.

We are working to achieve one common goal: to ensure that you are satisfied and happy with your new home, from the moment that you make your reservation, to the day you move in and beyond.

No matter who you are dealing with, or what queries, questions or complaints you may have, you can be confident that our people and procedures will adhere to the terms of our customer charter and the 'New Homes Quality Code'. Copies of the 'New Homes Quality Code' are available from our sales offices and via our website; a copy (also identifying where further guidance can be found) will always be provided to you upon reservation.

Each property is quality checked and commissioned by our dedicated Customer Services team before handover to its new owner.

Your home will come with a 10-year new homes warranty which includes:

- A two-year builder warranty from legal completion directly with Weston Homes, backed by ICW
- Ten years of structural defects insurance cover from ICW (which runs concurrently with Weston Homes' two-year warranty)

For more details, please speak to the sales consultant.



The computer generated images, floor plans, configuration and layouts are included for guidance only and do not constitute, nor constitute part of, an offer or contract. Please refer to drawings in the sales suite.

Landscaping is indicative only. Growth will vary over time depending on seasonal conditions, maintenance and natural growth patterns.

All descriptions, dimensions, references to condition and necessary permissions for use and occupation, and other details are given without responsibilities and any intending purchasers should not rely on them as statements or representations of fact but must satisfy themselves by inspection or otherwise as to the correctness of each of them. Weston Homes Plc operates a policy of continuous product development and features may therefore vary from time to time.

Designed by Trident Marketing Digital Ltd. tridentmarketinguk.com





Weston
Homes 