

INTRODUCING

Marri Street, Watford WD24 5FY

2 Bedroom Apartment - Duplex for sale

£475,000

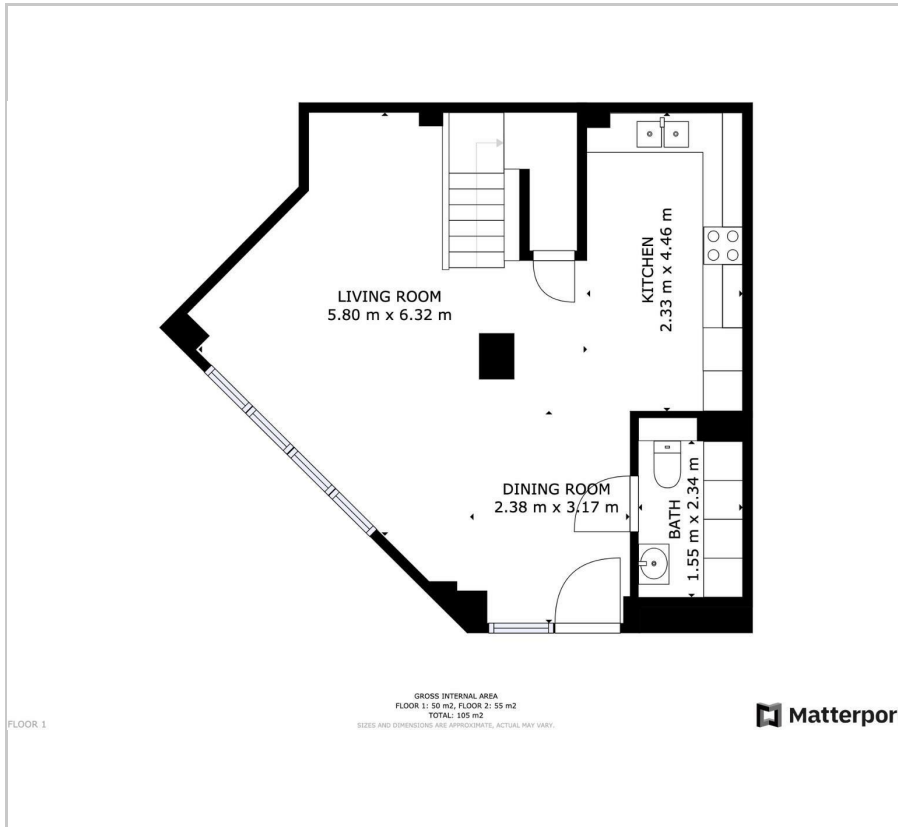
Guide price



2 Bedrooms/2 Bathrooms EPC Rating: B

- Large Modern Split Level Duplex Apartment over 1168sqft
- 2 Double Bedrooms
- Open Plan Living Room/Kitchen
- Under Ground Parking Space & Private Front Door
- Share Of The Freehold
- High Specification Finish with Floor to Ceiling Windows Throughout
- 2 En-Suites + Further WC
- Downstairs Cloakroom/Utility Room
- Communal Roof Terrace
- Council Tax Band E / No Upper Chain

Floor Plan

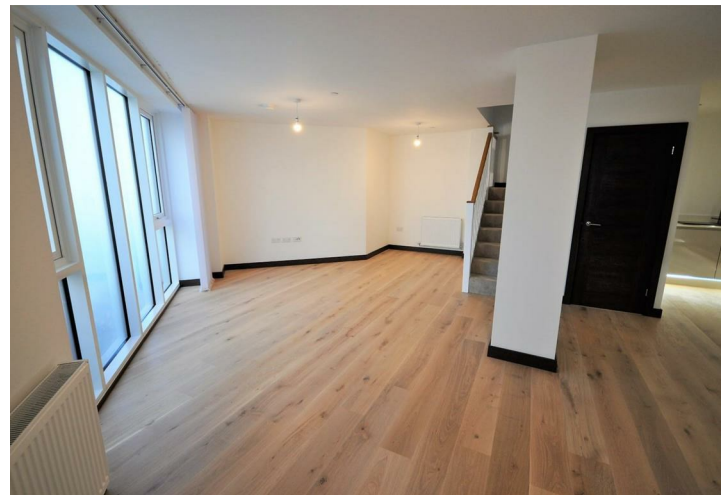


Map



Energy Efficiency

Energy Efficiency Rating		Current	Potential
Very energy efficient - lower running costs			
(92 plus) A			
(81-91) B		84	84
(69-80) C			
(55-68) D			
(39-54) E			
(21-38) F			
(1-20) G			
Not energy efficient - higher running costs			
England & Wales		EU Directive 2002/91/EC	



These particulars, whilst believed to be accurate are set out as a general outline only for guidance and do not constitute any part of an offer or contract. Intending purchasers should not rely on them as statements of representation of fact, but must satisfy themselves by inspection or otherwise as to their accuracy. No person in this firm's employment has the authority to make or give any representation or warranty in respect of the property.