





A superb two bedroom end terrace house, providing an impressive standard of accommodation within this ever popular location. Internally the interior is very well presented throughout and to the ground floor includes an entrance lobby, lounge and a modern fitted kitchen whilst to the first floor there are two bedrooms and a contemporary bathroom/wc. Externally there is a low maintenance garden to the front and a delightful, lawned garden to the rear. The property is ideally situated for local amenities, shops and schools as well as offering excellent links to Sunderland City Centre, Nissan, Doxford International Business Park and major road links including the A19. Viewing is highly recommended.

MAIN ROOMS AND DIMENSIONS

Ground Floor

Access via UPVC entrance door.

Entrance Lobby



Radiator, Stairs to first floor and door to lounge.

Lounge 10'1" x 13'1"



Double glazed bay window to front, electric fire and radiator. Door to kitchen.

Kitchen 14'6" x 8'10"



Range of wall and base units with countertops over incorporating a single bowl stainless steel sink and drainer

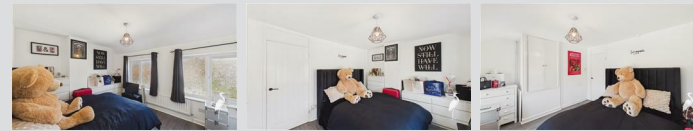
with mixer tap. Integrated oven with electric hob and hood. Space for fridge freezer and washing machine. Radiator and storage cupboard. Double glazed window and as UPVC door to rear.

First Floor Landing



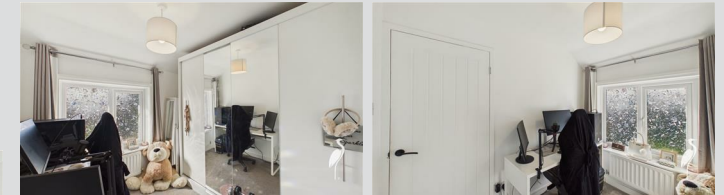
Access point to loft.

Bedroom 1 14'4" x 10'4"



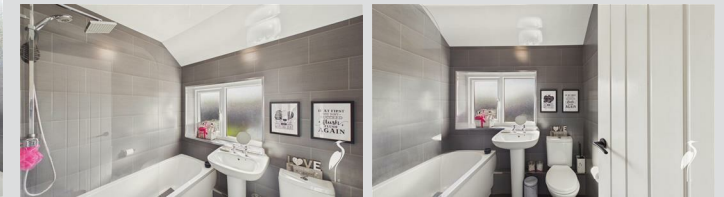
2x double glazed windows to front, radiator and built in storage cupboard.

Bedroom 2 7'8" x 8'6"



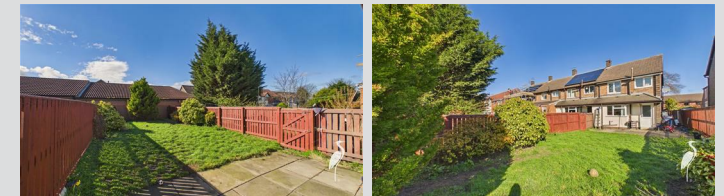
Double glazed window to rear and radiator.

Bathroom



Low level WC, washbasin and bath with dual head waterfall shower over, radiator and double glazed window to rear.

Outside



Paved garden to the front whilst to the rear a garden mainly laid to lawn side access gate.

Council Tax Band

The Council Tax Band is Band A.

Tenure Freehold

We are advised by the Vendors that the property is Freehold. Any prospective purchaser should clarify this with their Solicitor.

Visit www.peterheron.co.uk or call 0191 510 3323

Tried. Trusted. Recommended. City Branch 20 Fawcett Street Sunderland SR1 1RH Fulwell Branch 15 Sea Road Fulwell Sunderland SR6 9BS

MAIN ROOMS AND DIMENSIONS

Important Notice - Particulars

Peter Heron Ltd for themselves and for the vendors of this property whose agents they are, give notice that:-
 The particulars are set out for general guidance only for the intending Purchasers and do not constitute part of an offer or contract. Whilst we endeavour to make our sales particulars accurate and reliable, if there is anything of particular importance which you feel may influence your decision to purchase, please contact the office and we will be pleased to check the information. Do so particularly, if contemplating travelling some distance to view the property. All descriptions, dimensions, references to conditions and necessary permissions for use and occupation and other details are given in good faith, and are believed to be correct, however any intending purchasers should not rely on them that statements are representations of fact, but must satisfy themselves by inspection or otherwise as to the correctness of each of them. Independent property size verification is recommended.

Lease details, service charges and ground rent (where applicable) are given as a guide only and should be checked and confirmed by your Solicitor prior to exchange of contracts. No person in the employment of Peter Heron Ltd has any authority to make or give any representation or warranty whatever in relation to this property or these particulars, nor to enter into any contract on behalf of Peter Heron Ltd, nor into any contract on behalf of the Vendor. The copyright of all details and photographs remain exclusive to Peter Heron Ltd.

Please note that in the event the purchaser uses the services of Peter Heron Conveyancing in the purchase of their home, Peter Heron Ltd will be paid a completion commission of £300.00 by Movewithus Ltd.

Sea Road Viewings

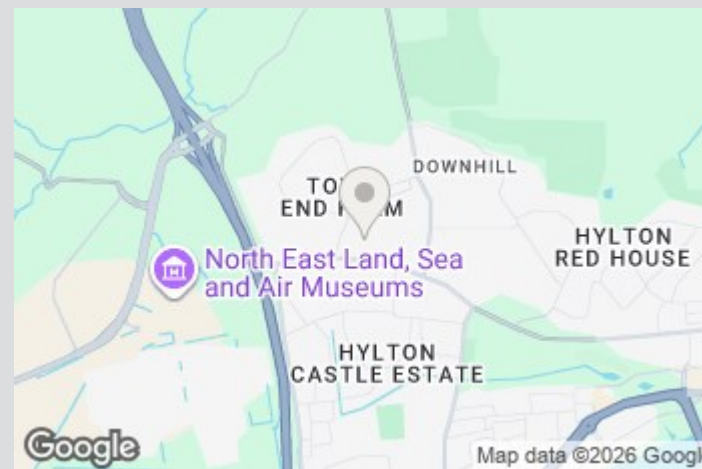
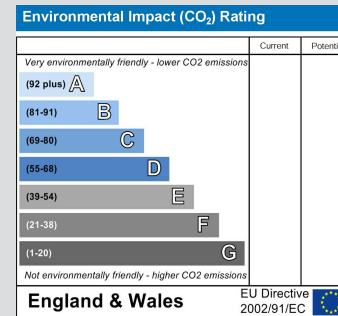
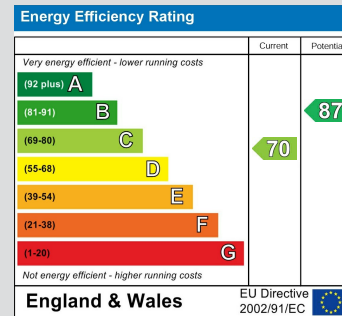
To arrange an appointment to view this property please contact our Sea Road branch on or book viewing online at peterheron.co.uk

Opening Times

Monday to Friday 9.00am - 5.00pm Saturday 9.00am - 12noon

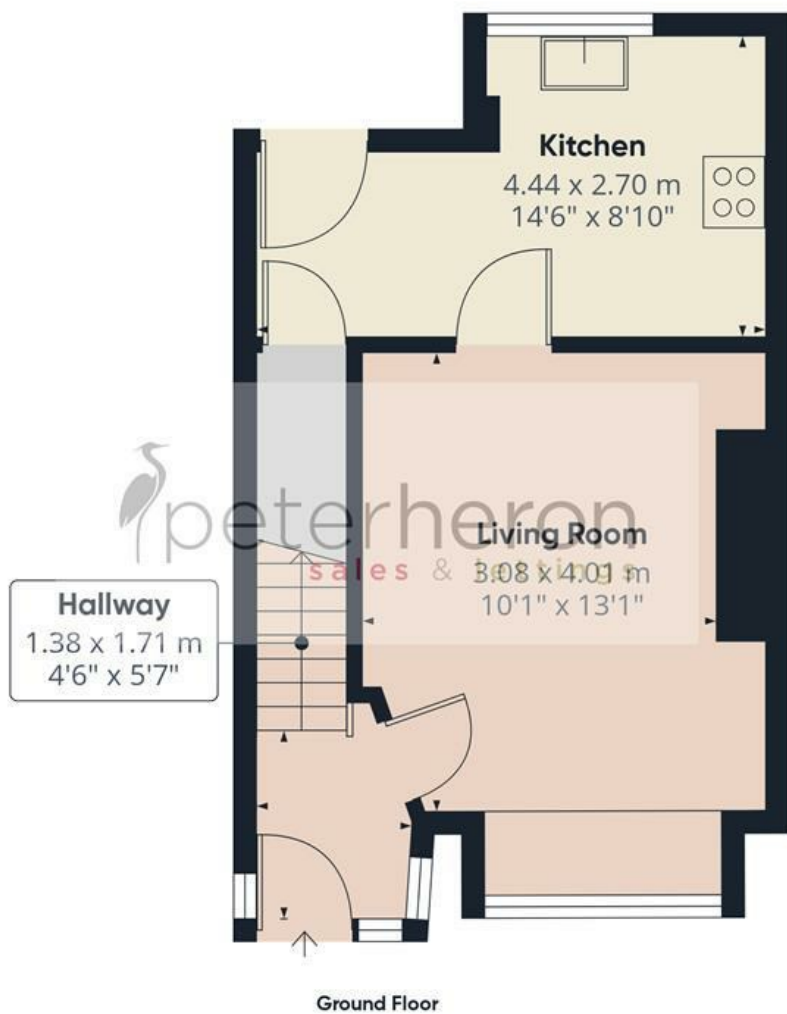
Ombudsman

Peter Heron Estate Agents are members of The Property Ombudsman and subscribe to The Property Ombudsman Code of Practice.



Visit www.peterheron.co.uk or call 0191 510 3323

Tried. Trusted. Recommended. City Branch 20 Fawcett Street Sunderland SR1 1RH Fulwell Branch 15 Sea Road Fulwell Sunderland SR6 9BS



Approximate total area⁽¹⁾

51.4 m²
555 ft²

(1) Excluding balconies and terraces

Calculations reference the RICS IPMS 3C standard. Measurements are approximate and not to scale. This floor plan is intended for illustration only.

GIRAFFE360

