

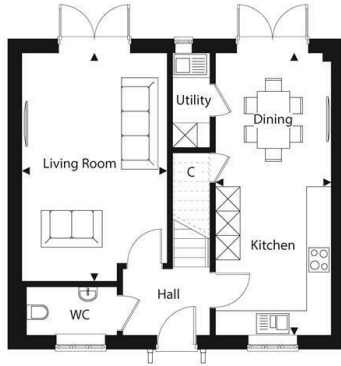


Plot 15, The Glanville Frenches Green, Upton, Poole, Dorset, BH16

£485,000

- Three Bedrooms
- Garage & Drive For Two Cars
- Thoughtfully Designed Layouts
- Anticipated Completion - Oct/Nov 2026
- New Detached Home
- High Specification Interiors
- A Collection of 2,3 & 4 Bedroom Homes
- Stunning En-Suite
- Beautifully Finished
- Integrated Kitchen Appliances

The Glanvilles



Ground Floor

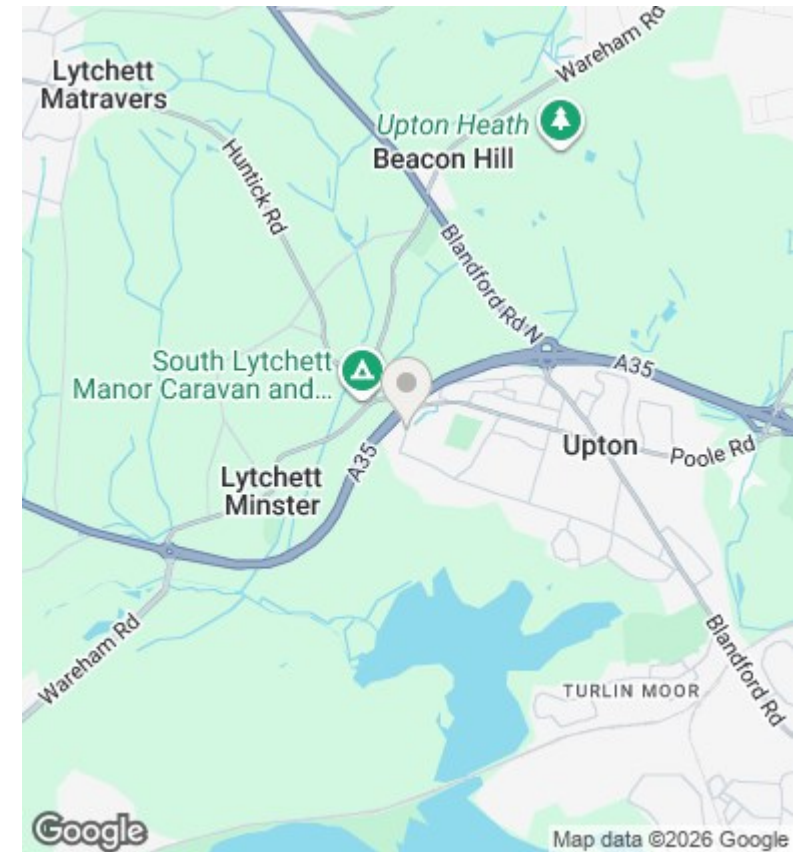
| | | |
|----------------|---------------|-----------------|
| Kitchen/Dining | 2.85m x 6.93m | 9' 4" x 22' 9" |
| Living Room | 3.56m x 5.61m | 11' 8" x 18' 5" |

TOTAL FLOOR AREA 106m² 1136ft²



First Floor

| | | |
|--------------|---------------|-----------------|
| Main Bedroom | 2.86m x 5.16m | 9' 5" x 16' 11" |
| Bedroom 2 | 4.62m x 2.60m | 15' 2" x 8' 6" |
| Bedroom 3 | 3.62m x 2.20m | 11' 11" x 7' 2" |



Directions

Viewings

Viewings by arrangement only. Call 01202 622101 to make an appointment.

Council Tax Band

EPC Rating:

| Energy Efficiency Rating | | |
|--|-------------------------|-----------|
| | Current | Potential |
| <i>Very energy efficient - lower running costs</i> | | |
| (92 plus) A | | |
| (81-91) B | | |
| (69-80) C | | |
| (55-68) D | | |
| (39-54) E | | |
| (21-38) F | | |
| (1-20) G | | |
| <i>Not energy efficient - higher running costs</i> | | |
| England & Wales | EU Directive 2002/91/EC | |