

Colin Dean Residential

in partnership with Dexters



Ivy Close, HA2

£1,850 pcm

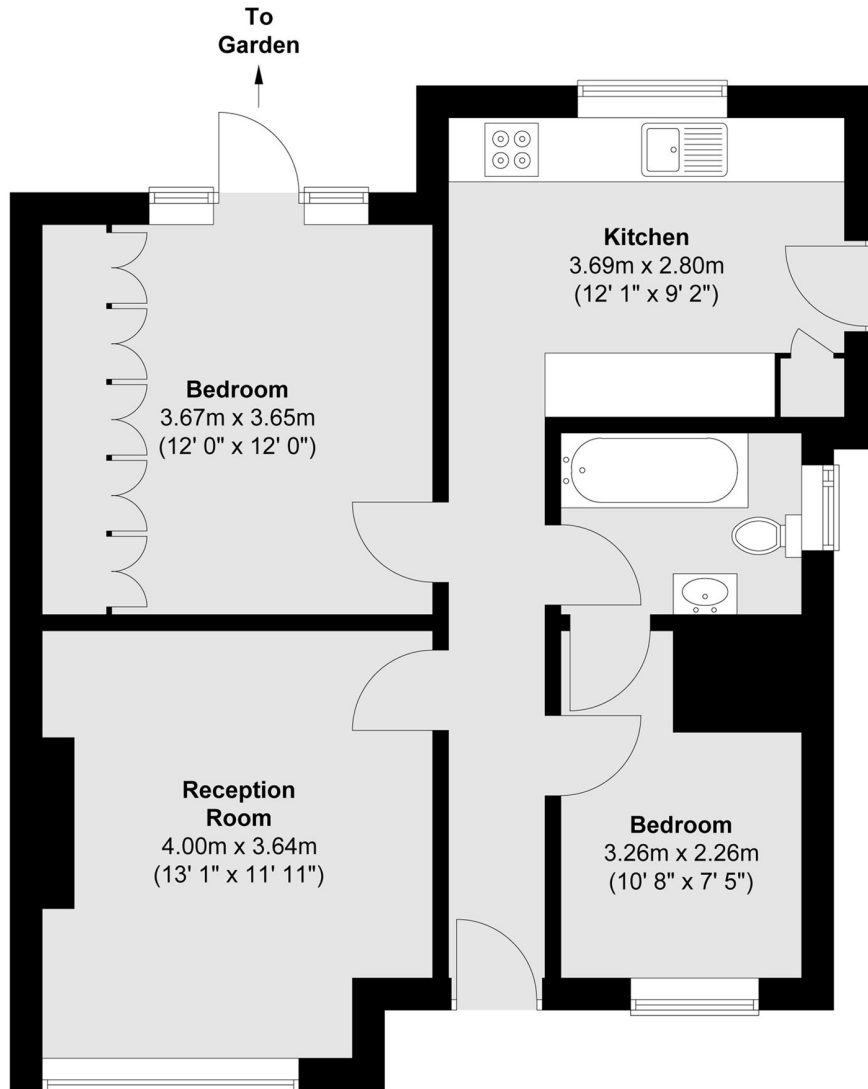
This newly refurbished two bedroom ground floor maisonette set within a highly desirable location. Finished to a contemporary standard throughout, the property offers a generous reception room, complemented by a sleek, brand new open-plan kitchen with fully integrated appliances. The home further benefits from a substantial private patio garden, ideal for both entertaining and everyday living. Energy Rating: C.

The property is situated in a quiet residential road and has local shops, bus stops and popular schools nearby. Both Northolt Park and South Ruislip train stations are approximately a mile away.

- Newly Refurbished • Ground Floor Maisonette • Two Bedrooms •
- Unfurnished • Large Reception Room • Separate Kitchen •

Colin Dean Residential

in partnership with Dexters



Total area (approx.) : 57.2 sq. m (616 sq. ft)

Colin Dean Residential
350 Pinner Road,
Harrow, HA1 4LB
020 8515 7929
daniel.murray@colindean.com

Energy Rating: C We aim to make our particulars both accurate and reliable. However they are not guaranteed; nor do they form part of an offer or contract. If you require clarification on any points then please contact us, especially if you're travelling some distance to view. Please note that appliances and heating systems have not been tested and therefore no warranties can be given as to their good working order.