



Winder Crescent, Tiverton EX16 5FE

welcome to

Winder Crescent, Tiverton

This detached four-bedroom home features a front facing lounge and a stylish kitchen/diner with access to the garden, plus utility room and downstairs WC. Upstairs offers four bedrooms, shower room & bathroom. Rear enclosed garden, garage and off-road parking.

Call Fox & Sons to arrange a viewing of this detached four-bedroom home which is presented to a high standard throughout. The generous lounge is front facing, while the stylish kitchen/diner creates a bright and sociable hub of the home, with direct access to the rear garden. Completing the ground floor is a separate utility room and a downstairs WC. Upstairs you will find four bedrooms, three of which are double rooms. Bedroom one benefits from an en-suite shower room. The other rooms are served by a family bathroom.

Externally, the home enjoys a landscaped rear garden which is presented over two levels. There is a gate leading to the driveway and garage. The first level is set up for entertaining with a patio area and enclosed artificial grass area. Steps lead down to the second area which is secluded. This is laid to lawn with flower bed borders; there is a stone area and a decked seating area. Ideal for outdoor enjoyment, along with the added benefits of a driveway and garage, providing ample parking and storage. Situated in a desirable location, this makes an ideal choice for family living.

Entrance Hall

Doors to all ground floor rooms, with stairs up to the first floor. Also has a radiator and an understairs cupboard.

Kitchen/Diner

The kitchen/diner has a double-glazed window to the rear, with patio doors into the garden. It has wall and base units, a gas hob, double eye-level oven, an extractor hood, an integrated fridge/freezer and dishwasher, with a radiator, a one and a half bowl sink and drainer, a breakfast bar, and an extractor fan. It also has splashback and a door to the utility room.

Lounge

The lounge has a double-glazed window to the front, with a radiator.

Utility Room

The utility room has a radiator, base units, space for a washing machine, an extractor fan, a sink and drainer, and splashback.

W.C.

Has a WC, a wash hand basin, a radiator, an extractor fan, and is partially tiled.





Landing

The landing has doors to all first floor rooms, with a radiator and the loft hatch.

Bedroom One

Double-glazed window to the front, with a TV point, a telephone point, a radiator, and built-in wardrobes.

Ensuite

Features a WC, a wash hand basin, a shower, a heated towel rail, an extractor fan, and is partially tiled.

Bedroom Two

Double-glazed window to the rear, with a radiator and built in wardrobes.

Bedroom Three

Features a double-glazed window to the rear, a radiator, and built in wardrobes.

Bedroom Four

Has a double-glazed window to the front, and a radiator.

Bathroom

The bathroom features a WC, a wash hand basin, a heated towel rail, a bath, an extractor fan, and is partially tiled.

Front Garden

The front garden is a stone area with mature shrubs, with a patio path leading to the front door.

Rear Garden

This lovely rear garden is laid to lawn with flower bed borders with mature shrubs, with a decking area for seating, a stone area, and an apple tree. There are ten steps up to patio area and fenced off astro turf. It also has an outside tap, an outside plug, and side access.

Parking

There is driveway parking, with a garage.

What Three Words

professes.trim.dozed



view this property online fox-and-sons.co.uk/Property/TVT106200



welcome to

Winder Crescent, Tiverton

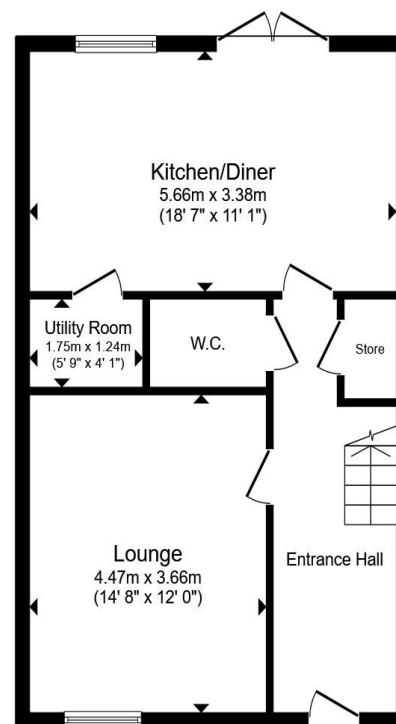
- Four Bedroom Detached Home
- Kitchen/ Dining Room & Separate Utility Room
- Front Facing Lounge
- Ensuite Shower Room & Family Bathroom
- Garage & Off-Road Parking

Tenure: Freehold EPC Rating: Awaiting

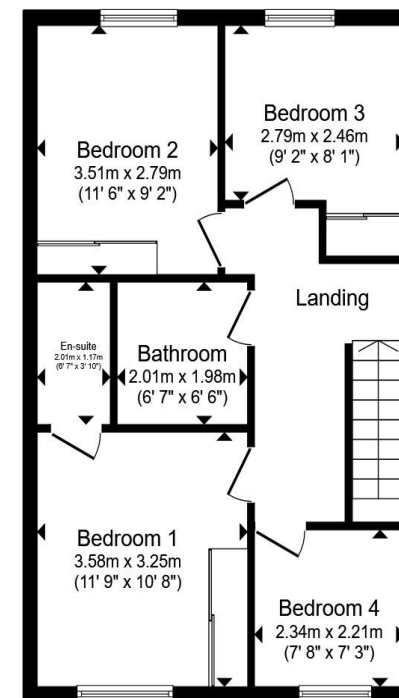
Council Tax Band: D

guide price

£350,000



Ground Floor



First Floor

Total floor area 105.3 m² (1,133 sq.ft.) approx

This floor plan is for illustrative purposes only. It is not drawn to scale. Any measurements, floor areas (including any total floor area), openings and orientation are approximate. No details are guaranteed, they cannot be relied upon for any purpose and they do not form part of any agreement. No liability is taken for any error, omission or misstatement. A party must rely upon its own inspection(s). Powered by www.propertybox.io



view this property online fox-and-sons.co.uk/Property/TVT106200



Property Ref:
TVT106200 - 0003

1. MONEY LAUNDERING REGULATIONS Intending purchasers will be asked to produce identification documentation at a later stage and we would ask for your co-operation in order that there is no delay in agreeing the sale. 2. These particulars do not constitute part or all of an offer or contract. 3. The measurements indicated are supplied for guidance only and as such must be considered incorrect. Potential buyers are advised to recheck measurements before committing to any expense. 4. We have not tested any apparatus, equipment, fixtures or services and it is in the buyers interest to check the working condition of any appliances. 5. Where an EPC, or a Home Report (Scotland only) is held for this property, it is available for inspection at the branch by appointment. If you require a printed version of a Home Report, you will need to pay a reasonable production charge reflecting printing and other costs. 6. We are not able to offer an opinion either written or verbal on the content of these reports and this must be obtained from your legal representative. 7. Whilst we take care in preparing these reports, a buyer should ensure that his/her legal representative confirms as soon as possible all matters relating to title including the extent and boundaries of the property and other important matters before exchange of contracts.

Fox & Sons is a trading name of Sequence (UK) Limited which is registered in England and Wales under company number 4268443, Registered Office is Cumbria House, 16-20 Hockliffe Street, Leighton Buzzard, Bedfordshire, LU7 1GN. VAT Registration Number is 500 2481 05.



01884 256041



tiverton@fox-and-sons.co.uk



36 Bampton Street, TIVERTON, Devon, EX16 6AH



fox-and-sons.co.uk