



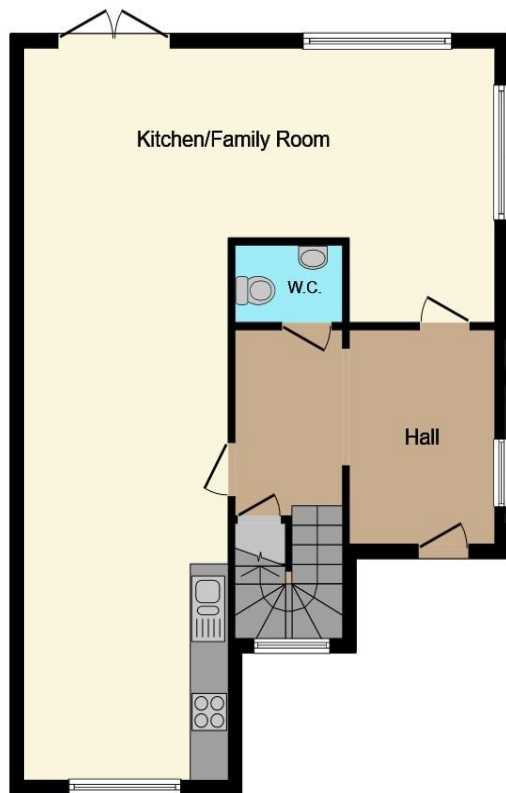
Beech Road, Saltford Bristol BS31 3BE

welcome to

Beech Road, Saltford Bristol

Situated in the picturesque village of Saltford, this well-presented three-bedroom family home offers open-plan living, a downstairs cloakroom, driveway parking, and a generous rear garden—making it an ideal choice for family living.

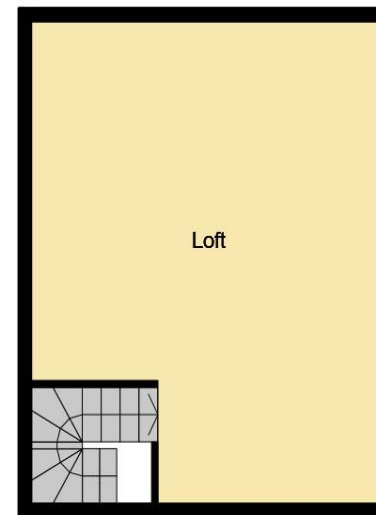




Ground Floor



First Floor



Loft Floor

Location

Entrance Hall

Hallway

Open Plan Living / Kitchen

24' 5" x 16' 6" (7.44m x 5.03m)

Cloakroom

Landing

Bedroom One

12' 3" x 12' 7" (3.73m x 3.84m)

Bedroom Two

11' 9" x 10' 11" (3.58m x 3.33m)

Bedroom Three

15' 3" x 10' 11" (4.65m x 3.33m)

Bathroom

9' 2" x 8' (2.79m x 2.44m)

Loft

Rear Garden

Parking

This floor plan is for illustrative purposes only. It is not drawn to scale. Any measurements, floor areas (including any total floor area), openings and orientation are approximate. No details are guaranteed, they cannot be relied upon for any purpose and they do not form part of any agreement. No liability is taken for any error, omission or misstatement. A party must rely upon its own inspection(s). Powered by www.focalagent.com

welcome to

Beech Road, Saltford Bristol

- Open-planning living area
- Three double bedrooms
- Fantastic Village location
- Driveway Parking
- Easy access to Saltford Primary School

Tenure: Freehold EPC Rating: C
Council Tax Band: C

£525,000



Please note the marker reflects the
postcode not the actual property

view this property online [allenandharris.co.uk/Property/BAT110123](https://www.allenandharris.co.uk/Property/BAT110123)



Property Ref:
BAT110123 - 0010

1. MONEY LAUNDERING REGULATIONS Intending purchasers will be asked to produce identification documentation at a later stage and we would ask for your co-operation in order that there is no delay in agreeing the sale. 2. These particulars do not constitute part or all of an offer or contract. 3. The measurements indicated are supplied for guidance only and as such must be considered incorrect. Potential buyers are advised to recheck measurements before committing to any expense. 4. We have not tested any apparatus, equipment, fixtures or services and it is in the buyers interest to check the working condition of any appliances. 5. Where an EPC, or a Home Report (Scotland only) is held for this property, it is available for inspection at the branch by appointment. If you require a printed version of a Home Report, you will need to pay a reasonable production charge reflecting printing and other costs. 6. We are not able to offer an opinion either written or verbal on the content of these reports and this must be obtained from your legal representative. 7. Whilst we take care in preparing these reports, a buyer should ensure that his/her legal representative confirms as soon as possible all matters relating to title including the extent and boundaries of the property and other important matters before exchange of contracts.


allen & harris



01225 425111



Bath@allenandharris.co.uk



7 Princes Buildings, BATH, Avon, BA1 2ED



allenandharris.co.uk