



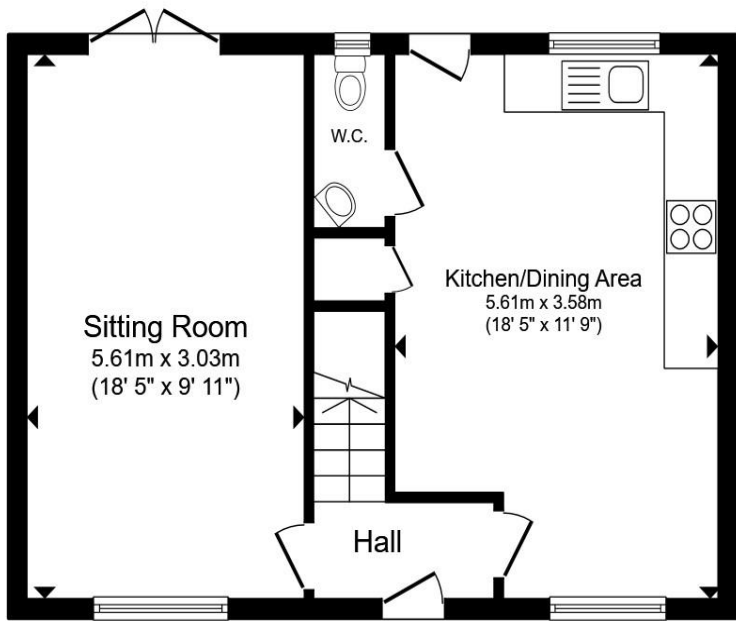
St. Marys Avenue
Wittering PE8 6EA



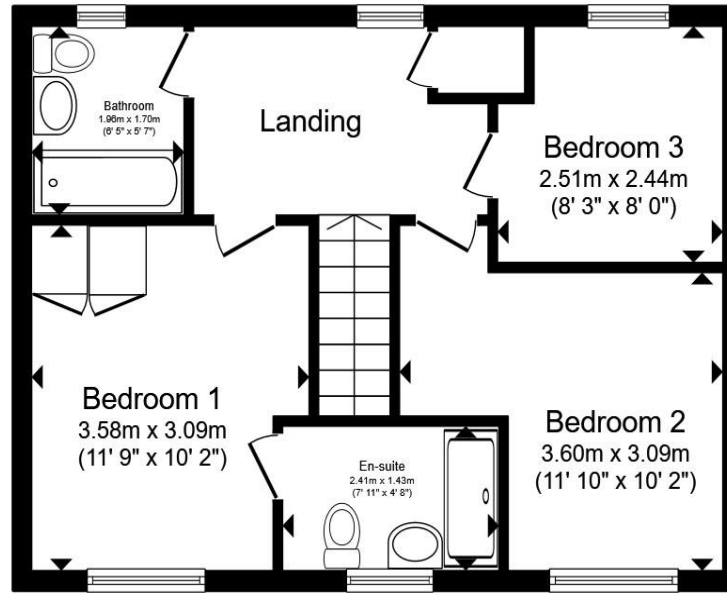
Welcome to
St. Marys Avenue

Situated within a modern development in a popular village offering an excellent range of amenities and convenient transport links, this beautifully presented stone-fronted three-bedroom semi-detached home provides stylish and well-planned accommodation throughout.





Ground Floor



First Floor

Entrance Hall

Sitting Room

18' 5" x 9' 11" (5.61m x 3.02m)

Kitchen Dining Room

18' 5" x 11' 9" (5.61m x 3.58m)

Cloakroom

Bedroom One

11' 9" x 10' 2" (3.58m x 3.10m)

En-Suite Shower Room

7' 11" x 4' 8" (2.41m x 1.42m)

Bedroom Two

11' 10" x 10' 2" (3.61m x 3.10m)

Bedroom Three

8' 3" x 8' (2.51m x 2.44m)

Bathroom

6' 5" x 5' 7" (1.96m x 1.70m)

Total floor area 86.7 sq.m. (934 sq.ft.) approx

This floor plan is for illustrative purposes only. It is not drawn to scale. Any measurements, floor areas (including any total floor area), openings and orientation are approximate. No details are guaranteed, they cannot be relied upon for any purpose and they do not form part of any agreement. No liability is taken for any error, omission or misstatement. A party must rely upon its own inspection(s). Powered by www.propertybox.io



Welcome to

St. Marys Avenue

- Immaculately presented three-bedroom home in modern development
- Popular village location with many amenities
- Principal bedroom with en-suite shower room
- Generous kitchen dining room
- Downstairs cloakroom
- Enclosed rear garden
- Parking to the front
- No chain

Tenure: Freehold EPC Rating: B
Council Tax Band: B

offers over

£300,000



Please note the marker reflects the postcode not the actual property

 **01780 765060**

 mailroom@knightpartnership.com

 3 Red Lion Street, STAMFORD, Lincolnshire, PE9 1PA

 knightpartnership.com

1. MONEY LAUNDERING REGULATIONS Intending purchasers will be asked to produce identification documentation at a later stage and we would ask for your co-operation in order that there is no delay in agreeing the sale. 2. These particulars do not constitute part or all of an offer or contract. 3. The measurements indicated are supplied for guidance only and as such must be considered incorrect. Potential buyers are advised to recheck measurements before committing to any expense. 4. We have not tested any apparatus, equipment, fixtures or services and it is in the buyers interest to check the working condition of any appliances. 5. Where an EPC, or a Home Report (Scotland only) is held for this property, it is available for inspection at the branch by appointment. If you require a printed version of a Home Report, you will need to pay a reasonable production charge reflecting printing and other costs. 6. We are not able to offer an opinion either written or verbal on the content of these reports and this must be obtained from your legal representative. 7. Whilst we take care in preparing these reports, a buyer should ensure that his/her legal representative confirms as soon as possible all matters relating to title including the extent and boundaries of the property and other important matters before exchange of contracts.

Knight Partnership is a trading name of Sequence (UK) Limited which is registered in England and Wales under company number 4268443, Registered Office is Cumbria House, 16-20 Hockliffe Street, Leighton Buzzard, Bedfordshire, LU7 1GN. VAT Registration Number is 500 2481 05.



KNIGHT
PARTNERSHIP

Property Ref:

SMD105427 - 0002