



Holmesland Lane, Botley, Southampton, SO30 2EH

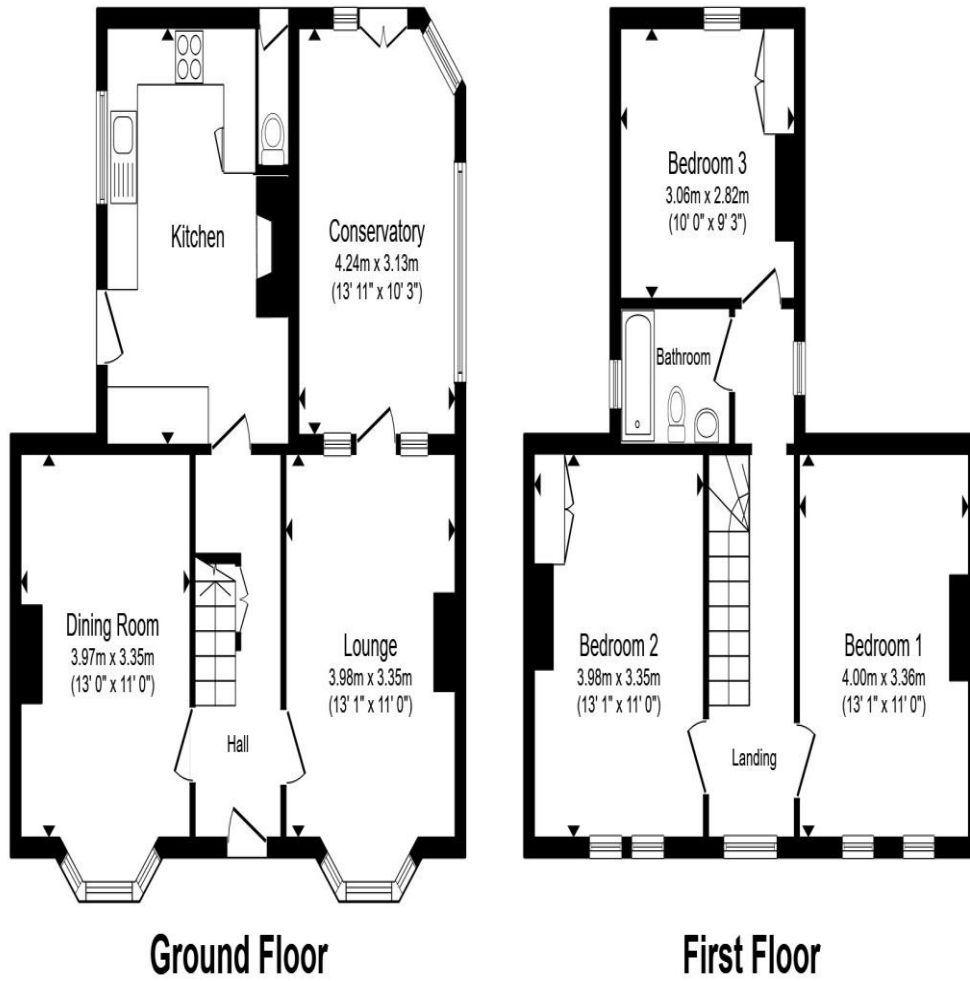


welcome to
Holmesland Lane, Botley Southampton

Constructed in 1903, this detached home offers versatile accommodation with significant potential to improve.

Benefits include three bedrooms, two reception rooms, fitted kitchen and a conservatory. There is also a generous garden and a driveway providing off road parking and access to the garage.





- Lounge**
- Dining Room**
- Kitchen/Breakfast Room**
- Conservatory**
- Bedroom 1**
- Bedroom 2**
- Bedroom 3**
- Bathroom**
- Externally**

Total floor area 115.6 m² (1,244 sq.ft.) approx

This floor plan is for illustrative purposes only. It is not drawn to scale. Any measurements, floor areas (including any total floor area), openings and orientation are approximate. No details are guaranteed, they cannot be relied upon for any purpose and they do not form part of any agreement. No liability is taken for any error, omission or misstatement. A party must rely upon its own inspection(s). Powered by www.propertybox.io



welcome to

Holmesland Lane, Botley Southampton

- Edwardian villa situated in the heart of Botley and benefiting from some character features
- Dual-aspect conservatory with direct access to the garden
- Family bathroom with three-piece bathroom suite
- Landscaped front and rear gardens with shrub borders, workshop, greenhouse and outside W.C.
- Driveway providing off-road parking and access to the garage

Tenure: Freehold EPC Rating: E

Council Tax Band: E

offers over

£625,000



Please note the marker reflects the postcode not the actual property

view this property online fox-and-sons.co.uk/Property/HEE106287



Property Ref:
HEE106287 - 0007

1. MONEY LAUNDERING REGULATIONS Intending purchasers will be asked to produce identification documentation at a later stage and we would ask for your co-operation in order that there is no delay in agreeing the sale. 2. These particulars do not constitute part or all of an offer or contract. 3. The measurements indicated are supplied for guidance only and as such must be considered incorrect. Potential buyers are advised to recheck measurements before committing to any expense. 4. We have not tested any apparatus, equipment, fixtures or services and it is in the buyers interest to check the working condition of any appliances. 5. Where an EPC, or a Home Report (Scotland only) is held for this property, it is available for inspection at the branch by appointment. If you require a printed version of a Home Report, you will need to pay a reasonable production charge reflecting printing and other costs. 6. We are not able to offer an opinion either written or verbal on the content of these reports and this must be obtained from your legal representative. 7. Whilst we take care in preparing these reports, a buyer should ensure that his/her legal representative confirms as soon as possible all matters relating to title including the extent and boundaries of the property and other important matters before exchange of contracts.





01489 785269



HedgeEnd@fox-and-sons.co.uk



Stirling House, 5 St. Johns Road, Hedge End,
SOUTHAMPTON, Hampshire, SO30 4AA



fox-and-sons.co.uk