

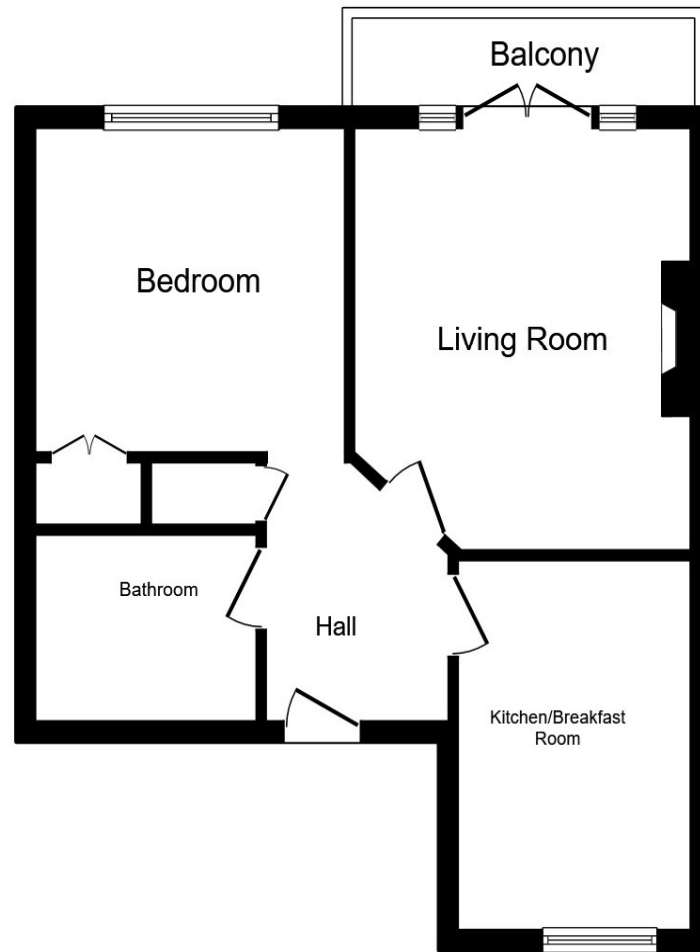


5 Ely Place Monkswell, Trumpington, Cambridge, CB2 9SS

welcome to Ely Place Monkswell, Trumpington

A first-floor one-bedroom apartment within an exclusive 55's and over development, ideal for those seeking INDEPENDENT LIVING with excellent ACCESS TO LOCAL AMENITIES and Addenbrooke's and Papworth Hospital, which are a short distance away.





Accommodation -

Ground Floor

First Floor

Entrance Hall

Kitchen

Living Room

Balcony

Double Bedroom

Bathroom

Outside

Agents Notes

Agents Notes Continued

Total floor area 44.0 sq.m. (474 sq.ft.) approx

This floor plan is for illustrative purposes only. It is not drawn to scale. Any measurements, floor areas (including any total floor area), openings and orientation are approximate. No details are guaranteed, they cannot be relied upon for any purpose and they do not form part of any agreement. No liability is taken for any error, omission or misstatement. A party must rely upon its own inspection(s). Powered by www.focalagent.com

welcome to Ely Place Monkswell, Trumpington

- One Bedroom First Floor Apartment
- Exclusive Development Designed for Residents Aged 55 and Over
- South Facing Balcony Overlooking Communal Gardens
- Resident Parking
- Newly Fitted Kitchen

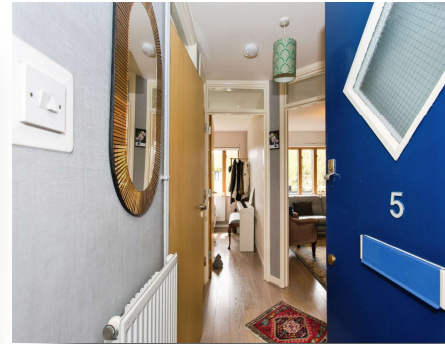
Tenure: Leasehold EPC Rating: C

Council Tax Band: A Service Charge: 1521.00

Ground Rent: Ask Agent

This is a Leasehold property with details as follows; Term of Lease 99 years from 21 Dec 2016. Should you require further information please contact the branch. Please Note additional fees could be incurred for items such as Leasehold packs.

£145,000



Please note the marker reflects the postcode not the actual property

view this property online [sequencehome.co.uk/Property/CBE100047](https://www.sequencehome.co.uk/Property/CBE100047)



Property Ref:
CBE100047 - 0009

1. MONEY LAUNDERING REGULATIONS Intending purchasers will be asked to produce identification documentation at a later stage and we would ask for your co-operation in order that there is no delay in agreeing the sale. 2. These particulars do not constitute part or all of an offer or contract. 3. The measurements indicated are supplied for guidance only and as such must be considered incorrect. Potential buyers are advised to recheck measurements before committing to any expense. 4. We have not tested any apparatus, equipment, fixtures or services and it is in the buyers interest to check the working condition of any appliances. 5. Where an EPC, or a Home Report (Scotland only) is held for this property, it is available for inspection at the branch by appointment. If you require a printed version of a Home Report, you will need to pay a reasonable production charge reflecting printing and other costs. 6. We are not able to offer an opinion either written or verbal on the content of these reports and this must be obtained from your legal representative. 7. Whilst we take care in preparing these reports, a buyer should ensure that his/her legal representative confirms as soon as possible all matters relating to title including the extent and boundaries of the property and other important matters before exchange of contracts.



01223 214400



cambridge@tylers.net



104 Cherry Hinton Road, CAMBRIDGE,
Cambridgeshire, CB1 7AJ



[sequencehome.co.uk](https://www.sequencehome.co.uk)