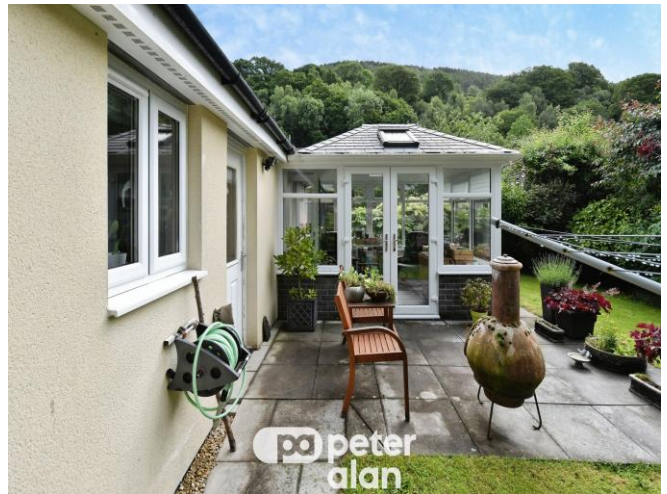




 peter  
alan

## Coventry Gardens, £250,000

- Beautiful garden
- Level access
- Wet room
- Off-road parking
- Conservatory
- Close to local amenities
- Great transport links
- EPC Rating: C



 2  1  1

 peter  
alan

01685 722223  
[merthytydfil@peteralan.co.uk](mailto:merthytydfil@peteralan.co.uk)



## About the property

Situated in a village location, this well-presented two-bedroom bungalow on Coventry Gardens offers comfortable, level access living complemented by beautiful surrounding views.

The accommodation briefly comprises an inviting entrance hallway leading to a bright and spacious living room, which provides direct access to a charming conservatory—perfect for enjoying the garden outlook throughout the year. The property also benefits from a fitted kitchen, two well-proportioned bedrooms, and a modern wet room, all thoughtfully laid out for practicality and ease of living.

Externally, the property benefits from off-road parking, along with well-maintained gardens to both the front and rear, offering excellent outdoor space for relaxation or entertaining.

Located within a peaceful village setting, the property is conveniently positioned close to local amenities and benefits from good transport links, making it ideal for those seeking a quieter lifestyle without compromising on accessibility.



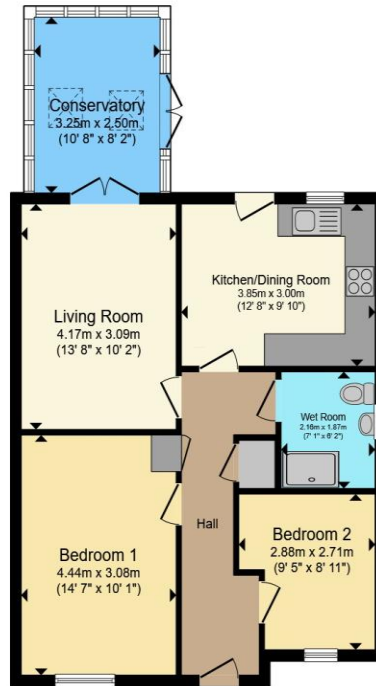
pa peter  
alan

Accommodation

01685 722223

merthyrdyfil@peteralan.co.uk

## Floorplan



Total floor area 68.8 m<sup>2</sup> (740 sq.ft.) approx

This floor plan is for illustrative purposes only. It is not drawn to scale. Any measurements, floor areas (including any total floor area), openings and orientation are approximate. No details are guaranteed, they cannot be relied upon for any purpose and they do not form part of any agreement. No liability is taken for any error, omission or misstatement. A party must rely upon its own inspection(s). Powered by [www.propertybox.io](http://www.propertybox.io)



## Important Information

Note while we endeavour to make our sales details accurate and reliable, if there is any point which is of particular interest to you, please contact the office and we will be pleased to confirm the position for you. We have not personally tested any apparatus, equipment, fixtures, fittings or services and cannot verify they are in working order or fit for their purposes. Nothing in these particulars is intended to indicate that carpets or curtains, furnishings or fittings, electrical goods (whether wired or not). Gas fires or light fittings or any other fixtures not expressly included form part of the property offered for sale. This computer generated Floorplan, if applicable, is intended as a general guide to the layout and design of the property. It is not to scale and should not be relied upon for dimensions. Tenure: We cannot confirm the tenure of the property as we have not had access to the legal documents. The buyer is advised to obtain verification from their solicitor or surveyor.

Peter Alan Limited is registered in England and Wales under company number 2073153, Registered Office is Cumbria House, 16-20 Hockliffe Street, Leighton Buzzard, Bedfordshire, LU7 1GN. VAT Registration Number is 500 2481 05. For activities relating to regulated mortgages and non-investment insurance contracts, Peter Alan Limited is an appointed representative of Connells Limited which is authorised and regulated by the Financial Conduct Authority. Connells Limited's Financial Services Register number is 302221. Most buy-to-let

