



**BORLAND ROAD**  
TEDDINGTON

**JACKSON-STOPS** 

## BORLAND ROAD, TEDDINGTON, TW11

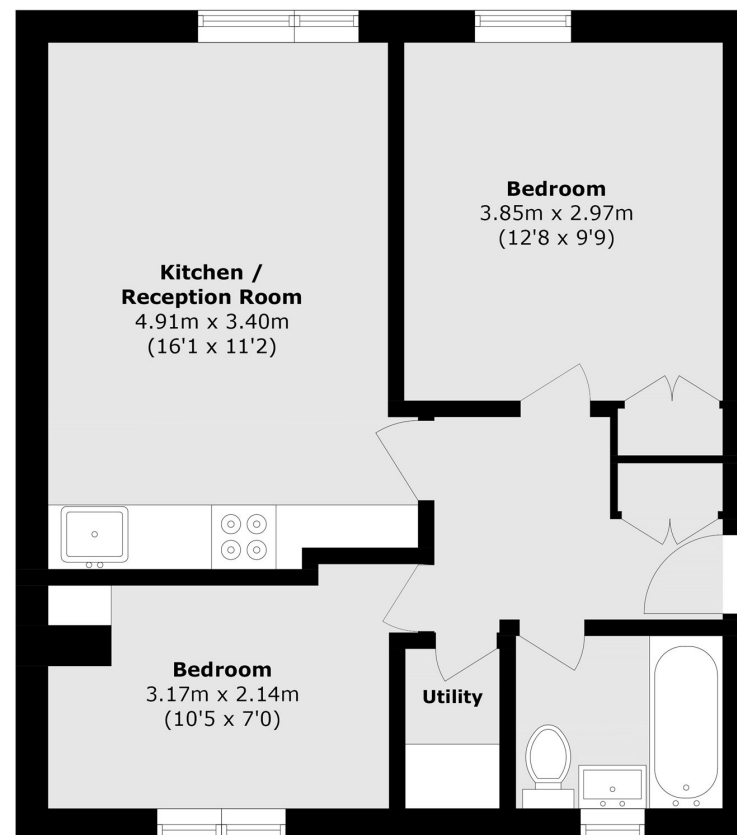
ASKING PRICE: £1,800 PCM

This ground floor two-bedroom apartment has just been redecorated throughout and is available for immediate occupation.

Borland Road is located in the heart of Teddington, close to shops and the local schools of Collis Primary and Sacred Heart.

### KEY FEATURES

- Available Immediately
- Close To Sacred Heart Primary School
- Two Double Bedrooms
- Communal Gardens
- Ground Floor



Total area (approx.): 44.9 sq. m (483.3 sq. ft)

Energy Rating: D. We aim to make our particulars both accurate and reliable. However they are not guaranteed; nor do they form part of an offer or contract. If you require clarification on any points then please contact us, especially if you are travelling some distance to view. Please note that appliances and heating systems have not been tested and therefore no warranties can be given as to their good working order.

ASKING PRICE: £1,800 PCM

TEDDINGTON

020 8943 9955

teddingtonlettings@jackson-stops.com

jackson-stops.co.uk

JACKSON-STOPS 