



**Sanforth Street, Chesterfield S41 8RU**

**welcome to**

## **Sanforth Street, Chesterfield**

A two bed home with a traditional layout, offering a bright front living room, a generous dining room and a practical rear kitchen with ground-floor W.C. Upstairs features two comfortable double bedrooms and a neatly arranged bathroom. The rear garden provides a private, functional space.

### **Living Room**

The living room sits at the front of the house and offers a well proportioned space that feels naturally welcoming. It's shape lends itself to a comfortable seating layout, with room for a sofa, chairs and media unit without feeling crowded. With its position at the front, it benefits from daylight through the main window, giving the room a bright, relaxed atmosphere.

### **Dining Room**

Directly behind the living room, the dining room mirrors its size and creates a natural continuation of the ground floor layout. It is generous enough for a family dining table and additional furniture, making it a sociable space for everyday meals or entertaining. Its central position in the home gives it a warm, connected feel.

### **Kitchen**

The kitchen sits at the rear of the property and is compact yet practical, arranged to make the most of its layout. There is space for essential appliances and work surfaces, with a layout that suits both cooking and day-to-day use. Its rear position makes it convenient for stepping out to the garden.

### **Downstairs W/C**

A small ground floor W.C. provides useful convenience for guests and everyday living. It is tucked away at the rear of the property so it doesn't interrupt the flow of the main living spaces.

### **Landing**

A central carpeted staircase leads to:

### **Bedroom 1**

The first bedroom sits above the living room at the front of the property and offers a comfortable

double room with balanced proportions. There is space for a bed, wardrobes and additional furniture, making it a calm and practical main bedroom.

### **Bedroom 2**

The second bedroom mirrors the first in size and layout, offering another well shaped double room. It works equally well as a second bedroom, a guest room or a spacious home office, depending on the needs of the household.

### **Bathroom**

The bathroom is positioned at the rear of the first floor and is arranged to accommodate a bath or shower, basin and toilet. It is neatly laid out and easily accessible from both bedrooms while remaining tucked away for privacy.

### **Rear Garden**

The property benefits from a traditional cottage style garden, which is the ideal blank canvass ready for transformation for the summer.

### **Agent's Note**

\*\*This property is being sold on behalf of a corporate client. It is marketed subject to obtaining the grant of probate and must remain on the market until contracts are exchanged. As part of a deceased's estate it may not be possible to provide answers to the standard property questionnaire. Please refer to the agent before viewing if you feel this may affect your buying decision.\*\*

### **Agent's Note**

\*\*Please note that any services, heating system or appliances have not been tested, and no warranty can be given or implied as to their working order. \*\*





***view this property online*** [williamhbrown.co.uk/Property/CSF104904](http://williamhbrown.co.uk/Property/CSF104904)



welcome to

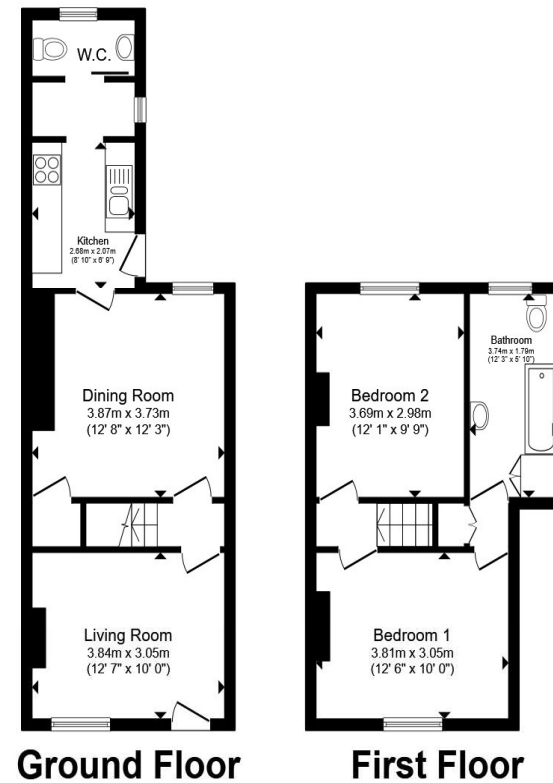
## Sanforth Street, Chesterfield

- Council Tax Band A
- Ideal FTB or Investment
- Popular Location
- Traditional Garden
- First Floor Bathroom

Tenure: Freehold EPC Rating: D

Council Tax Band: A

**£90,000**



Total floor area 74.4 m<sup>2</sup> (800 sq.ft.) approx

This floor plan is for illustrative purposes only. It is not drawn to scale. Any measurements, floor areas (including any total floor area), openings and orientation are approximate. No details are guaranteed, they cannot be relied upon for any purpose and they do not form part of any agreement. No liability is taken for any error, omission or misstatement. A party must rely upon its own inspection(s). Powered by [www.propertybox.io](http://www.propertybox.io)

  
william  
h brown

**view this property online** [williamhbrown.co.uk/Property/CSF104904](http://williamhbrown.co.uk/Property/CSF104904)



Property Ref:  
CSF104904 - 0004

1. MONEY LAUNDERING REGULATIONS Intending purchasers will be asked to produce identification documentation at a later stage and we would ask for your co-operation in order that there is no delay in agreeing the sale. 2. These particulars do not constitute part or all of an offer or contract. 3. The measurements indicated are supplied for guidance only and as such must be considered incorrect. Potential buyers are advised to recheck measurements before committing to any expense. 4. We have not tested any apparatus, equipment, fixtures or services and it is in the buyers interest to check the working condition of any appliances. 5. Where an EPC, or a Home Report (Scotland only) is held for this property, it is available for inspection at the branch by appointment. If you require a printed version of a Home Report, you will need to pay a reasonable production charge reflecting printing and other costs. 6. We are not able to offer an opinion either written or verbal on the content of these reports and this must be obtained from your legal representative. 7. Whilst we take care in preparing these reports, a buyer should ensure that his/her legal representative confirms as soon as possible all matters relating to title including the extent and boundaries of the property and other important matters before exchange of contracts.

William H Brown is a trading name of Sequence (UK) Limited which is registered in England and Wales under company number 4268443, Registered Office is Cumbria House, 16-20 Hockliffe Street, Leighton Buzzard, Bedfordshire, LU7 1GN. VAT Registration Number is 500 2481 05.

  
william h brown



**01246 204492**



[chesterfield@williamhbrown.co.uk](mailto:chesterfield@williamhbrown.co.uk)



6 Glumangate, CHESTERFIELD, Derbyshire, S40  
1TP



[williamhbrown.co.uk](http://williamhbrown.co.uk)