

FLETCHERS

ESTATE AGENTS



Ellerslie Road, W12

£595,000

A wonderfully renovated split level converted apartment with a south facing private balcony situated within an attractive Victorian building on a quiet, residential street in Shepherd's Bush.

This well presented property boasts two large double bedrooms with the primary suite benefiting an en suite and fitted wardrobes and an additional family bathroom. The flat has been stylishly modernised by the current owners and benefits from an open-plan kitchen/reception on the top floor with fitted appliances, quartz surfaces and wooden flooring. The reception room has access directly onto the private balcony and the property is wonderfully bright throughout.

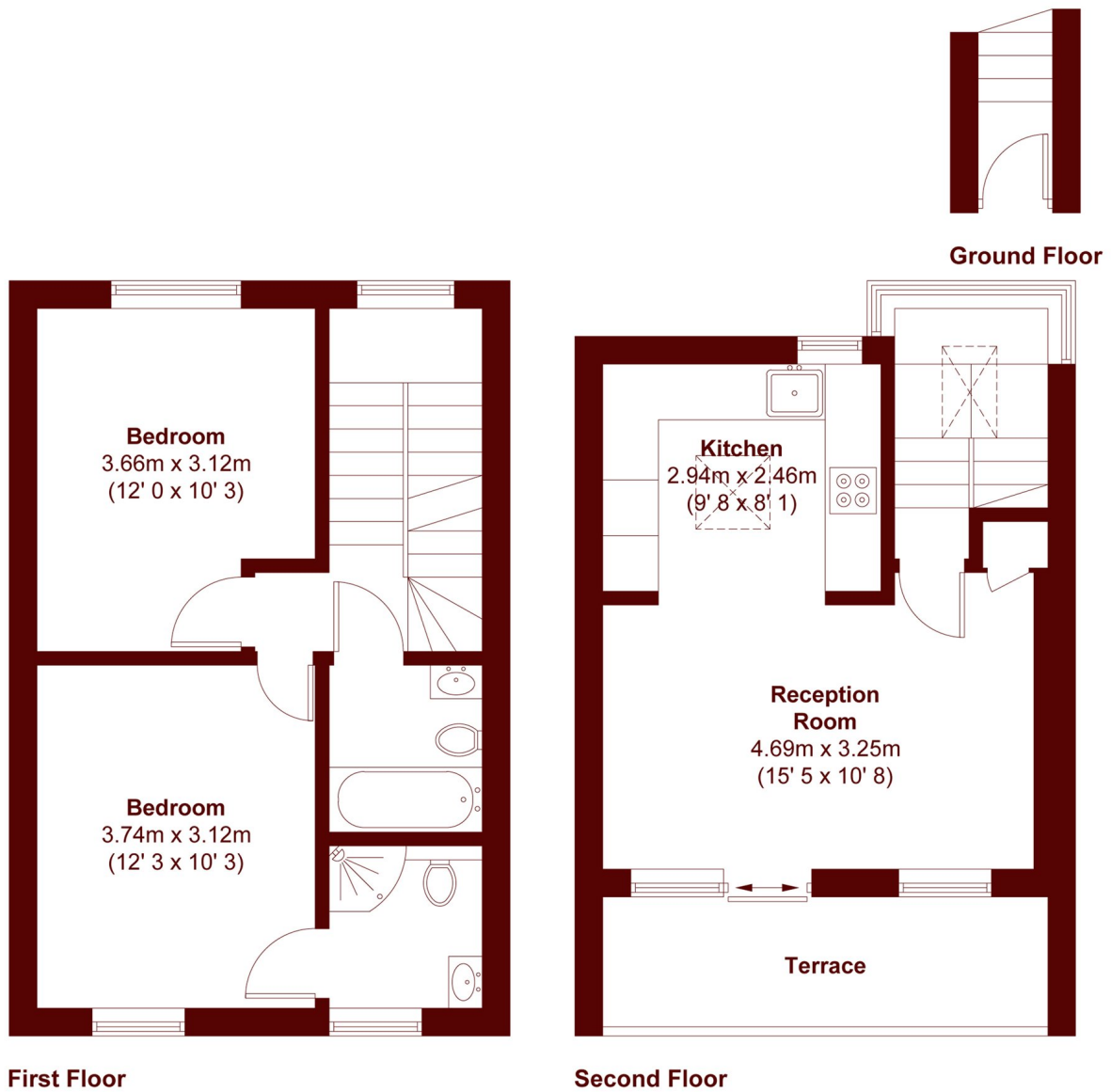
The property is offered to the market with a long lease and no onward chain perfect for first time buyers or a pied-à-terre.

Ellerslie Road is a quiet, residential street in the heart of Shepherd's Bush. It is Located exceptionally for the array of shops, restaurants and amenities of Westfield and those surrounding the development at the BBC Television Centre and White City House (Soho House Group). Shepherd's Bush market underground station (Circle, and Hammersmith & City lines) & both Wood Lane & White City underground stations (Central Line) are all only 0.5 Miles away offering excellent access in and out of town.

• Private South Facing Balcony • Two Double Bedrooms • Two Bathrooms • No Onward Chain • Split Level Conversion Flat • Excellent Condition Throughout •

FLETCHERS

ESTATE AGENTS



APPROX. GROSS INTERNAL FLOOR AREA 702 SQFT / 65.2 SQM
APPROX. GROSS EXTERNAL TERRACE AREA 62 SQFT / 5.8 SQM

Fletchers Brook Green Sales
144 Shepherds Bush Road, Hammersmith, London, W6 7PB
020 7603 1415
brookgreensales@fletcherestates.com

Energy Rating: C. We aim to make our particulars both accurate and reliable. However they are not guaranteed; nor do they form part of an offer or contract. If you require clarification on any points then please contact us, especially if you're traveling some distance to view. Please note that appliances and heating systems have not been tested and therefore no warranties can be given as to their good working order.