

est 1979

Jeremy
Leaf & Co.



Stokes Court, Diploma Avenue, London

£175,000

- Communal Gardens
- Communal Lounge
- One Double Bedroom
- Chain Free
- 24 Hour Warden Assisted
- Lease Approximately 60 Years
- Service Charge Approximately £2,600 p.a.
- Residents Parking

98 High Road, London, N2 9EB
020 8444 5222

eastfinchley@jeremyleaf.co.uk
<https://www.jeremyleaf.co.uk/>

Stokes Court, Diploma Avenue, London, N2 8NX

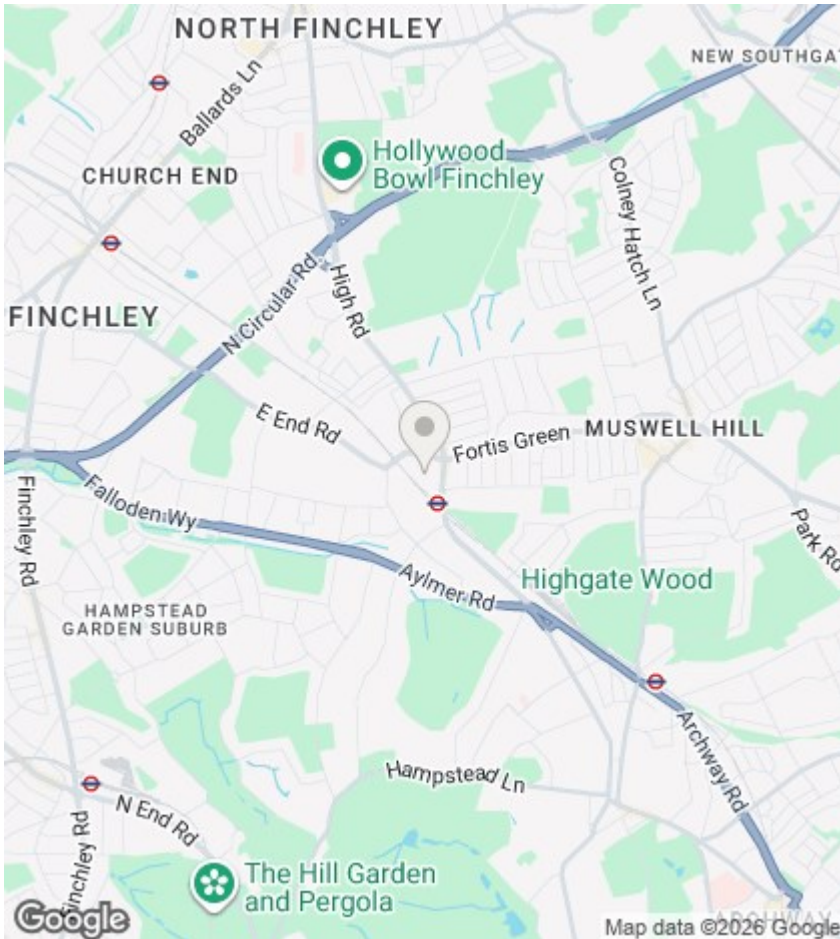
Of interest to over 60 year olds only, we offer a one double bedroom purpose built apartment situated on the third floor of this ever popular RETIREMENT block. Located within minutes of East Finchley underground station and all local amenities, the property further benefits from off street parking, two passenger lifts and has access to communal lounge/dining room/ outside patio area, and two on site wardens. Offered chain free.



Council Tax Band: C







Directions

Viewings

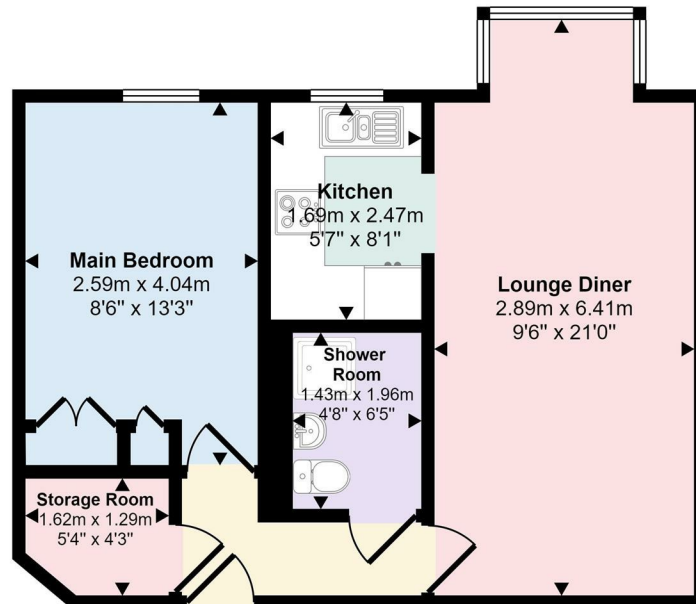
Viewings by arrangement only. Call 020 8444 5222 to make an appointment.

EPC Rating:

D

Energy Efficiency Rating		Current	Potential
Very energy efficient - lower running costs			
(92 plus) A			
(81-91) B			
(69-80) C			79
(55-68) D		56	
(39-54) E			
(21-38) F			
(1-20) G			
Not energy efficient - higher running costs			
England & Wales		EU Directive 2002/91/EC	

Approx Gross Internal Area
42 sq m / 455 sq ft



Floorplan

This floorplan is only for illustrative purposes and is not to scale. Measurements of rooms, doors, windows, and any items are approximate and no responsibility is taken for any error, omission or mis-statement. Icons of items such as bathroom suites are representations only and may not look like the real items. Made with Made Snappy 360.