

Lambourne Carmody

Together, we will get you moving

Ashcroft Court, Burnham, Buckinghamshire, SL1 8JT



£479,950 – FREEHOLD – EPR (D68)

OFFERED WITH NO ONWARD CHAIN & LOCATED ON THE FAVOURABLE ASHCROFT COURT DEVELOPMENT IN NORTH BURNHAM IS THIS SPACIOUS 3/4 BEDROOM TERRACE HOUSE. FEATURING MODERN KITCHEN, 24' x 21' L-SHAPED LOUNGE, DOWNSTAIRS SHOWER ROOM, MASTER BEDROOM WITH BALCONY & GARAGE.

VIEWINGS HIGHLY RECOMMENDED.

Opening Times: Our office is open 9.00am to 6.30pm Monday to Friday, 9.00am to 4.30pm Saturdays.

422 Bath Road, Crippenham, Berkshire, SL1 6JA T: 01628 661138 E: crippenham@lambournecarmody.co.uk W: www.lambournecarmody.co.uk

Residential Sales * Lettings & Property Management * Commercial * Valuations * Mortgage Advice



Accommodation (All measurements are approximate)

Entrance Hall: Door to either bedroom 4/study or office, ceramic tile flooring in hallway, door to kitchen, lounge & shower room.

Bedroom 4/Reception Room: 12'3 x 9'2 Front aspect double glazed window & panelled radiator.

Shower/Cloak Room: Shower cubicle, low level WC, hand wash basin, tiled walls & flooring, heated towel rail & good size storage cupboard.

L Shaped Lounge: 24'1 x 21'11 Patio door to rear garden, open through staircase to first floor, TV point, door to kitchen x 3 panel radiators, French doors to rear garden.



Dining Room: 9'8 x 8'5 Panelled radiator.

Kitchen: 10'9 x 8'10 Front aspect double glazed window, eye & base level units with rolled edge work surfaces, stainless steel sink unit, gas hob & electric oven, integrated dish washer & washing machine, space for fridge freezer & ceramic tile flooring.



First Floor

Landing: Spacious with doors to all rooms, built in cupboard housing boiler & hot water tank & access to loft.

Bathroom: Frosted front aspect double glazed window, panel bath with electric shower & screen, low level WC, vanity sink unit.



Bedroom 1: 12'9 x 11'4 Rear aspect double glazed window, panelled radiator, built in double wardrobe & door to balcony.

Bedroom 2: 12'8 x 9 Rear aspect double glazed window, built in double wardrobe & panelled radiator.

Bedroom 3: 8'10 x 8'3 Front aspect double glazed window, built in double wardrobe & panelled radiator.

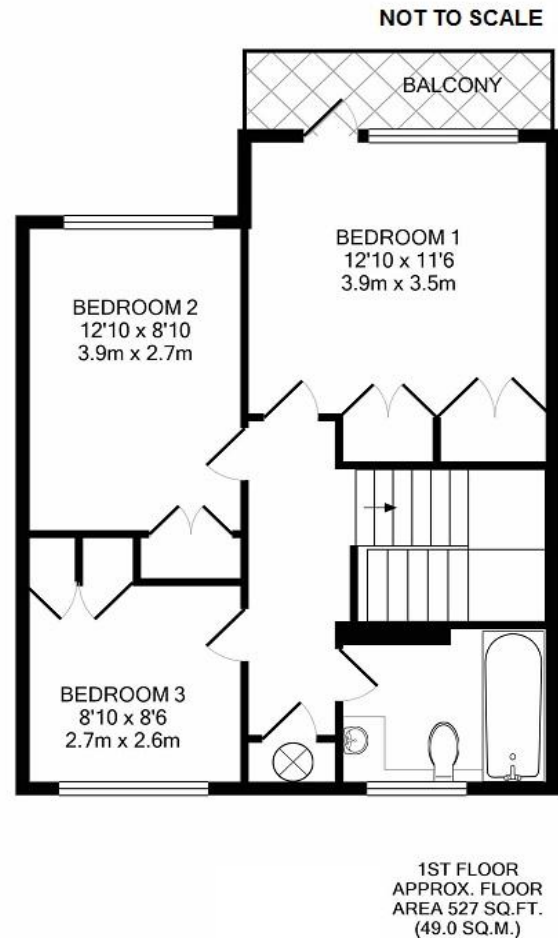
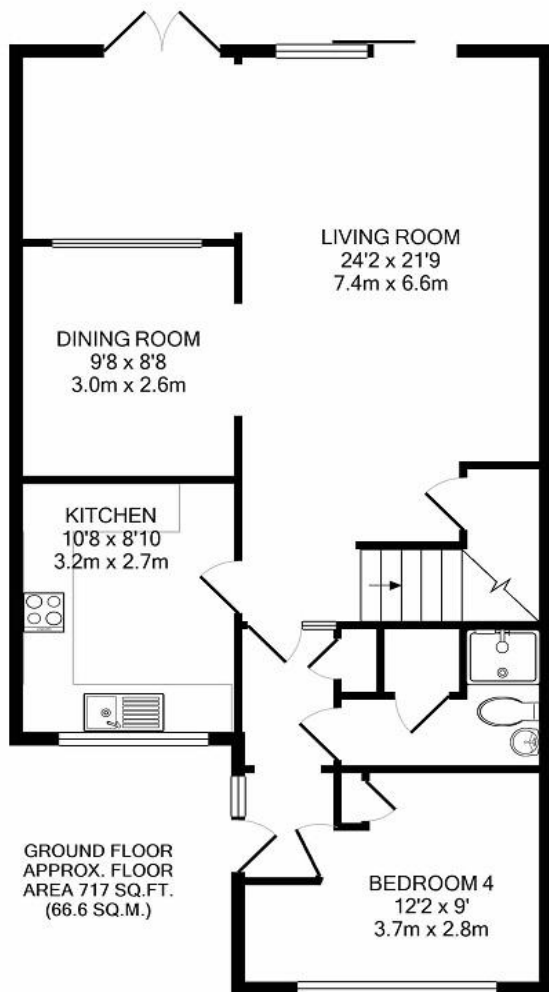
OUTSIDE:

Front Garden: Courtyard style with outside tap.

Rear Garden: Southernly aspect, patio area, outside water tap, laid to lawn, panel enclosed with pedestrian rear access gate.



Garage: In block.



ASHCROFT COURT, BURNHAM, BUCKINGHAMSHIRE, SL1 8JT
TOTAL APPROX. FLOOR AREA 1245 SQ.FT. (115.7 SQ.M.)

Whilst every attempt has been made to ensure the accuracy of the floor plan contained here, measurements of doors, windows, rooms and any other items are approximate and no responsibility is taken for any error, omission, or mis-statement. This plan is for illustrative purposes only and should be used as such by any prospective purchaser. The services, systems and appliances shown have not been tested and no guarantee as to their operability or efficiency can be given
Made with Metropix ©2021

PLEASE NOTE: THESE PARTICULARS ARE INTENDED AS A GENERAL GUIDE ONLY AND DO NOT CONSTITUTE ANY PART OF AN OFFER, ALL POTENTIAL PURCHASERS/TENANTS SHOULD SATISFY THEMSELVES THAT ALL INFORMATION IS STATED IS CORRECT PRIOR TO EXCHANGE OF CONTRACTS. WE DO NOT TEST ANY APPLIANCES AND ALL MEASUREMENTS ARE APPROXIMATE AND SHOULD NOT BE RELIED UPON FOR CARPETS AND FURNISHINGS.