



Wesley Croft, Leeds LS11 8RW

welcome to

Wesley Croft, Leeds

THREE bedroom SEMI DETACHED DORMER BUNGALOW, WELL PRESENTED throughout, DRIVEWAY to the front, GARDEN to the side, LIVING ROOM, KITCHEN, CONSERVATORY, TWO GROUND FLOOR BEDROOMS, HOUSE BATHROOM, ONE first floor BEDROOM.

Inner Hallway

Storage cupboard.

Living Room

uPVC double glazed window and door leading into the conservatory, spiral staircase leading to bedroom one.

Kitchen

Has a fully fitted kitchen with a range of wall and base mounted units with complementary work surfaces over, incorporating sink and drainer, electric oven, induction hob, integrated dishwasher and microwave, space for fridge freezer and washing machine, uPVC double glazed window to the side, Composite door to the side and open access into the conservatory.

Conservatory

uPVC double glazed windows, log burner, uPVC double glazed French doors leading out to the rear garden.

Bedroom Two

uPVC double glazed window to the front, gas central heating radiator.

Bedroom Three

uPVC double glazed window to the front, gas central heating radiator.

House Bathroom

A three piece bathroom suite comprising of bath, low level flush WC, wash hand basin, tiled floor, part tiled walls, heated towel rail, uPVC double glazed window to the side.

Bedroom One

uPVC double glazed windows to front and side, two

gas central heating radiators, walk-in wardrobe.

Exterior

Driveway to the front and garden area to the side with artificial grass.





view this property online williamhbrown.co.uk/Property/MLY111904



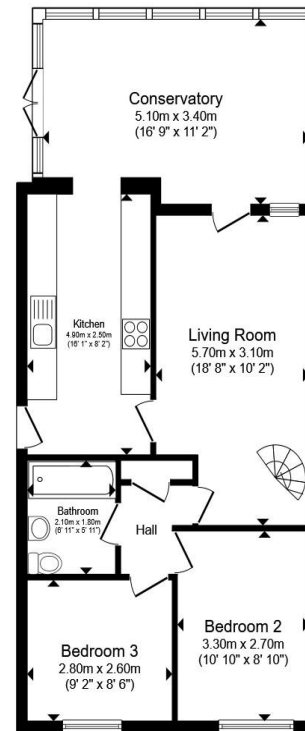
welcome to

Wesley Croft, Leeds

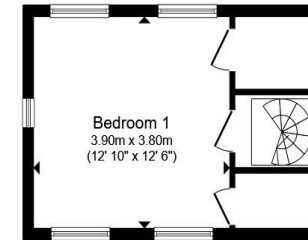
- Three bedroom semi detached dormer bungalow
- Well presented throughout
- Conservatory
- Two ground floor bedrooms
- Driveway to the front

Tenure: Freehold EPC Rating: Awaited
Council Tax Band: B

£250,000



Ground Floor



First Floor

Total floor area 94.8 m² (1,021 sq.ft.) approx

This floor plan is for illustrative purposes only. It is not drawn to scale. Any measurements, floor areas (including any total floor area), openings and orientation are approximate. No details are guaranteed, they cannot be relied upon for any purpose and they do not form part of any agreement. No liability is taken for any error, omission or misstatement. A party must rely upon its own inspection(s). Powered by www.propertybox.io



view this property online williamhbrown.co.uk/Property/MLY111904



Property Ref:
MLY111904 - 0004

1. MONEY LAUNDERING REGULATIONS Intending purchasers will be asked to produce identification documentation at a later stage and we would ask for your co-operation in order that there is no delay in agreeing the sale. 2. These particulars do not constitute part or all of an offer or contract. 3. The measurements indicated are supplied for guidance only and as such must be considered incorrect. Potential buyers are advised to recheck measurements before committing to any expense. 4. We have not tested any apparatus, equipment, fixtures or services and it is in the buyers interest to check the working condition of any appliances. 5. Where an EPC, or a Home Report (Scotland only) is held for this property, it is available for inspection at the branch by appointment. If you require a printed version of a Home Report, you will need to pay a reasonable production charge reflecting printing and other costs. 6. We are not able to offer an opinion either written or verbal on the content of these reports and this must be obtained from your legal representative. 7. Whilst we take care in preparing these reports, a buyer should ensure that his/her legal representative confirms as soon as possible all matters relating to title including the extent and boundaries of the property and other important matters before exchange of contracts.

William H Brown is a trading name of Sequence (UK) Limited which is registered in England and Wales under company number 4268443, Registered Office is Cumbria House, 16-20 Hockliffe Street, Leighton Buzzard, Bedfordshire, LU7 1GN. VAT Registration Number is 500 2481 05.

 **william h brown**



0113 253 7100



Morley@williamhbrown.co.uk



80 Queen Street, Morley, LEEDS, West Yorkshire, LS27 9BP



williamhbrown.co.uk