



# 221 Willesden Lane

, London, NW6 7PS

£475,000

Nestled in the vibrant area of Willesden Lane, London, this purpose-built flat offers a spacious and comfortable living environment, perfect for families or professionals seeking a modern lifestyle. Spanning an impressive 1,249 square feet, the property boasts four well-proportioned bedrooms, providing ample space for relaxation and privacy.

The flat features a welcoming reception room, ideal for entertaining guests or enjoying quiet evenings at home. With two bathrooms, the property ensures convenience for all residents, making morning routines and guest visits a breeze.

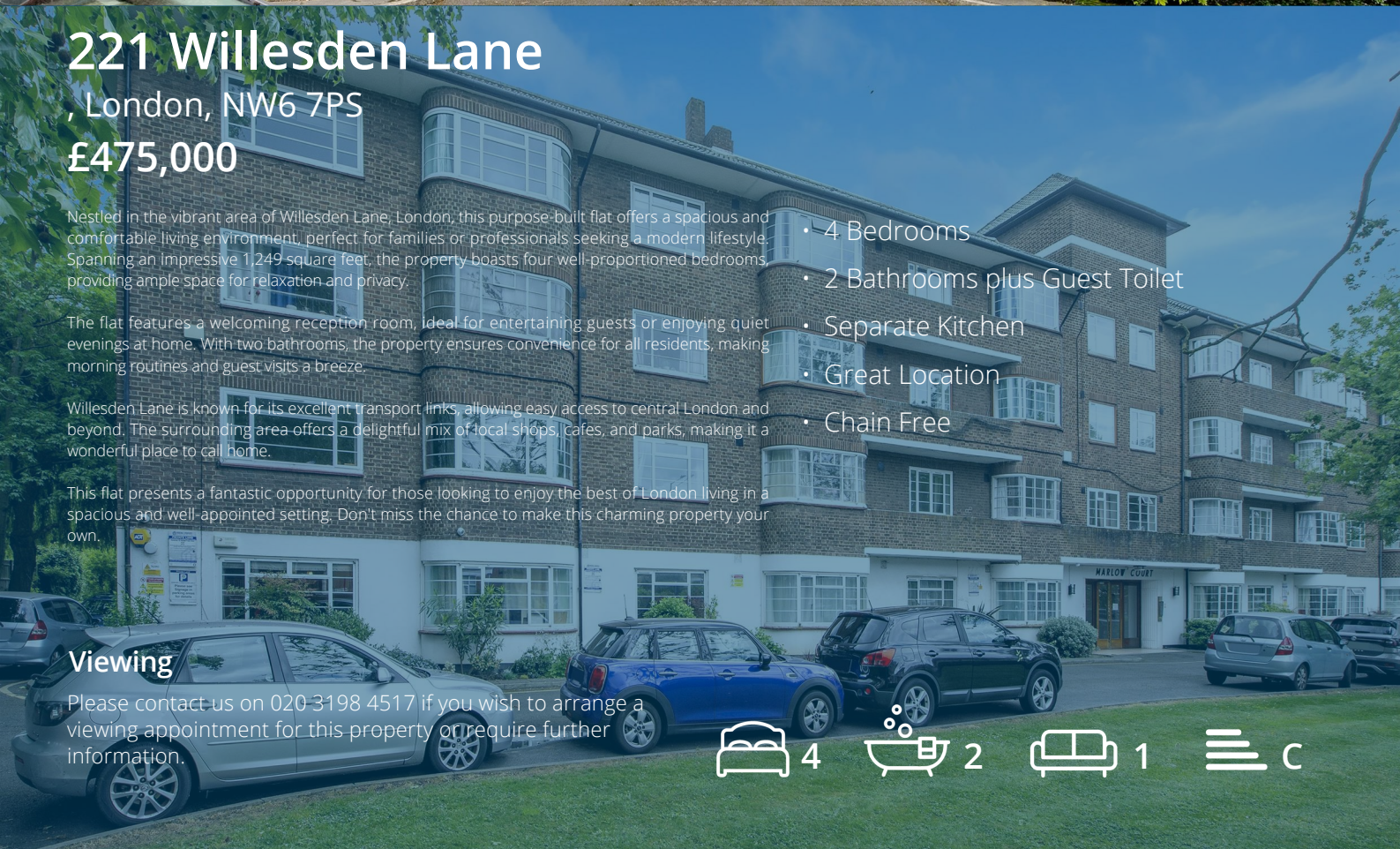
Willessden Lane is known for its excellent transport links, allowing easy access to central London and beyond. The surrounding area offers a delightful mix of local shops, cafes, and parks, making it a wonderful place to call home.

This flat presents a fantastic opportunity for those looking to enjoy the best of London living in a spacious and well-appointed setting. Don't miss the chance to make this charming property your own.

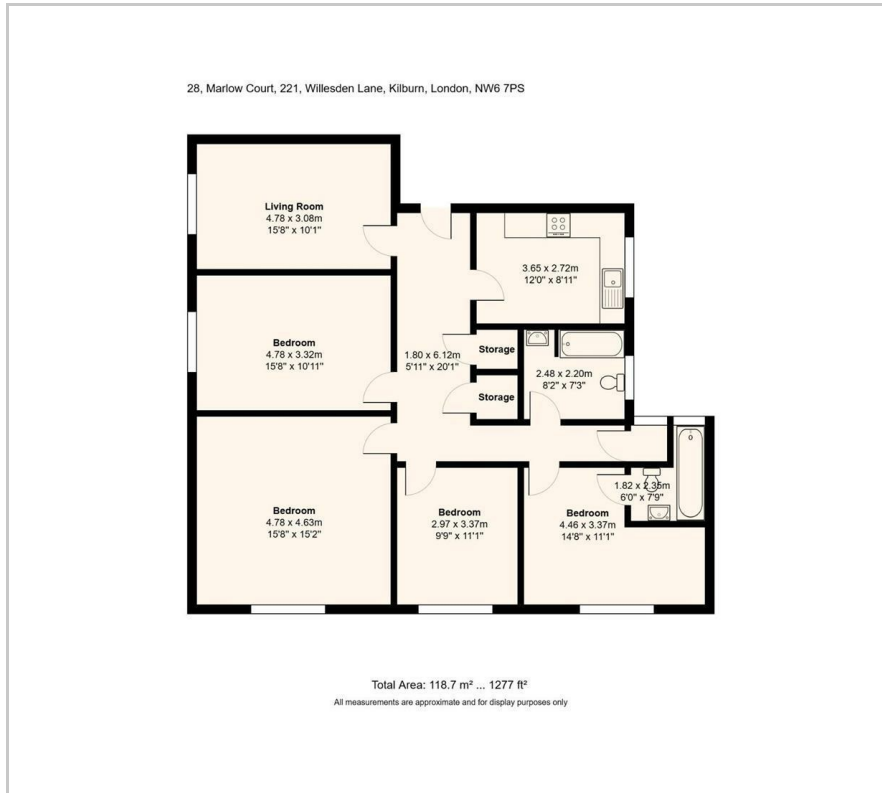
- 4 Bedrooms
- 2 Bathrooms plus Guest Toilet
- Separate Kitchen
- Great Location
- Chain Free

## Viewing

Please contact us on 020 3198 4517 if you would like to arrange a viewing appointment for this property or require further information.



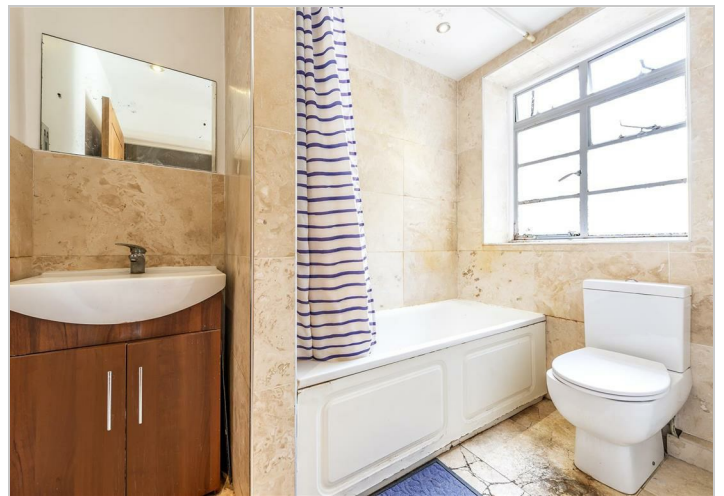
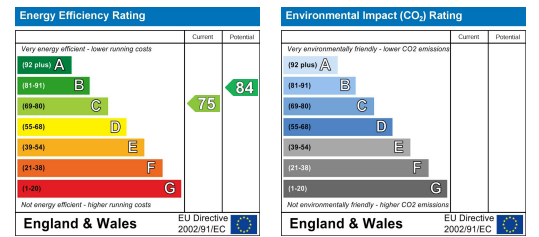
## Floor Plan



## Area Map



## Energy Efficiency Graph



These particulars, whilst believed to be accurate are set out as a general outline only for guidance and do not constitute any part of an offer or contract. Intending purchasers should not rely on them as statements of representation of fact, but must satisfy themselves by inspection or otherwise as to their accuracy. No person in this firm's employment has the authority to make or give any representation or warranty in respect of the property.