



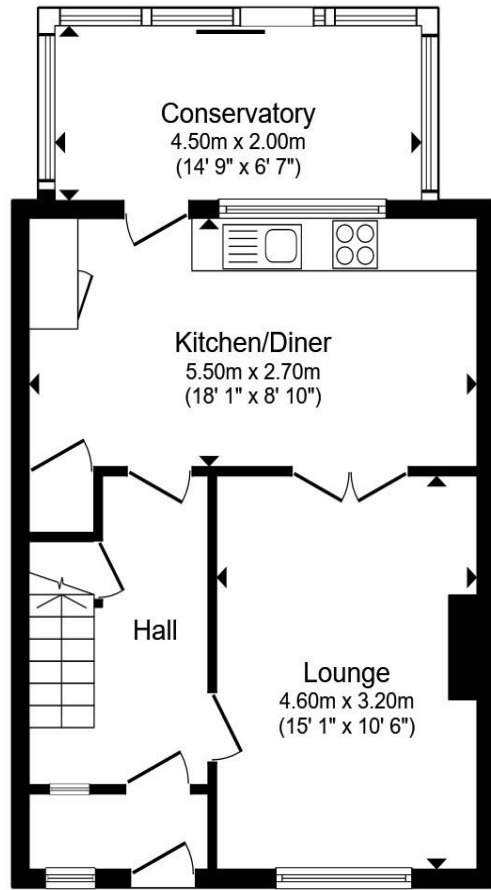
**Long Ground, Frome, BA11 1PJ**

**welcome to**

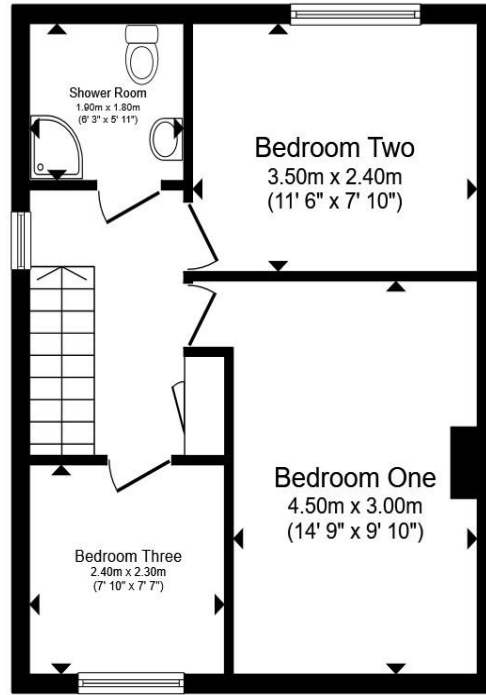
**Long Ground, Frome**

A welcoming home featuring a bright lounge, open kitchen/diner and a light-filled conservatory overlooking the generous rear garden. Upstairs offers two double bedrooms, a single and a shower room. Attractive front garden and mature rear garden complete the picture. With garage and driveway parking.

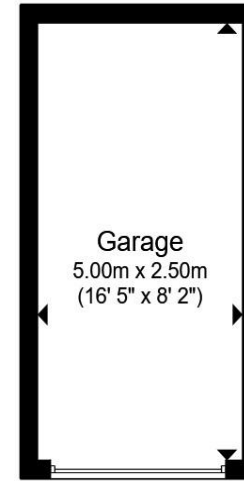




**Ground Floor**



**First Floor**



**Garage**

**Porch**

**Hall**

**Lounge**

15' 1" x 10' 6" ( 4.60m x 3.20m )

**Kitchen/Diner**

18' 1" x 8' 10" ( 5.51m x 2.69m )

**Conservatory**

14' 9" x 6' 7" ( 4.50m x 2.01m )

**Landing**

**Bedroom One**

14' 9" x 9' 10" ( 4.50m x 3.00m )

**Bedroom Two**

11' 6" x 7' 10" ( 3.51m x 2.39m )

**Bedroom Three**

7' 10" x 7' 7" ( 2.39m x 2.31m )

**Shower Room**

6' 3" x 5' 11" ( 1.91m x 1.80m )

**Front Garden**

**Rear Garden**

**Garage**

Total floor area 104.3 m<sup>2</sup> (1,123 sq.ft.) approx

This floor plan is for illustrative purposes only. It is not drawn to scale. Any measurements, floor areas (including any total floor area), openings and orientation are approximate. No details are guaranteed, they cannot be relied upon for any purpose and they do not form part of any agreement. No liability is taken for any error, omission or misstatement. A party must rely upon its own inspection(s). Powered by [www.propertybox.io](http://www.propertybox.io)

welcome to

## Long Ground, Frome

- NO ONWARD CHAIN
- Three Good Size Bedrooms
- Spacious Front Lounge
- Open Kitchen/Diner
- Light-Filled Conservatory

Tenure: Freehold EPC Rating: B  
Council Tax Band: C

**£300,000**



Please note the marker reflects the postcode not the actual property

**view this property online** [allenandharris.co.uk/Property/FRO110868](https://www.allenandharris.co.uk/Property/FRO110868)



Property Ref:  
FRO110868 - 0005

1. MONEY LAUNDERING REGULATIONS Intending purchasers will be asked to produce identification documentation at a later stage and we would ask for your co-operation in order that there is no delay in agreeing the sale. 2. These particulars do not constitute part or all of an offer or contract. 3. The measurements indicated are supplied for guidance only and as such must be considered incorrect. Potential buyers are advised to recheck measurements before committing to any expense. 4. We have not tested any apparatus, equipment, fixtures or services and it is in the buyers interest to check the working condition of any appliances. 5. Where an EPC, or a Home Report (Scotland only) is held for this property, it is available for inspection at the branch by appointment. If you require a printed version of a Home Report, you will need to pay a reasonable production charge reflecting printing and other costs. 6. We are not able to offer an opinion either written or verbal on the content of these reports and this must be obtained from your legal representative. 7. Whilst we take care in preparing these reports, a buyer should ensure that his/her legal representative confirms as soon as possible all matters relating to title including the extent and boundaries of the property and other important matters before exchange of contracts.

 allen & harris



**01373 462999**



[Frome@allenandharris.co.uk](mailto:Frome@allenandharris.co.uk)



9 The Bridge, FROME, Somerset, BA11 1AR



[allenandharris.co.uk](https://www.allenandharris.co.uk)