



Wycliffe Street, Rock Ferry, Birkenhead, CH42 3YD

welcome to

Wycliffe Street, Rock Ferry Birkenhead

The excitement of dreams coming true is beyond the description of words, you will need to view this lovely home sweet home to turn your dream home into a reality!! This three-bedroom house is in a league of its own, so call us today to secure a viewing before it's too late....



Property Description

A Hidden Gem in a Sought-After Setting – Don't Miss This One!

Tucked away in a highly sought after location for both investors and first-time buyers, this fantastic three-bedroom mid-terrace home is a rare find that's sure to impress from the moment you step inside.

Welcoming you in is a bright entrance hallway – perfect for relaxing evenings. Flowing effortlessly through, you'll find a separate dining room, ideal for hosting family and friends, alongside a stunning newly fitted kitchen that's both stylish and practical – a real heart of the home.

Upstairs, the property continues to shine with two generous double bedrooms, a well-proportioned single bedroom, and a fresh, modern shower room filled with natural light – creating a calm and airy space to start your day.

Outside, the low-maintenance rear yard offers the perfect spot to unwind without the upkeep, more relaxing, less gardening, while on-street parking adds everyday convenience.

This is a home that truly needs to be seen to be fully appreciated – whether you're a first-time buyer, growing family, or savvy investor.

Early viewing is highly recommended – contact the Prenton office today and book your viewing before it's gone!

Porch

Entrance Hall

Door to the front and radiator.

Lounge

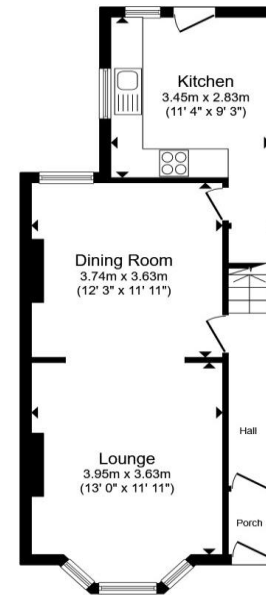
13' x 11' 11" (3.96m x 3.63m)

Front facing double glazed bay window and radiator.

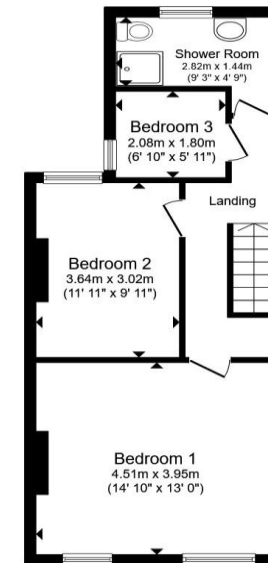
Dining Room

12' 3" x 11' 11" (3.73m x 3.63m)

Double glazed window with rear facing aspect and radiator.



Ground Floor



First Floor

Total floor area 91.6 m² (986 sq.ft.) approx

This floor plan is for illustrative purposes only. It is not drawn to scale. Any measurements, floor areas (including any total floor area), openings and orientation are approximate. No details are guaranteed, they cannot be relied upon for any purpose and they do not form part of any agreement. No liability is taken for any error, omission or misstatement. A party must rely upon its own inspection(s). Powered by www.propertybox.io



Kitchen

11' 4" x 9' 3" (3.45m x 2.82m)

Rear and side facing double glazed windows, wall and base units, worktops, cooker hood, gas hob, electric oven, boiler, sink drainer, plumbing for a washing machine, door to side.

Landing

Bedroom One

14' 10" x 13' (4.52m x 3.96m)

Bedroom Two

11' 11" x 9' 11" (3.63m x 3.02m)

With rear facing double glazed window.

Bedroom Three

6' 10" x 5' 11" (2.08m x 1.80m)

Side facing double glazed window.

Shower Room

Rear facing double glazed window, open shower cubicle, wash hand basin with vanity, and w.c.

Yard

Patio, artificial lawn, side border and Lean-to/pergola



view this property online jonesandchapman.co.uk/Property/PTN116743



welcome to

Wycliffe Street, Rock Ferry Birkenhead

- Three Bedroom Mid Terraced House
- Lounge
- Dining Room
- Kitchen
- Shower Room

Tenure: Freehold EPC Rating: D

Council Tax Band: A

£130,000



Please note the marker reflects the postcode not the actual property

[view this property online jonesandchapman.co.uk/Property/PTN116743](https://www.jonesandchapman.co.uk/Property/PTN116743)



Property Ref:
PTN116743 - 0002

1. MONEY LAUNDERING REGULATIONS Intending purchasers will be asked to produce identification documentation at a later stage and we would ask for your co-operation in order that there is no delay in agreeing the sale. 2. These particulars do not constitute part or all of an offer or contract. 3. The measurements indicated are supplied for guidance only and as such must be considered incorrect. Potential buyers are advised to recheck measurements before committing to any expense. 4. We have not tested any apparatus, equipment, fixtures or services and it is in the buyers interest to check the working condition of any appliances. 5. Where an EPC, or a Home Report (Scotland only) is held for this property, it is available for inspection at the branch by appointment. If you require a printed version of a Home Report, you will need to pay a reasonable production charge reflecting printing and other costs. 6. We are not able to offer an opinion either written or verbal on the content of these reports and this must be obtained from your legal representative. 7. Whilst we take care in preparing these reports, a buyer should ensure that his/her legal representative confirms as soon as possible all matters relating to title including the extent and boundaries of the property and other important matters before exchange of contracts.


jones & chapman



0151 608 2287



Prenton@jonesandchapman.co.uk



349 Woodchurch Road, Prenton, PRENTON,
Merseyside, CH42 8PE



[jonesandchapman.co.uk](https://www.jonesandchapman.co.uk)