

# SNELLERS

ESTATE AGENTS



## Templar Place, TW12

£350,000

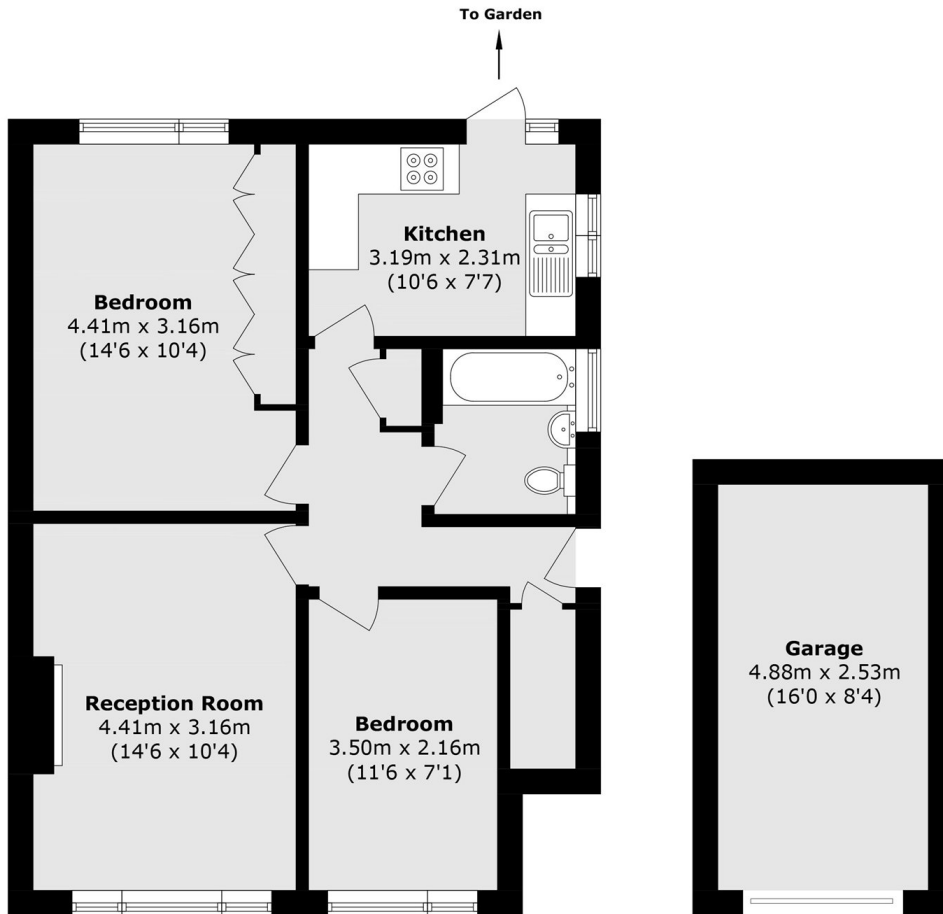
Offers over £350,000. A well presented, two bedroom ground floor maisonette including front and rear private gardens, a long lease, parking, a garage and the added bonus of no onward chain.

Centrally situated within Hampton, Templar Place is a popular residential cul-de-sac ideally located for Carlisle Park. Bushy Park, Hampton Open Air Swimming Pool, Hampton Hill High Street and Hampton Village including the train station and local schools are also nearby.

- Ground Floor Maisonette • Two Bedrooms • Private Gardens •
- No Chain • Parking • Garage •

# SNELLERS

ESTATE AGENTS



**Ground Floor**

**Ground Floor**

Total area (approx.): 57.1 sq. m (614.6 sq. ft)  
(Excluding Garage)

Garage area (approx.): 12.3 sq. m (132.3 sq. ft)

Snellers Hampton Hill Sales  
197-201 High Street  
Hampton Hill  
TW12 1NL  
020 8783 0083  
hamptonsales@snellers.co.uk

Energy Rating: C We aim to make our particulars both accurate and reliable. However they are not guaranteed; nor do they form part of an offer or contract. If you require clarification on any points then please contact us, especially if you're traveling some distance to view. Please note that appliances and heating systems have not been tested and therefore no warranties can be given as to their good working order