



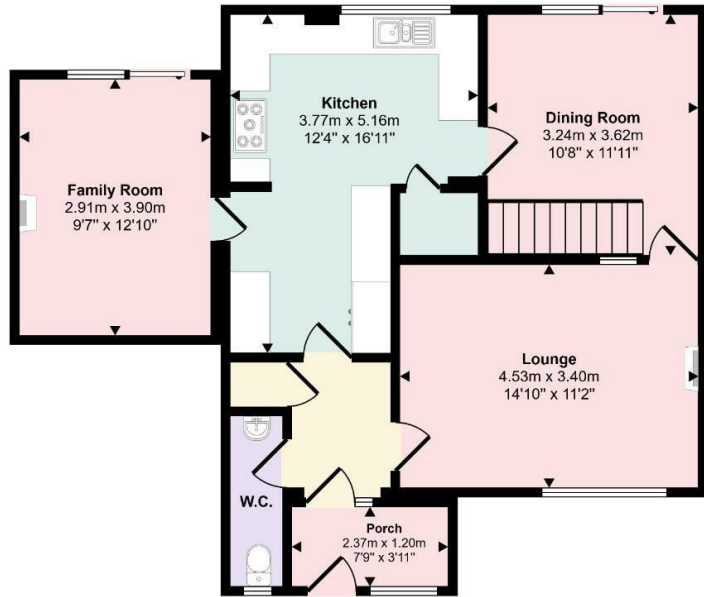
12 BERKELEY CLOSE NORTHAMPTON, NN1 5BJ

£395,000
FREEHOLD

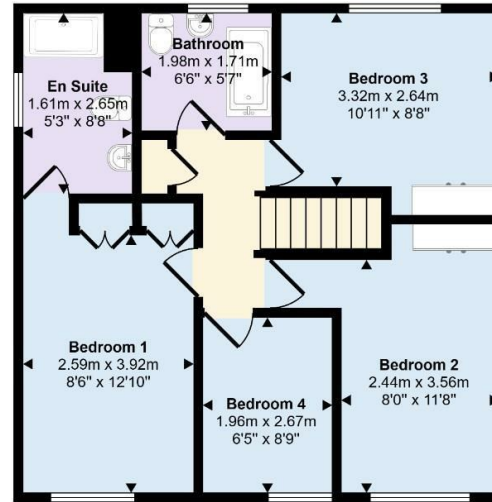
Stonhills are pleased to offer this four bedroom detached family home located within walking distance of Northampton General Hospital, St Andrews Hospital and Northampton town centre. The accommodation includes a lounge, dining room, family room, kitchen, WC, bedroom one with ensuite, three further bedrooms and a family bathroom. Outside there are landscaped gardens, off road parking and a garage. Conveniently located close to local amenities, schools, the train station and major road links.

 **stonhills**
LAND & ESTATE AGENTS

Approx Gross Internal Area
121 sq m / 1304 sq ft

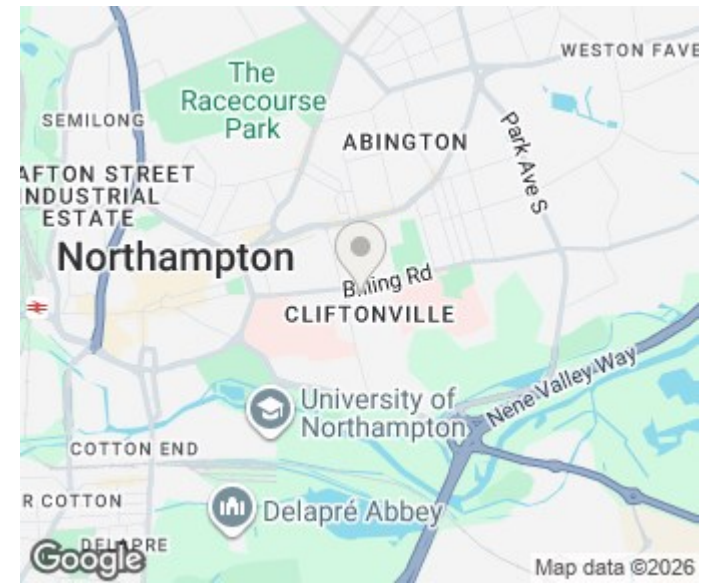


Ground Floor
Approx 69 sq m / 740 sq ft



First Floor
Approx 52 sq m / 564 sq ft

This floorplan is only for illustrative purposes and is not to scale. Measurements of rooms, doors, windows, and any items are approximate and no responsibility is taken for any error, omission or mis-statement. Icons of items such as bathroom suites are representations only and may not look like the real items. Made with Made Snappy 360.



Energy Efficiency Rating		
	Current	Potential
Very energy efficient - lower running costs		
(92 plus) A		
(81-91) B		
(69-80) C		
(55-68) D		
(39-54) E		
(21-38) F		
(1-20) G		
Not energy efficient - higher running costs		
England & Wales	EU Directive 2002/91/EC	

Agents Note: Whilst every care has been taken to prepare these particulars, they are for guidance purposes only. All measurements are approximate and are for general guidance purposes only and whilst every care has been taken to ensure their accuracy, they should not be relied upon and potential buyers/tenants are advised to recheck the measurements

Northampton Office Sales
39 St Giles Street
Northampton
Northamptonshire
NN1 1JF

01604 624424
lewis@stonhills.co.uk
<https://www.stonhills.co.uk/>

