



Grantlea Gamberlake, Axminster EX13 5JZ



welcome to

Grantlea Gamberlake, Axminster

Fox & Sons are delighted to bring to the market this lovely three bedroom semi detached home, located on a quiet street yet still within close proximity to the town centre of the historic market town of Axminster.

Entrance Hallway

entered via uPVC front door with double glazed opaque glass insert, uPVC double glazed window to side aspect, understairs storage cupboard, stairs rising to first floor, radiator, ceiling light point

Lounge

13' 5" max x 12' max (4.09m max x 3.66m max)
uPVC double glazed bay window to front aspect with views to hills beyond, log burner set within feature surround, ceiling light point, radiator

Kitchen/Dining Room

18' max x 11' 8" max (5.49m max x 3.56m max)
uPVC double glazed double doors to rear aspect leading to patio, uPVC double glazed window to side aspect, door through to utility room, range of wall and base units with worktop over and tiled splashback, island unit and breakfast bar, integrated electric oven with electric hob and cooker hood over, 1.5 stainless steel drainer sink, space for dishwasher and American style fridge/freezer, radiator, ceiling light points

Utility Room

6' 9" x 5' (2.06m x 1.52m)
uPVC door with double glazed insert panel leading to garden, built in shelves and space for washing machine and tumble dryer, radiator, ceiling light point

Downstairs Cloakroom

uPVC opaque double glazed window to side aspect, low level WC. corner hand wash basin, tiled walls, wall light point

Landing

Loft hatch providing access to loft (which is boarded with lighting), ceiling light point, doors leading to subsequent rooms

Master Bedroom

11' 11" x 9' 11" (3.63m x 3.02m)
uPVC double glazed window to rear aspect, built in wardrobes, radiator, ceiling light point

Bedroom Two

13' 5" max x 12' max (4.09m max x 3.66m max)
uPVC double glazed window to front aspect with views to hills beyond, radiator, ceiling light point

Bedroom Three

10' max x 9' max (3.05m max x 2.74m max)
uPVC double glazed window to front aspect with views to hills beyond, storage space above stairs, radiator, ceiling light point

Bathroom

uPVC opaque double glazed window to side aspect, panel corner bath with shower over and tiled surround, low level WC, hand wash basin, tiled walls, radiator, ceiling light point

Rear Garden

Enclosed rear garden, predominantly laid to lawn, patio area, feature gravel area towards end of garden with terraced area with solar lighting, two storage sheds, gate providing access to driveway

Driveway & Garage

Paved driveway leading to garage with ample parking and feature gravel area





view this property online fox-and-sons.co.uk/Property/AXM101507



welcome to

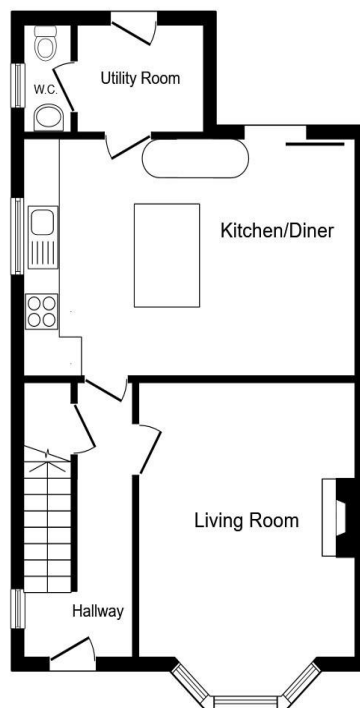
Grantlea Gamberlake, Axminster

- SEMI-DETACHED HOME
- THREE BEDROOMS
- COUNCIL TAX BAND C
- SPACIOUS KITCHEN/DINING ROOM
- GOOD SIZED REAR GARDEN

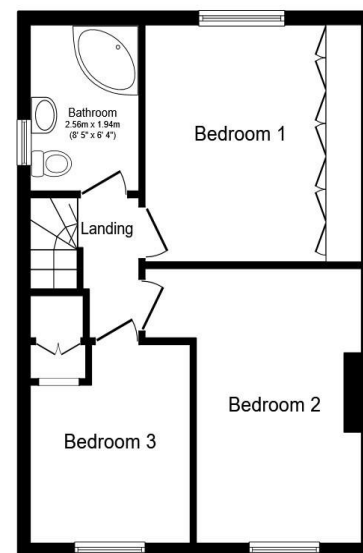
Tenure: Freehold EPC Rating: D

Council Tax Band: C

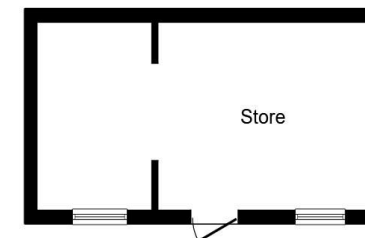
£330,000



Ground Floor



First Floor



Outbuilding

Total floor area 112.0 m² (1,206 sq.ft.) approx

This floor plan is for illustrative purposes only. It is not drawn to scale. Any measurements, floor areas (including any total floor area), openings and orientation are approximate. No details are guaranteed, they cannot be relied upon for any purpose and they do not form part of any agreement. No liability is taken for any error, omission or misstatement. A party must rely upon its own inspection(s). Powered by www.propertybox.io



view this property online fox-and-sons.co.uk/Property/AXM101507



Property Ref:
AXM101507 - 0005

1. MONEY LAUNDERING REGULATIONS Intending purchasers will be asked to produce identification documentation at a later stage and we would ask for your co-operation in order that there is no delay in agreeing the sale. 2. These particulars do not constitute part or all of an offer or contract. 3. The measurements indicated are supplied for guidance only and as such must be considered incorrect. Potential buyers are advised to recheck measurements before committing to any expense. 4. We have not tested any apparatus, equipment, fixtures or services and it is in the buyers interest to check the working condition of any appliances. 5. Where an EPC, or a Home Report (Scotland only) is held for this property, it is available for inspection at the branch by appointment. If you require a printed version of a Home Report, you will need to pay a reasonable production charge reflecting printing and other costs. 6. We are not able to offer an opinion either written or verbal on the content of these reports and this must be obtained from your legal representative. 7. Whilst we take care in preparing these reports, a buyer should ensure that his/her legal representative confirms as soon as possible all matters relating to title including the extent and boundaries of the property and other important matters before exchange of contracts.

Fox & Sons is a trading name of Sequence (UK) Limited which is registered in England and Wales under company number 4268443, Registered Office is Cumbria House, 16-20 Hockliffe Street, Leighton Buzzard, Bedfordshire, LU7 1GN. VAT Registration Number is 500 2481 05.



01297 32323



axminster@fox-and-sons.co.uk



West Street, AXMINSTER, Devon, EX13 5NU



fox-and-sons.co.uk