

FLETCHERS

ESTATE AGENTS



Duke Road, W4

£1,500,000

An attractive four bedroom family home on the sought after Duke Road, with an additional office room, two bathrooms and West facing garden.



The ground floor has a wide, bright double reception room leading through to the family sized kitchen diner, and a WC. There are two large double bedrooms on the first floor, alongside an office. Upstairs, the loft has been extended with two further double bedrooms.

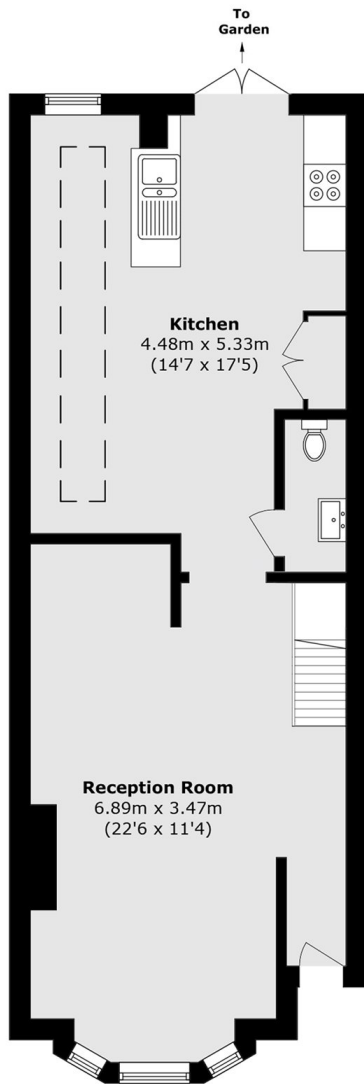
Duke Road is within the popular Glebe Estate, ideally located with Chiswick High Road at the end of the road, and within walking of Turnham Green Station (0.5 miles). A great selection of boutiques, cafés and restaurants are on the doorstep.

- Four Bedrooms • Additional Office • Two Bathrooms •
- Ground Floor WC • West Facing Garden • No Onward Chain •

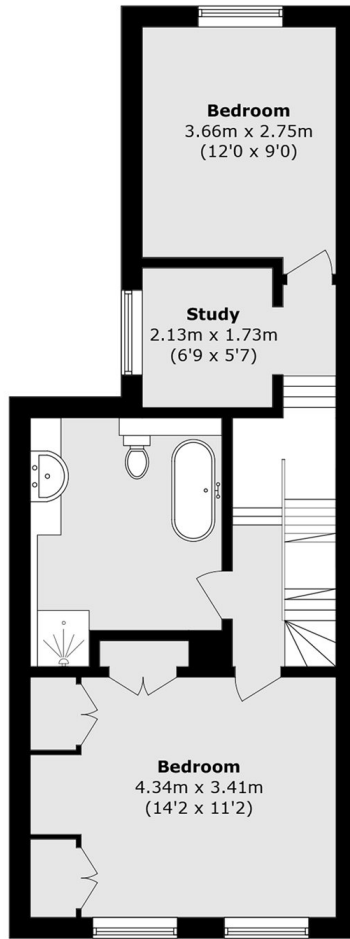


FLETCHERS

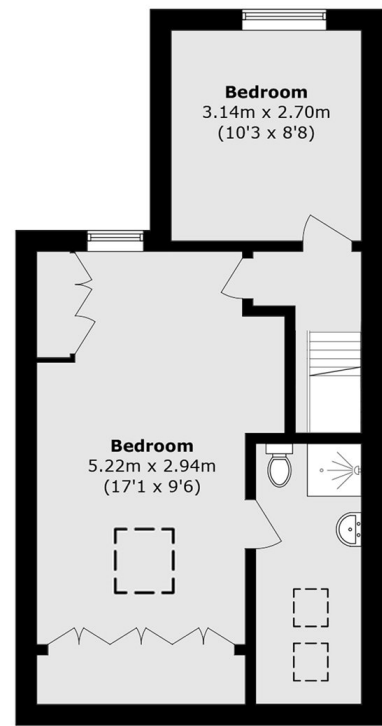
ESTATE AGENTS



Ground Floor



First Floor



Second Floor

Total area (approx.): 139.6 sq. m (1502.6 sq. ft)

Fletchers Chiswick Turnham Green Sales
58 Turnham Green Terrace
London
W4 1QP
020 8987 3000
chiswicksales@fletcherestates.com

Energy Rating: C We aim to make our particulars both accurate and reliable. However they are not guaranteed; nor do they form part of an offer or contract. If you require clarification on any points then please contact us, especially if you're traveling some distance to view. Please note that appliances and heating systems have not been tested and therefore no warranties can be given as to their good working order