

# FLETCHERS

ESTATE AGENTS



## Percy Road, W12

£450,000

\*\*\*OFFERS IN EXCESS OF\*\*\* A well-appointed, bright, Victorian conversion flat situated in the heart of Askew Village. Located on the first floor, this excellent property comprises of an open-plan kitchen/reception room with an attractive feature bay-window and benefitting from plenty of natural light, a large master bedroom complete with built-in storage to the rear of the property overlooking the gardens below and a second double bedroom also benefitting from built-in storage.

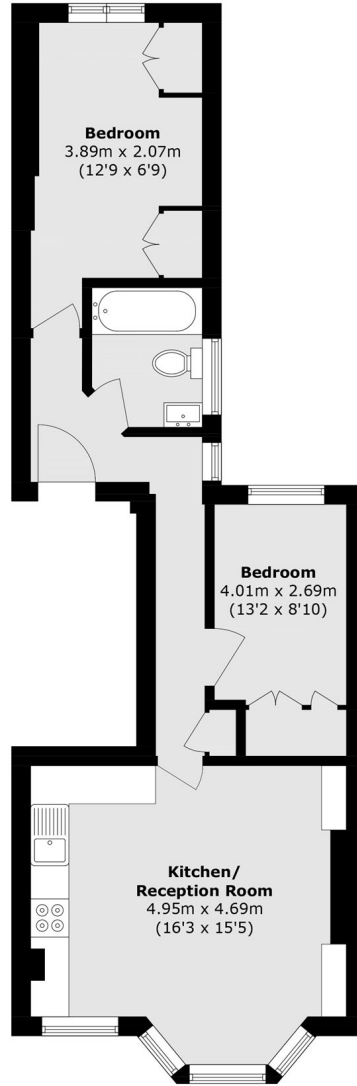
An excellent property for first time buyers & investors alike, it is offered to the market with a long lease and no onward chain.

Percy Road is a quiet, residential street Askew Village and positioned well for the green space of Ravenscourt Park. Located just off Askew Road, it is positioned ideally for its array of local shops, bars and restaurants. The award winning ginger pig butchers, The Eagle with its excellent pub garden and Cafe Louche are local favourites. Ravenscourt Park (District line) as well as Goldhawk Road (Hammersmith & City line & Circle line) as well as Shepherds Bush (Central line) are all nearby offering excellent connections into town. The flat is also ideally located for the array of shops, restaurants and amenities of Westfield and those surrounding the development at the BBC Television Centre.

• Two Double Bedrooms • Open-Plan Kitchen/Reception • Victorian Conversion • Askew Village • Long Lease • Excellent Location •

# FLETCHERS

ESTATE AGENTS



Total area (approx.): 52.8 sq. m (568.3 sq. ft)

Fletchers Brook Green Sales  
144 Shepherds Bush Road, Hammersmith, London, W6 7PB  
020 7603 1415  
[brookgreensales@fletcherestates.com](mailto:brookgreensales@fletcherestates.com)

Energy Rating: D. We aim to make our particulars both accurate and reliable. However they are not guaranteed; nor do they form part of an offer or contract. If you require clarification on any points then please contact us, especially if you're traveling some distance to view. Please note that appliances and heating systems have not been tested and therefore no warranties can be given as to their good working order.