



Clydach Avenue, £150,000

- Semi Detached
- Two Bedrooms
- No Chain
- Driveway To Front
- Enclosed Rear and Back Gardens
- Utility Area
- EPC Rating: C



🛏 2 🚿 1 🛋 1



About the property

Originally built as a three-bedroom property and thoughtfully reconfigured into a spacious two-bedroom home to accommodate a large upstairs bathroom, the layout could easily be adapted back to three bedrooms depending on a buyer's needs. This well-presented two-bedroom semi-detached home is offered to the market with no onward chain, making it an ideal choice for first-time buyers or those looking for a smooth and speedy move.

The ground floor features two reception rooms, providing flexible living and dining space, with double doors opening onto the front garden, allowing plenty of natural light to flow through. A convenient utility area sits just off the reception rooms, leading through to a well-appointed kitchen with good storage and workspace.

Upstairs, the property offers two generous double bedrooms along with a large family bathroom, creating a comfortable layout well suited to couples, young families, or those needing a guest room or home office.

The home is in good overall condition, ready to move into while still offering potential to personalise. One of the standout benefits is the off-road parking to the front, a valuable feature in this popular area.



Accommodation

Agents Note

The sale of this property is subject to receipt of Grant of Probate. Please obtain an update from the branch with regards to the potential timeframes involved.

Living / Dining Room

19' 11" x 13' 9" (6.07m x 4.19m)

Kitchen / Dining Room

19' 11" x 13' 9" (6.07m x 4.19m)

Utility

11' 2" x 4' 11" (3.40m x 1.50m)

Bathroom

14' 1" x 9' 5" (4.29m x 2.87m)

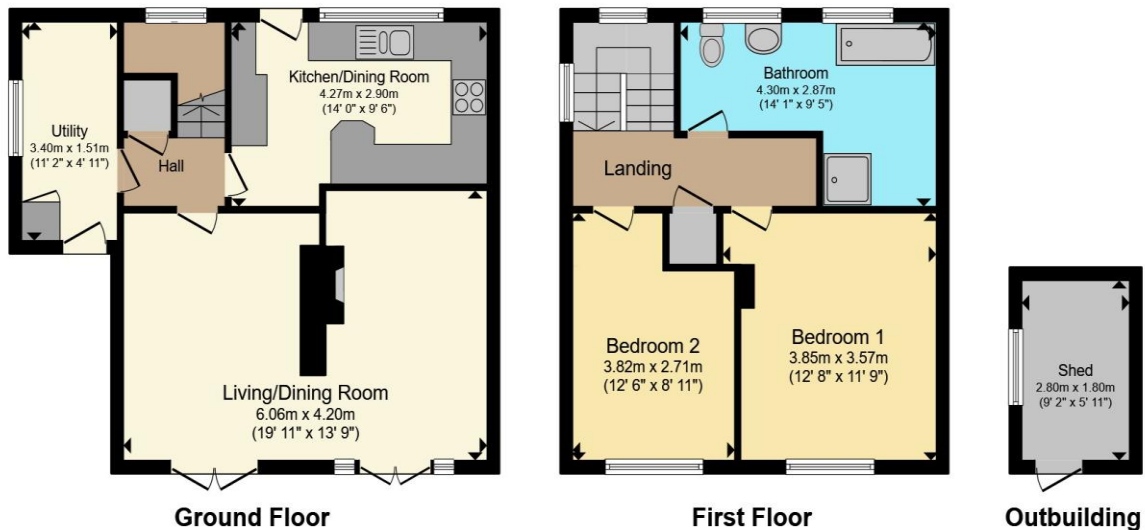
Bedroom Two

12' 6" x 8' 11" (3.81m x 2.72m)

01495360922

ebbwwale@peteralan.co.uk

Floorplan



Total floor area 93.6 m² (1,008 sq.ft.) approx

This floor plan is for illustrative purposes only. It is not drawn to scale. Any measurements, floor areas (including any total floor area), openings and orientation are approximate. No details are guaranteed, they cannot be relied upon for any purpose and they do not form part of any agreement. No liability is taken for any error, omission or misstatement. A party must rely upon its own inspection(s). Powered by www.propertybox.io

pa peter
alan

Important Information

Note while we endeavour to make our sales details accurate and reliable, if there is any point which is of particular interest to you, please contact the office and we will be pleased to confirm the position for you. We have not personally tested any apparatus, equipment, fixtures, fittings or services and cannot verify they are in working order or fit for their purposes. Nothing in these particulars is intended to indicate that carpets or curtains, furnishings or fittings, electrical goods (whether wired or not), Gas fires or light fittings or any other fixtures not expressly included form part of the property offered for sale. This computer generated Floorplan, if applicable, is intended as a general guide to the layout and design of the property. It is not to scale and should not be relied upon for dimensions. Tenure: We cannot confirm the tenure of the property as we have not had access to the legal documents. The buyer is advised to obtain verification from their solicitor or surveyor.

Peter Alan Limited is registered in England and Wales under company number 2073153, Registered Office is Cumbria House, 16-20 Hockliffe Street, Leighton Buzzard, Bedfordshire, LU7 1GN. VAT Registration Number is 500 2481 05. For activities relating to regulated mortgages and non-investment insurance contracts, Peter Alan Limited is an appointed representative of Connells Limited which is authorised and regulated by the Financial Conduct Authority. Connells Limited's Financial Services Register number is 302221. Most buy-to-let

pa peter
alan