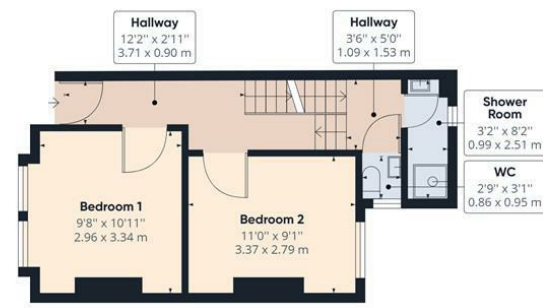


Floor -1 Building 1



Ground Floor Building 1



Floor 1 Building 1

Approximate total area⁽¹⁾
946.29 ft²
87.91 m²

(1) Excluding balconies and terraces

While every attempt has been made to ensure accuracy, all measurements are approximate, not to scale. This floor plan is for illustrative purposes only.

GIRAFFE360



Total Area Approx sq ft

5 Coronation Street, Brighton, BN2 3AQ

To view, contact John Hilton:
52 High Street, Rottingdean, BN2 7HF
132-135 Lewes Road, Brighton, BN2 3LG
01273 608151 or sales@johnhiltons.co.uk

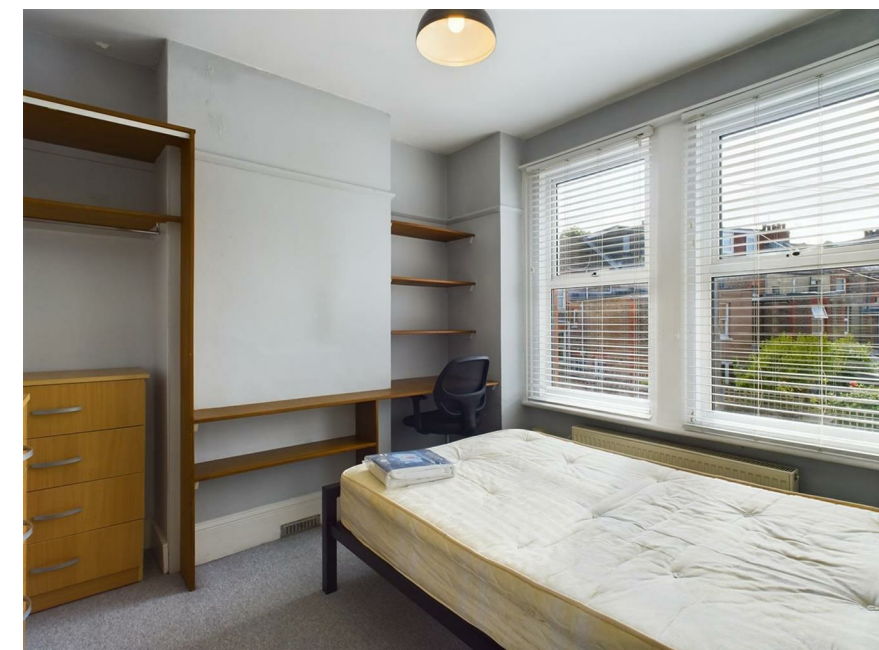
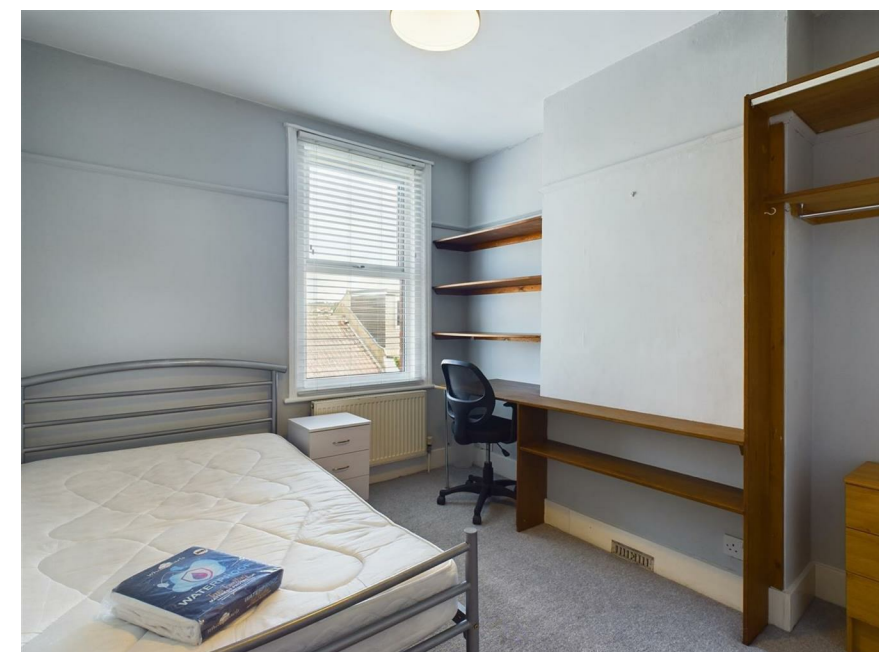
PCM £3,275 PCM

5 Coronation Street, Brighton, BN2

3AQ

- 5 double bedroom STUDENT PROPERTY (students only)
- £151.15 per person per week / £655 per person per month
- Available 16 September 2026
- Modern neutral décor
- Furnished
- Separate living room and kitchen
- 2 Shower Rooms
- Garden
- Popular location
- Council tax band C
- 11-month tenancy

- A holding deposit of £755.77 will be required to secure the Property, equivalent to 1 week's rent. Once referencing is complete, the Holding Deposit will go toward the first month's rent.
- The above details are intended for information purposes only and do not constitute an offer or form part of a contract. A tenancy will be granted subject to referencing and contracts.
- Please note that rent is shown per person per week based on 52 weeks of the year. The rental amount as advertised is due monthly.
- All tenants must be full-time students during the term of this tenancy.



Energy Efficiency Rating		Current	Potential
Very energy efficient - lower running costs			
(92 plus) A			
(81-91) B			
(69-80) C		68	83
(55-68) D			
(39-54) E			
(21-38) F			
(1-20) G			
Not energy efficient - higher running costs			
England & Wales		EU Directive 2002/91/EC	

Council Tax Band: **C**